

ATLANTIC CITY, NEW JERSEY

HI-ILS or LOC RWY 13

LOC/DME I-PVO 109.1 Chan 28	APCH CRS 128°	Rwy Idg 10,000 TDZE 75 Arprt Elev 75
---	-------------------------	---

JAL-669 [USAF]

ATLANTIC CITY INTL (KACY)

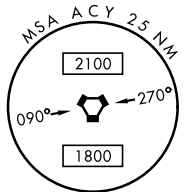
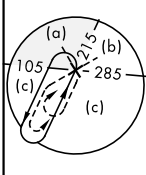
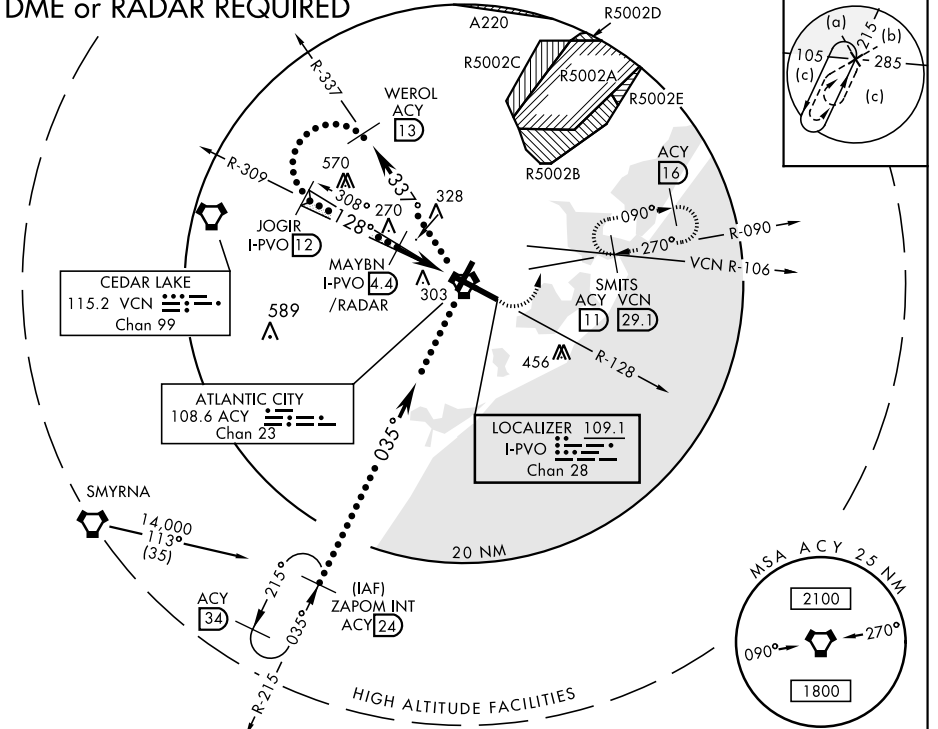
▼ * When ALS inop, increase RVR to 40 and vis to 3/4 mile.
▲ ** When ALS inop, increase RVR to 50 and vis to 1 mile.

MALSR (A5)

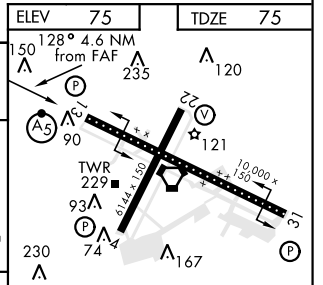
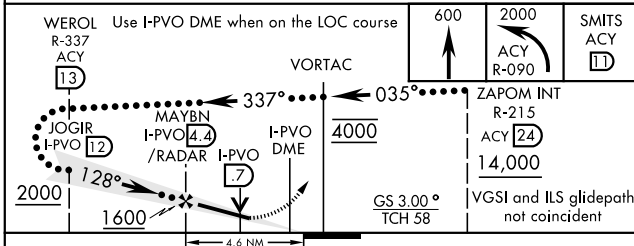
MISSED APPROACH: Climb to 600 then climbing left turn to 2000 via ACY R-090 to SMITS INT/ACY 11 DME and hold; or when directed by ATC, climb to 600 then climbing left turn to 2000 via heading 076° and VCN R-106 to SMITS INT/VCN 29.1 DME and hold E, RT, hdg 286° inbound.

ATIS 125.725 316.15	ATLANTIC CITY APP CON 130°-309° 124.6 327.125 310°-129° 134.25 292.2	ATLANTIC CITY TOWER 120.3 239.0	GND CON 121.9 284.6	CLNC DEL 127.85 353.775	ASR
-------------------------------	--	---	-------------------------------	-----------------------------------	-----

DME or RADAR REQUIRED



EMERG SAFE ALT 100 NM 4200



CATEGORY	C	D	E
S-ILS 13 *	275/18 200	(200-1/2)	275/24 200 (200-1/2)
S-LOC 13 **	420/24 345 (400-1/2)	420/40 345	(400-3/4)
CIRCLING	540-1 1/2 465 (500-1 1/2)	640-2 565 (600-2)	760-2 1/2 685 (700-2 1/2)

REIL Rwy 31 HIRL Rwy 4-22 and 13-31 TDZL/CL Rwy 13	ELEV 75 128° 4.6 NM from FAF	TDZE 75			
FAF to MAP 4.6 NM					
Knots	120	140	160	180	200
Min:Sec	2:18	1:58	1:43	1:32	1:23

ATLANTIC CITY, NEW JERSEY

39°27'N-74°35'W

ATLANTIC CITY INTL (KACY)

Amdt 4C 04FEB16

HI-ILS or LOC RWY 13

NE-2, 28 MAR 2019 to 25 APR 2019

NE-2, 28 MAR 2019 to 25 APR 2019