

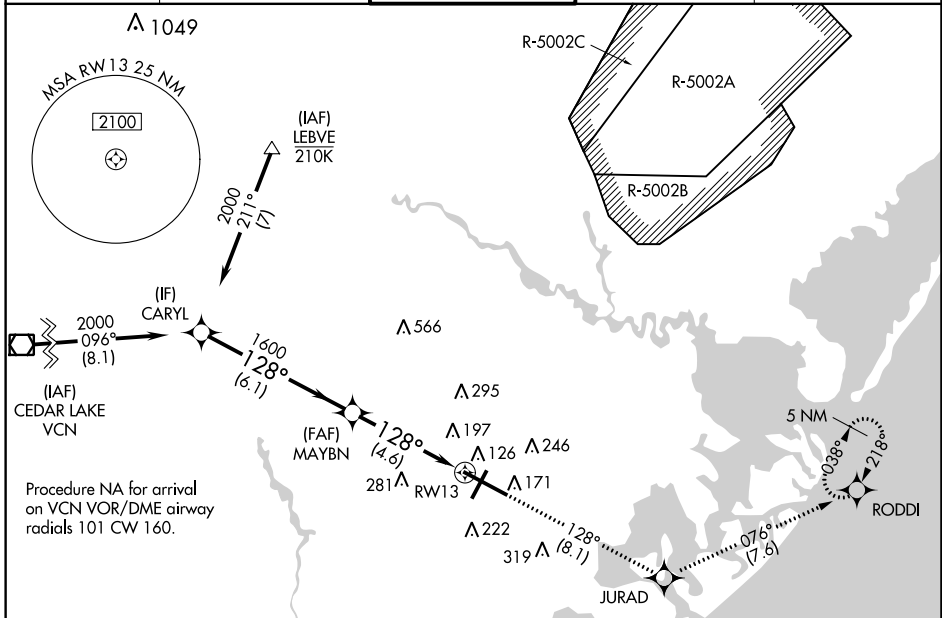
APP CRS	Rwy ldg	10000
128°	TDZE	75
	Apt Elev	75

RNAV (RNP) Z RWY 13

ATLANTIC CITY INTL (ACY)

NA ASR	For uncompensated Baro-VNAV systems, procedure NA below -13°C (9°F) or above 54°C (130°F). GPS required. For inop ALS, increase RNP 0.30 all Cats visibility to RVR 6000.	MALSR 	MISSED APPROACH: Climb to 2000 on track 128° to JURAD and on track 076° to RODDI and hold.
-----------	--	-----------	--

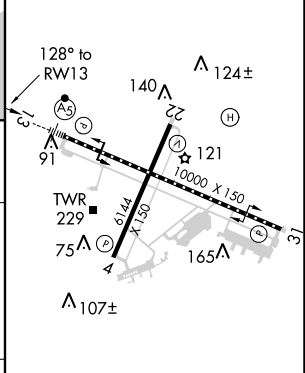
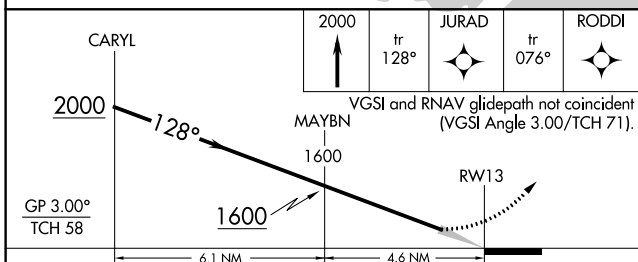
ATIS	ATLANTIC CITY APP CON	ATLANTIC CITY TOWER	GND CON	CLNC DEL
125.725 316.15	124.6 327.125	120.3 239.0	121.9 284.6	127.85 353.775



NE-2, 28 MAR 2019 to 25 APR 2019

NE-2, 28 MAR 2019 to 25 APR 2019

ELEV	75	D	TDZE	75
------	----	----------	------	----



CATEGORY	A	B	C	D
RNP 0.30 DA		442/40	367 (400-¾)	

AUTHORIZATION REQUIRED

TDZ/CL Rwy 13
HIRL Rwy 4-22 and 13-31
REIL Rwy 31