

APP CRS	Rwy ldg	10000
308°	TDZE	63
	Apt Elev	75

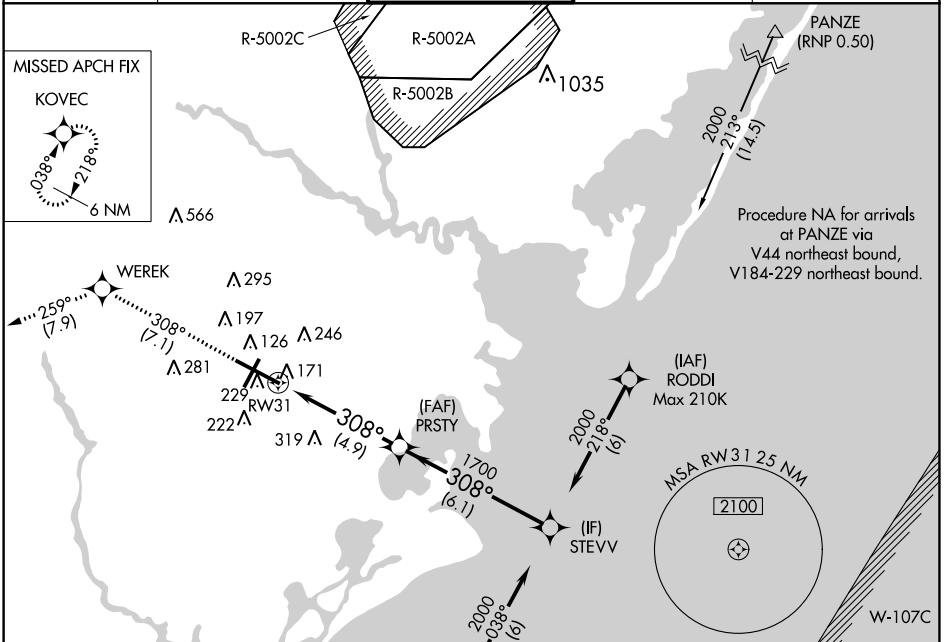
RNAV (RNP) Z RWY 31

ATLANTIC CITY INTL (ACY)

ASR GPS Required. Procedure NA at night.
For uncompensated Baro-VNAV systems, procedure NA below -13°C (8°F) or above 54°C (130°F).

MISSED APPROACH: Climb to 2000 on track 308° to WEREK on track 259° to KOVEC and hold.

ATIS	ATLANTIC CITY APP CON	ATLANTIC CITY TOWER	GND CON	CLNC DEL
125.725 316.15	124.6 327.125	120.3 239.0	121.9 284.6	127.85 353.775

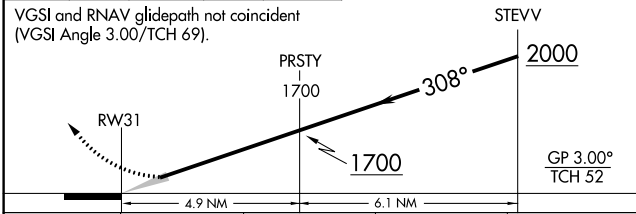


NE-2, 28 MAR 2019 to 25 APR 2019

NE-2, 28 MAR 2019 to 25 APR 2019

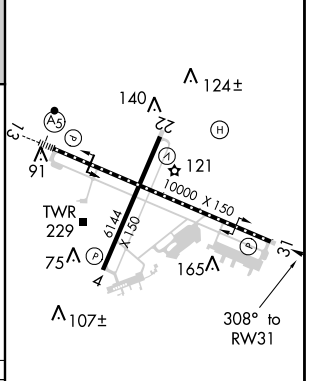
2000	↑	tr 308°	WEREK	↑	tr 259°	KOVEC
------	---	---------	-------	---	---------	-------

VGSI and RNAV glidepath not coincident (VGSI Angle 3.00/TCH 69).



CATEGORY	A	B	C	D
RNP 0.30 DA		408/60	345 (400-1¼)	

ELEV 75	D	TDZE 63
---------	----------	---------



AUTHORIZATION REQUIRED

TDZ/CL Rwy 13
HIRL Rwy 4-22 and 13-31
REIL Rwy 31