

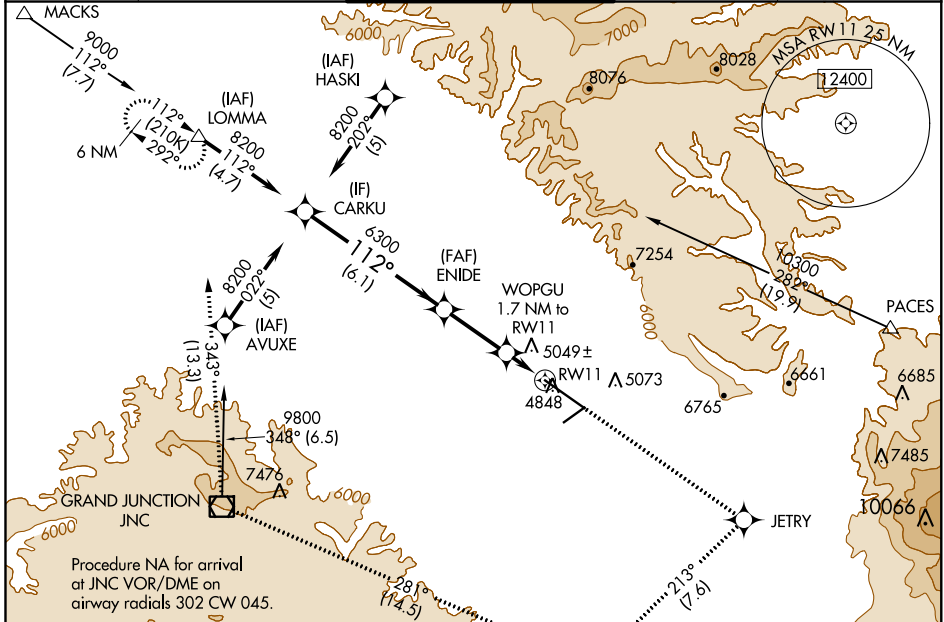
WAAS CH <b>97514</b> <b>W11A</b>	APP CRS <b>112°</b>	Rwy Idg TDZE Apt Elev	<b>10503</b> <b>4833</b> <b>4858</b>
--	------------------------	-----------------------------	--

# RNAV (GPS) Y RWY 11

GRAND JUNCTION RGNL (GJT)

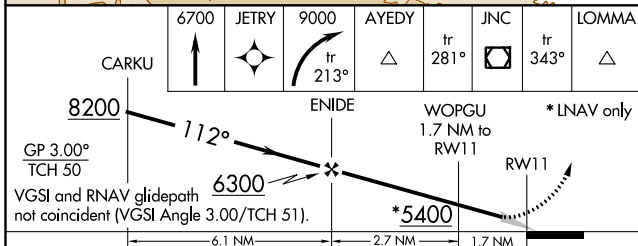
RNP APCH.	MALSRS	MISSED APPROACH: Climb to 6700 direct JETRY then climbing right turn to 9000 on track 213° to AYEDY and on track 281° to JNC VOR/DME and on track 343° to LOMMA and hold.
<p>▼ For uncompensated Baro-VNAV systems, LNAV/VNAV NA below -24°C (-11°F) or above 39°C (102°F).</p> <p>▲ When local altimeter setting not received, procedure NA.</p> <p># RVR 1800 authorized with use of FD or AP or HUD to DA.</p>		

ATIS <b>118.55</b>	DENVER APP CON * <b>119.7 317.4</b>	GRAND JUNCTION TOWER * <b>118.1 (CTAF) 0 257.8</b>	GND CON <b>121.7 257.8</b>	UNICOM <b>122.95</b>
-----------------------	--	---	-------------------------------	-------------------------

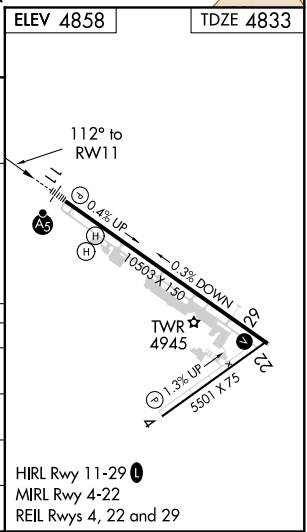


Procedure NA for arrival at JNC VOR/DME on airway radials 302 CW 045.

ELEV 4858	TDZE 4833
-----------	-----------



CATEGORY	A	B	C	D
LPV DA #	5033/24		200 (200-½)	
LNAV/VNAV DA	5492-1¾		659 (700-1¾)	
LNAV MDA	5300/24 467 (500-½)		5300/50 467 (500-1)	
CIRCLING	5360-1 502 (600-1)	5420-1 562 (600-1)	5440-1½ 582 (600-1½)	5540-2¼ 682 (700-2¼)



SW-1, 25 APR 2019 to 23 MAY 2019

SW-1, 25 APR 2019 to 23 MAY 2019