

# LINDZ NINE DEPARTURE

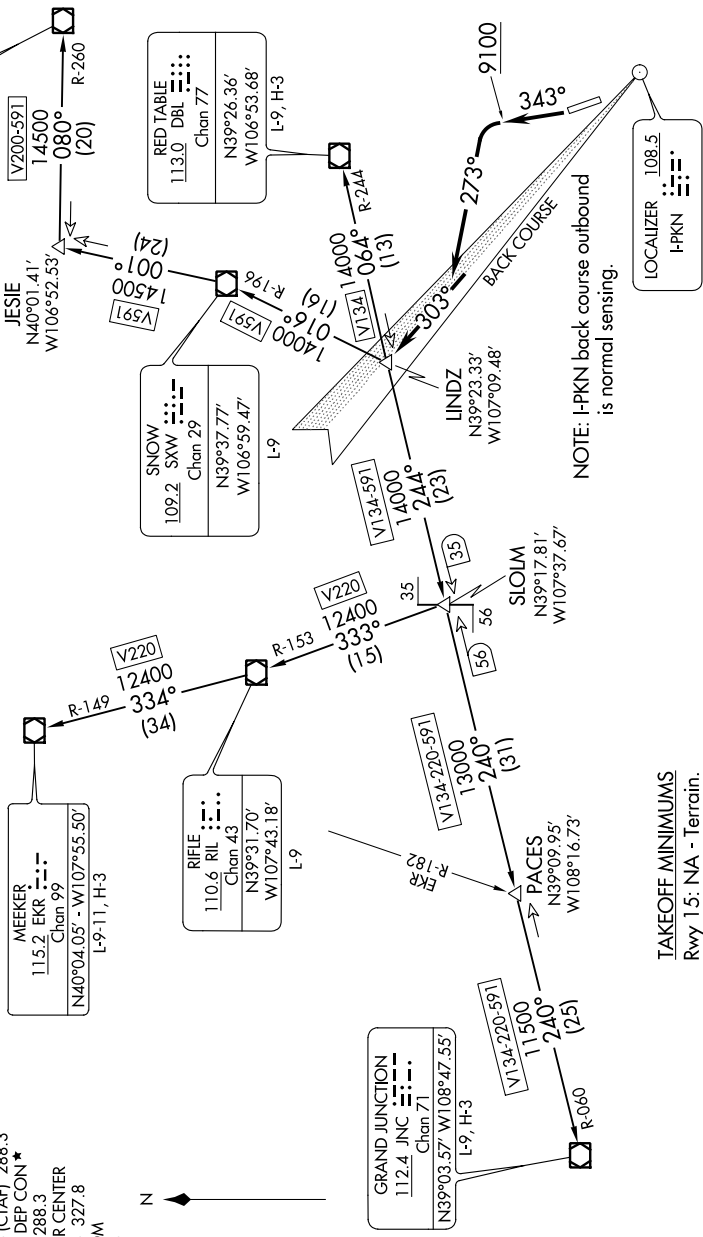
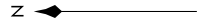
AL-5889 (FAA)

ASPEN, COLORADO

SW-1, 25 APR 2019 to 23 MAY 2019

**TOP ALTITUDE:  
16000**

- ATIS 120.4
- CINC DEL 123.75
- GND CON 121.9
- ASPEN TOWER\* 118.85 (CTAF) 288.3
- ASPEN DEP CON\* 123.8 288.3
- DENVER CENTER 125.35 327.8
- UNICOM 122.95



**TAKEOFF MINIMUMS**  
 Rwy 15: NA - Terrain.  
 Rwy 33: 400-1 with minimum climb of 465' per NM to 10000.

NOTE: Chart not to scale.

(NARRATIVE ON FOLLOWING PAGE)

SW-1, 25 APR 2019 to 23 MAY 2019

# LINDZ NINE DEPARTURE