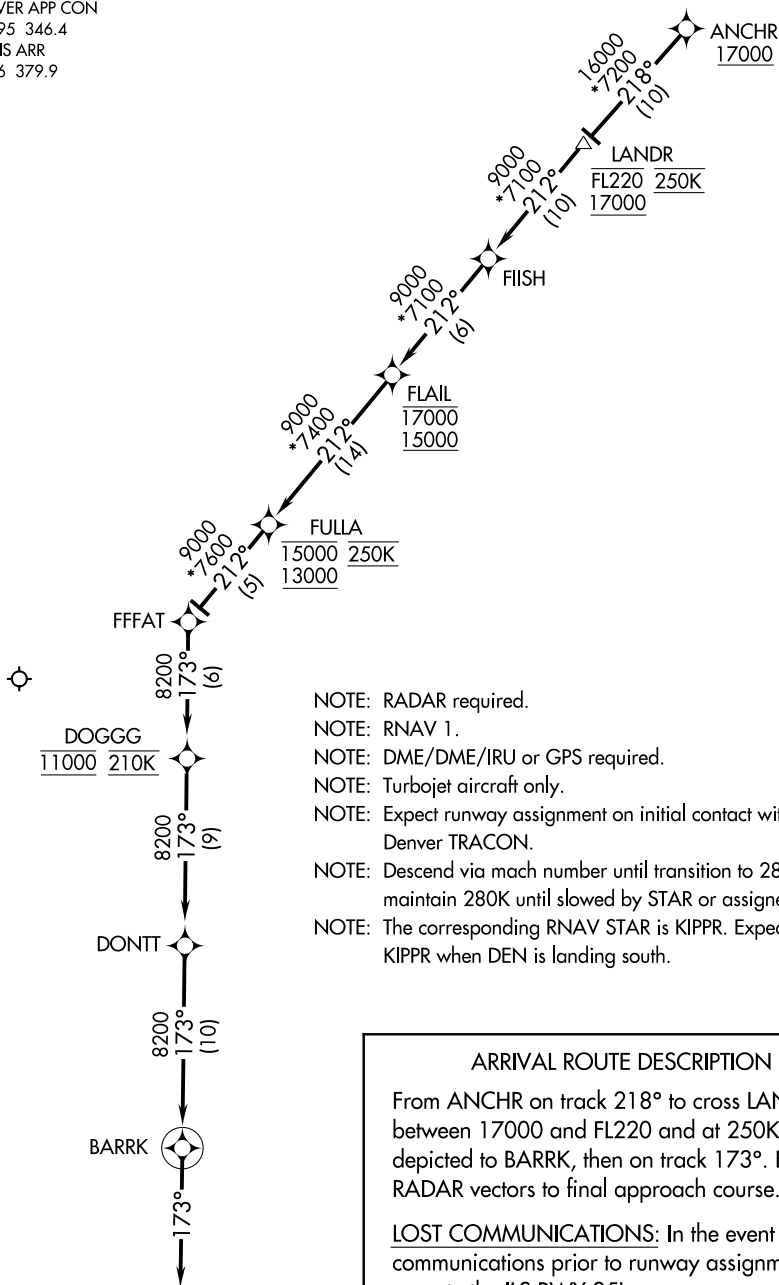


DENVER APP CON
124.95 346.4
D-ATIS ARR
125.6 379.9



ARRIVAL ROUTE DESCRIPTION

From ANCHR on track 218° to cross LANDR between 17000 and FL220 and at 250K, then as depicted to BARRK, then on track 173°. Expect RADAR vectors to final approach course.

LOST COMMUNICATIONS: In the event of lost communications prior to runway assignment, execute the ILS RWY 35L.

NOTE: Chart not to scale.

SW-1, 25 APR 2019 to 23 MAY 2019

SW-1, 25 APR 2019 to 23 MAY 2019