

BAYLR FOUR DEPARTURE (RNAV)

AL-9077 (FAA)

DENVER INTL (DEN)
DENVER, COLORADO

SW-1, 25 APR 2019 to 23 MAY 2019

D-ATIS DEP
134.025
CLNC DEL
118.75
CPDLC
DENVER DEP CON
126.11 360.75

NOTE: DME/DME/IRU or GPS required.

NOTE: RNAV 1.

NOTE: Turboprops only.

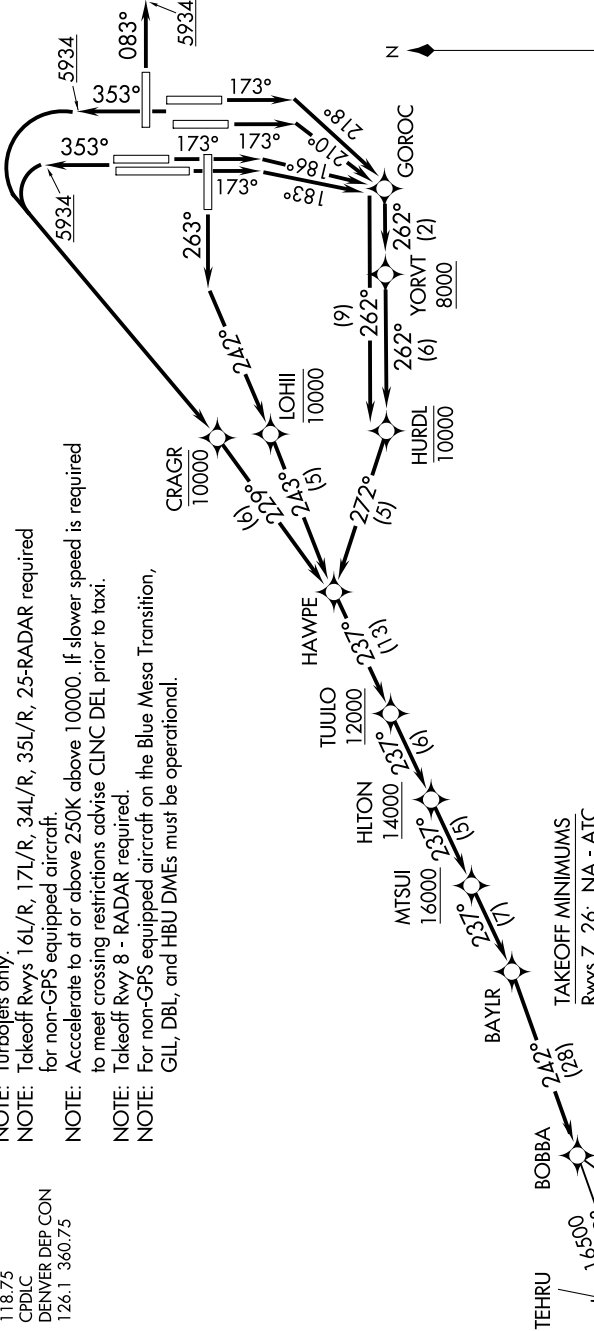
NOTE: Takeoff Rwy's 16L/R, 17L/R, 34L/R, 35L/R, 25-RADAR required for non-GPS equipped aircraft.

NOTE: Accelerate to or above 250K above 10000. If slower speed is required to meet crossing restrictions advise CLNC DEL prior to taxi.

NOTE: Takeoff Rwy 8 - RADAR required.

NOTE: For non-GPS equipped aircraft on the Blue Mesa Transition, GLL, DBL, and HBU DMEs must be operational.

TOP ALTITUDE:
FL230



TAKEOFF MINIMUMS
Rwys 7, 26: NA - ATC.
Rwy 8: Standard with minimum climb of 400' per NM to 5934.
Rwy 16L: Standard with minimum climb of 425' per NM to 5934, then minimum climb of 265' per NM to 16500.
Rwy 16R: Standard with minimum climb of 420' per NM to 6400, then minimum climb of 265' per NM to 16500.
Rwy 17L: Standard with minimum climb of 450' per NM to 7000, then minimum climb of 265' per NM to 16500.
Rwy 17R: Standard with minimum climb of 460' per NM to 5934, then minimum climb of 265' per NM to 16500.
Rwy 25: Standard with minimum climb of 410' per NM to 5934, then minimum climb of 265' per NM to 16500.
Rwys 34L/R: Standard with minimum climb of 400' per NM to 5934, then minimum climb of 265' per NM to 16500.
Rwys 35L/R: Standard with minimum climb of 400' per NM to 5934, then minimum climb of 260' per NM to 16500.

(NARRATIVE ON FOLLOWING PAGE)

NOTE: Chart not to scale.