

LOC/DME I-OUF <b>111.1</b> Chan <b>48</b>	APP CRS <b>353°</b>	Rwy Idg <b>12000</b> TDZE <b>5354</b> Apt Elev <b>5434</b>
---	------------------------	--

# ILS RWY 34R (SA CAT I)

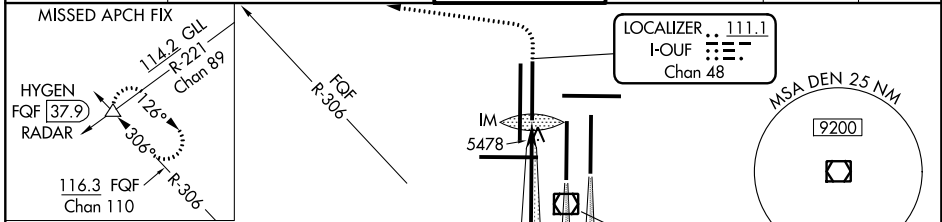
DENVER INTL (DEN)

Requires specific OPSEC, MSPEC or LOA approval and use of HUD to DH. Simultaneous approach authorized with Rwy 35L/R.

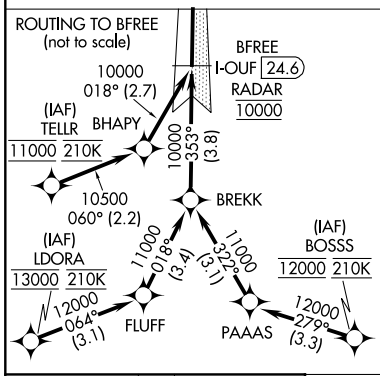
ALSIF-2

MISSED APPROACH: Climb to 5800 then climbing left turn to 10000 on heading 270° and on FQF VORTAC R-306 to HYGEN/FQF 37.9 DME/RADAR and hold.

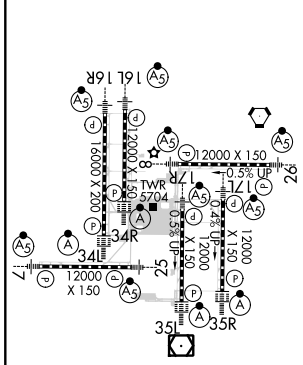
D-ATIS ARR <b>125.6 379.9</b> DEP <b>134.025</b>	DENVER APP CON <b>119.3 307.3 120.35 379.3</b> (NORTH) (SOUTH)	DENVER TOWER <b>135.3 351.95</b>	GND CON <b>127.5 379.175</b>	CLNC DEL <b>118.75</b>	CPDLC
--	---	-------------------------------------	---------------------------------	---------------------------	-------



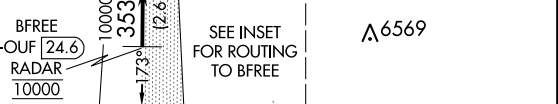
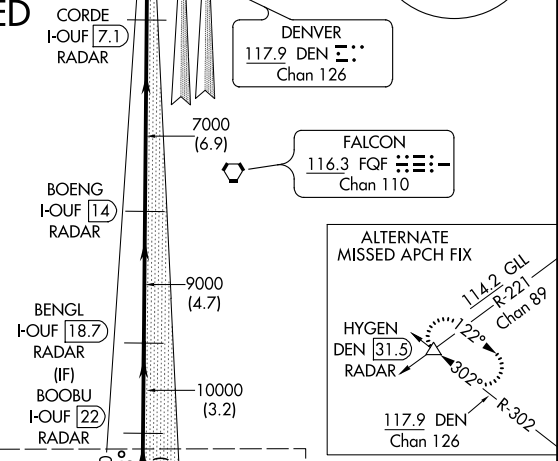
## RADAR or GPS REQUIRED



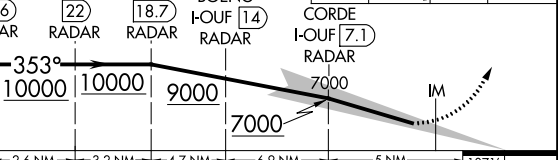
ELEV 5434	<b>D</b>	TDZE 5354
-----------	----------	-----------



HIRL all Rwys  
TDZ/CL Rwys 7, 16L, 16R, 17R, 26, 34L, 34R, 35L, 35R



BFREE I-OUF 24.6 RADAR	BOOBU I-OUF 22 RADAR	BENGL I-OUF 18.7 RADAR (IF)	BOENG I-OUF 14 RADAR	CORDE I-OUF 7.1 RADAR	FQF R-306	HYGEN △
------------------------	----------------------	-----------------------------	----------------------	-----------------------	-----------	---------



CATEGORY A	B	C	D
S-ILS 34R	RA 175/14 150 DA 5504		

**SA CATEGORY I ILS - SPECIAL AIRCREW & AIRCRAFT CERTIFICATION REQUIRED**

SW-1, 25 APR 2019 to 23 MAY 2019

SW-1, 25 APR 2019 to 23 MAY 2019