

LOC/DME I-AQD <b>108.5</b> Chan <b>22</b>	APP CRS <b>353°</b>	Rwy Idg <b>12000</b> TDZE <b>5434</b> Apt Elev <b>5434</b>
---	------------------------	--

# ILS RWY 35L (CAT II & III)

DENVER INTL (DEN)

RNAV 1-GPS or RADAR required for procedure entry.

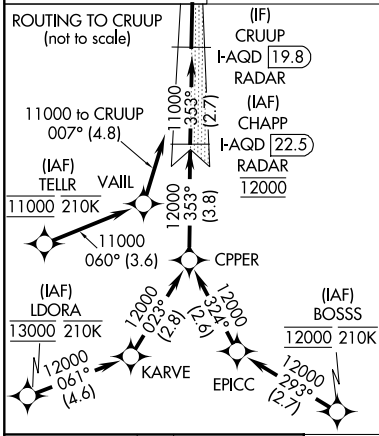
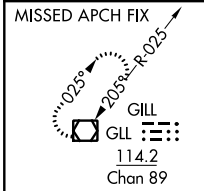
ALSF-2

MISSED APPROACH: Climb to 10000 then right turn direct GLL VOR/DME and hold.

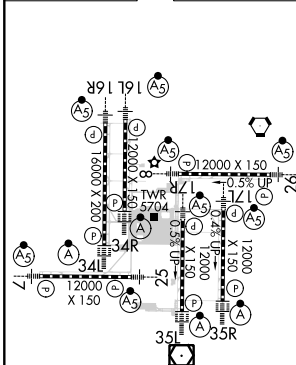
Simultaneous approach authorized. CAT II: RVR 1000 authorized with specific OPSPEC, MSPEC, or LOA approval and use of autoland or HUD to touchdown.



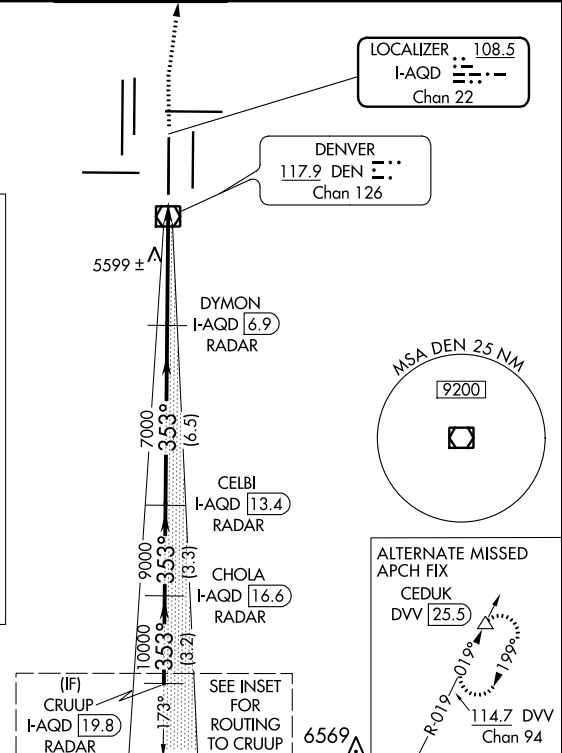
D-ATIS ARR <b>125.6 379.9</b> DEP <b>134.025</b>	DENVER APP CON <b>119.3 307.3 120.35 379.3</b> (NORTH) (SOUTH)	DENVER TOWER <b>133.3 322.45</b>	GND CON <b>121.85 377.1</b>	CLNC DEL <b>118.75</b>	CPDLC
--	---	-------------------------------------	--------------------------------	---------------------------	-------



ELEV 5434 D TDZE 5434

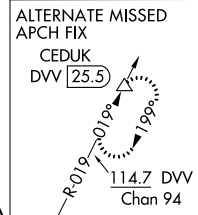
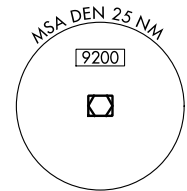


HIRL all Rwys  
TDZ/CL Rwys 7, 16L, 16R, 17R, 26, 34L, 34R, 35L, 35R

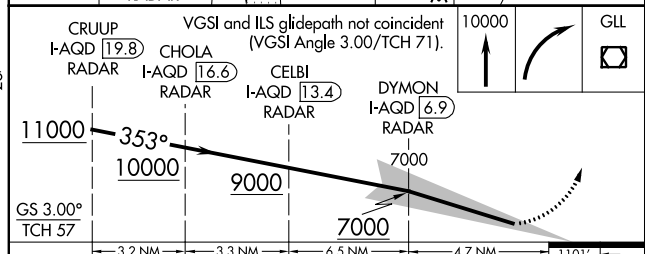


LOCALIZER 108.5  
I-AQD  
Chan 22

DENVER 117.9 DEN  
Chan 126



(IF) CRUUP I-AQD 19.8 RADAR  
SEE INSET FOR ROUTING TO CRUUP  
6569 A



CATEGORY	A	B	C	D
S-ILS 35L	CAT II RA 115/12 100 DA 5534			
S-ILS 35L	CAT III RVR 03			

## CATEGORY II & III ILS - SPECIAL AIRCREW & AIRCRAFT CERTIFICATION REQUIRED

SW-1, 25 APR 2019 to 23 MAY 2019

SW-1, 25 APR 2019 to 23 MAY 2019