

LOC/DME I-ACX 108.5 Chan 22	APP CRS 173°	Rwy Idg TDZE Apt Elev	12000 5392 5434
---	------------------------	-----------------------------	--

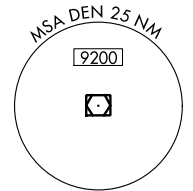
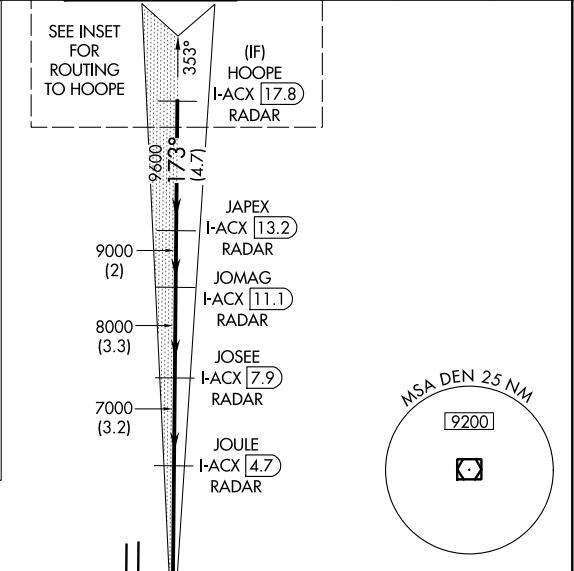
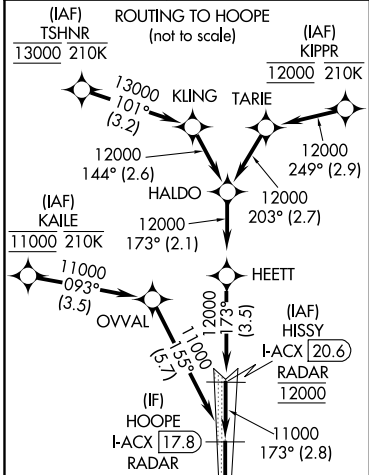
ILS or LOC RWY 17R

DENVER INTL (DEN)

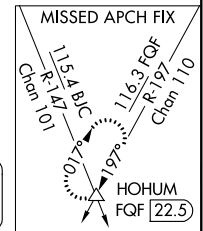
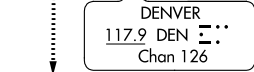
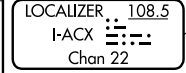
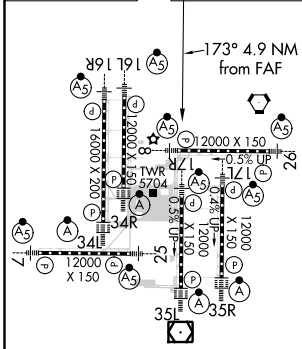
DME or RADAR required for LOC only.
RNAV 1-GPS or RADAR required for procedure entry.
Simultaneous approach authorized. For inop ALS, increase S-17R LOC Cat C/D visibility to RVR 5500.

MALSR
MISSED APPROACH: Climb to 10000 on heading 173° and on FQF VORTAC R-197 to HOHUM INT/ FQF 22.5 DME and hold.

D-ATIS ARR 125.6 379.9 DEP 134.025	DENVER APP CON 119.3 307.3 (NORTH) 120.35 379.3 (SOUTH)	DENVER TOWER 133.3 322.45	GND CON 121.85 377.1	CLNC DEL 118.75	CPDLC
--	---	-------------------------------------	--------------------------------	---------------------------	-------



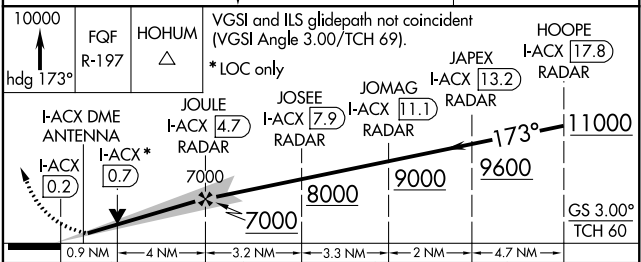
A5824	ELEV 5434	D	TDZE 5392
--------------	------------------	----------	------------------



TDZ/CL Rwyts 7, 16L, 16R, 17R, 26, 34L, 34R, 35L, 35R
HIRL all Rwyts

FAF to MAP 4.9 NM

Knots	60	90	120	150	180
Min:Sec	4:54	3:16	2:27	1:58	1:38



CATEGORY	A	B	C	D
S-ILS 17R	5592/18 200 (200-1/2)			
S-LOC 17R	5720/24	328 (300-1/2)	5720/30	328 (300-5/8)

SW-1, 25 APR 2019 to 23 MAY 2019

SW-1, 25 APR 2019 to 23 MAY 2019