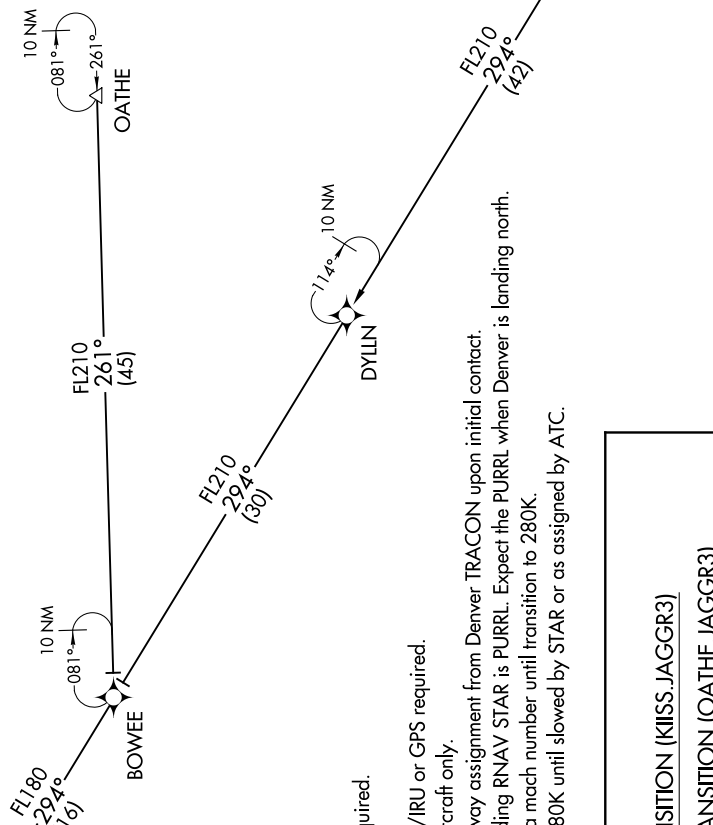
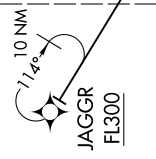


DENVER APP CON  
126.55 269.525  
D-ATIS ARR  
125.6 379.9

SW-1, 25 APR 2019 to 23 MAY 2019

See following page  
for Arrival Routes



- NOTE: RADAR required.
- NOTE: RNAV 1.
- NOTE: DME/DME/IRU or GPS required.
- NOTE: Turbojet aircraft only.
- NOTE: Expect runway assignment from Denver TRACON upon initial contact.
- NOTE: Corresponding RNAV STAR is PURRL. Expect the PURRL when Denver is landing north.
- NOTE: Descend via mach number until transition to 280K.  
Maintain 280K until slowed by STAR or as assigned by ATC.

KIISS TRANSITION (KIISS.JAGGR3)  
OATHE TRANSITION (OATHE.JAGGR3)

(CONTINUED ON FOLLOWING PAGE)

NOTE: Chart not to scale.