

KAILE TWO ARRIVAL (RNAV)

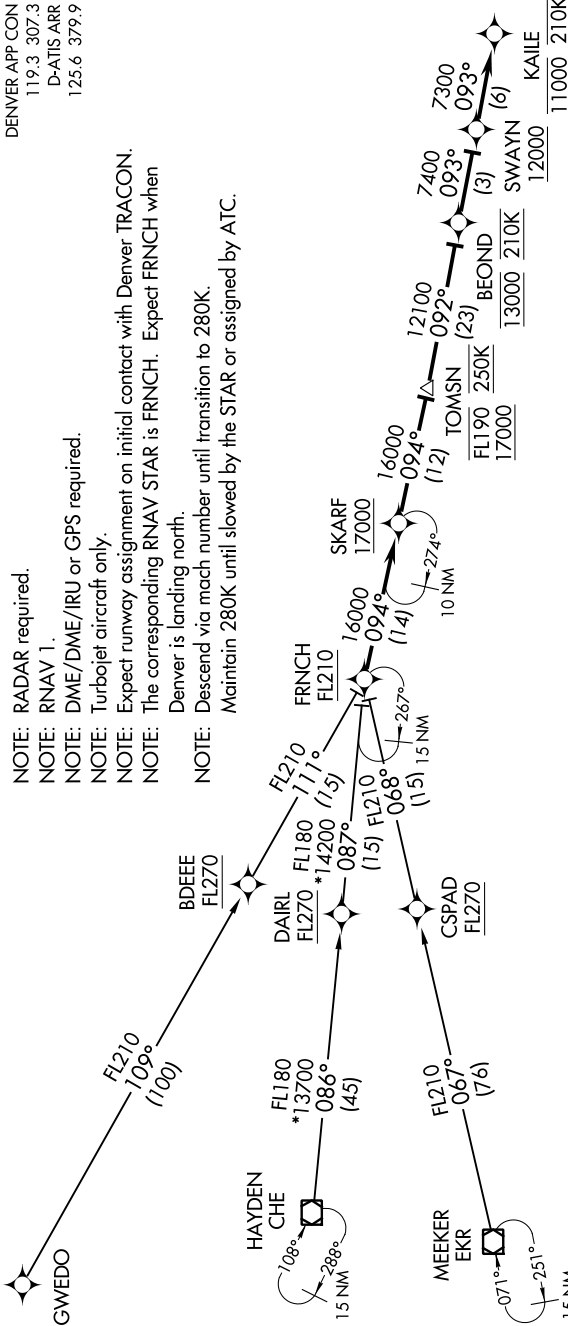
AL-9077 (FAA)

DENVER INTL (DEN)
DENVER, COLORADO

SW-1, 25 APR 2019 to 23 MAY 2019

DENVER APP CON
119.3 307.3
D-ATIS ARR
125.6 379.9

- NOTE: RADAR required.
- NOTE: RNAV 1.
- NOTE: DME/DME/IRU or GPS required.
- NOTE: Turbojet aircraft only.
- NOTE: Expect runway assignment on initial contact with Denver TRACON. The corresponding RNAV STAR is FRNCH. Expect FRNCH when Denver is landing north.
- NOTE: Descend via mach number until transition to 280K. Maintain 280K until slowed by the STAR or assigned by ATC.



NOTE: Chart not to scale.

ARRIVAL ROUTE DESCRIPTION

GWEDO TRANSITION (GWEDO.KAILE2)

HAYDEN TRANSITION (CHE.KAILE2)

MECKER TRANSITION (EKR.KAILE2)

From FRNCH on track 094° to cross SKARF at/above 17000, then as depicted to cross KAILE at 11000 and at 210K. Expect ILS or visual approach as assigned by ATC.

LOST COMMUNICATIONS: In the event of lost communications prior to runway assignment, execute the ILS RWY 16R.

KAILE TWO ARRIVAL (RNAV)

SW-1, 25 APR 2019 to 23 MAY 2019