

# LARKS NINE ARRIVAL

AL-9077 (FAA)

DENVER, COLORADO

DENVER APP CON  
 120.35 379.3  
 BUCKLEY AFB ATIS  
 119.675 259.3  
 CENTENNIAL ATIS  
 120.3  
 DENVER INTL D-ATIS ARR  
 125.6 379.9  
 FRONT RANGE ATIS  
 119.025  
 ROCKY MOUNTAIN METROPOLITAN ATIS  
 126.25

GILL  
 114.2 GLL  
 Chan 89  
 N40°30.23'-W104°33.18'

DENVER  
 117.9 DEN  
 Chan 126  
 N39°48.75'-W104°39.64'

JEFFCO  
 115.4 BJC  
 Chan 101

CENTENNIAL  
 108.2 APA  
 Chan 111

RED TABLE  
 113.0 DBL  
 Chan 77

LARKS  
 N39°15.44'-W105°18.31'  
**TURBOJET VERTICAL NAVIGATION**  
**PLANNING INFORMATION**  
 Expect 17000 250K  
 or as assigned by ATC.

PAYDD  
 N39°24.10'  
 W105°04.73'

TERRO  
 N38°53.47'  
 W105°52.38'

MURFE  
 N39°08.29'  
 W105°29.47'

FALCON  
 116.3 FQF  
 Chan 110  
 N39°41.41'  
 W104°37.26'

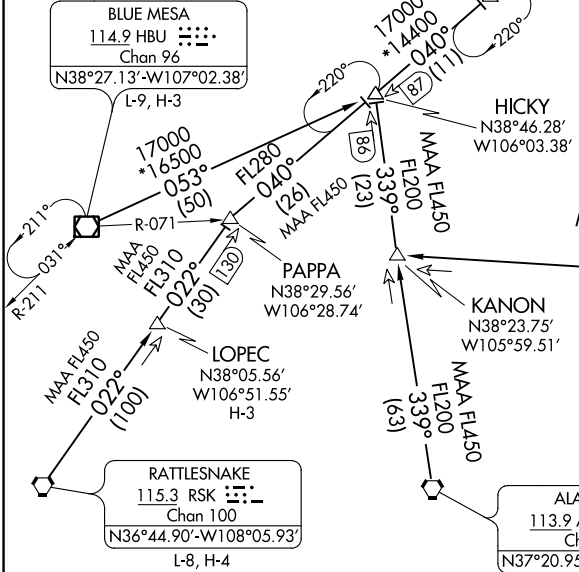
BLUE MESA  
 114.9 HBU  
 Chan 96  
 N38°27.13'-W107°02.38'

BLACK FOREST  
 112.5 BRK  
 Chan 72

HICKY  
 N38°46.28'  
 W106°03.38'

MAA FL450  
 FL200  
 267°  
 (74)

PUEBLO  
 116.7 PUB  
 Chan 114  
 N38°17.66'-W104°25.77'  
 L-10, H-5



NOTE: Adjacent STAR is POWDR ARRIVAL.  
 NOTE: RADAR required.  
 NOTE: Chart not to scale.

(NARRATIVE ON FOLLOWING PAGE)

# LARKS NINE ARRIVAL

DENVER, COLORADO

SW-1, 25 APR 2019 to 23 MAY 2019

SW-1, 25 APR 2019 to 23 MAY 2019