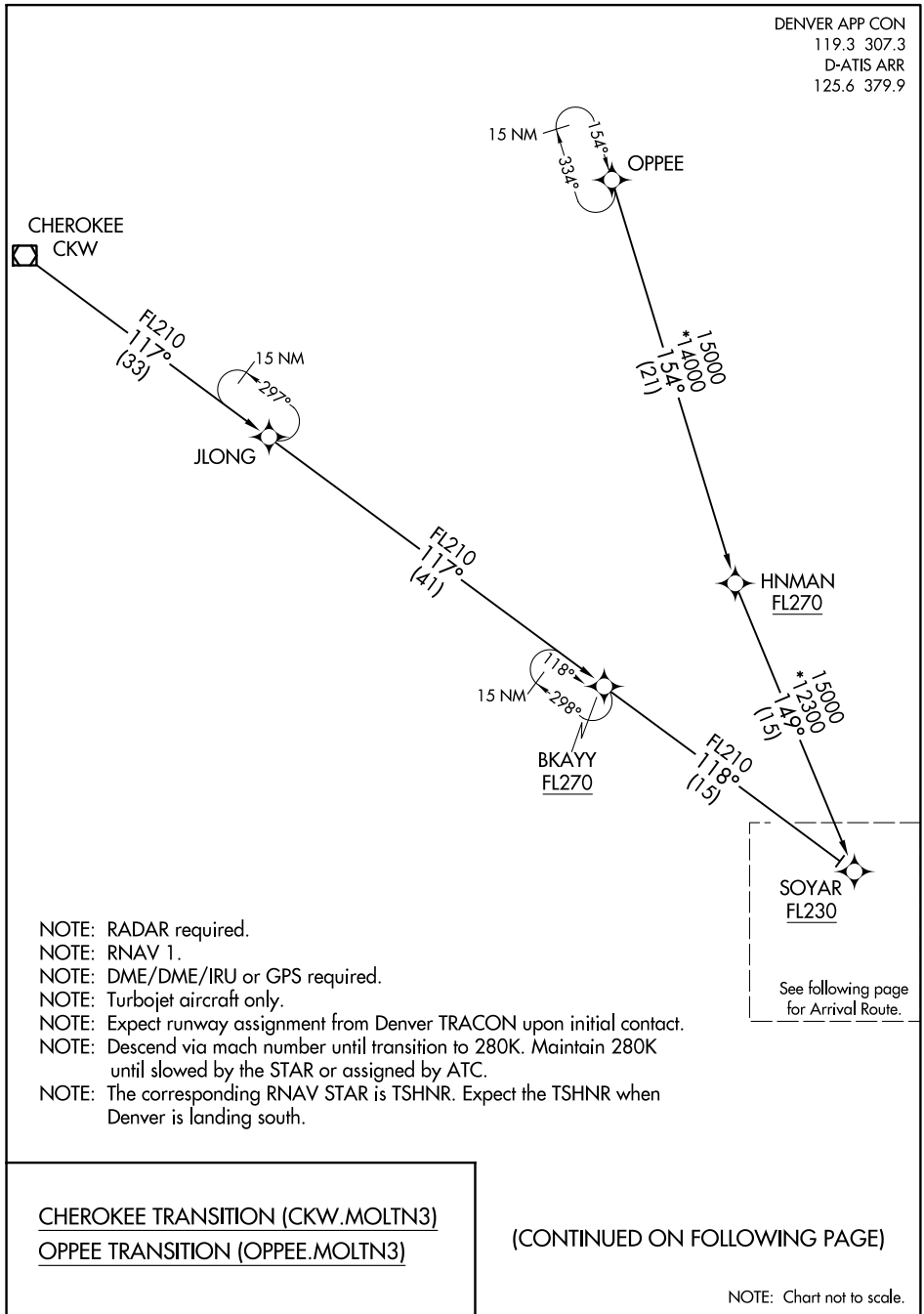


DENVER APP CON
119.3 307.3
D-ATIS ARR
125.6 379.9



SW-1, 25 APR 2019 to 23 MAY 2019

SW-1, 25 APR 2019 to 23 MAY 2019

- NOTE: RADAR required.
- NOTE: RNAV 1.
- NOTE: DME/DME/IRU or GPS required.
- NOTE: Turbojet aircraft only.
- NOTE: Expect runway assignment from Denver TRACON upon initial contact.
- NOTE: Descend via mach number until transition to 280K. Maintain 280K until slowed by the STAR or assigned by ATC.
- NOTE: The corresponding RNAV STAR is TSHNR. Expect the TSHNR when Denver is landing south.

CHEROKEE TRANSITION (CKW.MOLTN3)

OPPEE TRANSITION (OPPEE.MOLTN3)

(CONTINUED ON FOLLOWING PAGE)

NOTE: Chart not to scale.