

APP CRS	Rwy Idg	12000
082°	TDZE	5354
	Apt Elev	5434

RNAV (RNP) Z RWY 8

DENVER INTL (DEN)

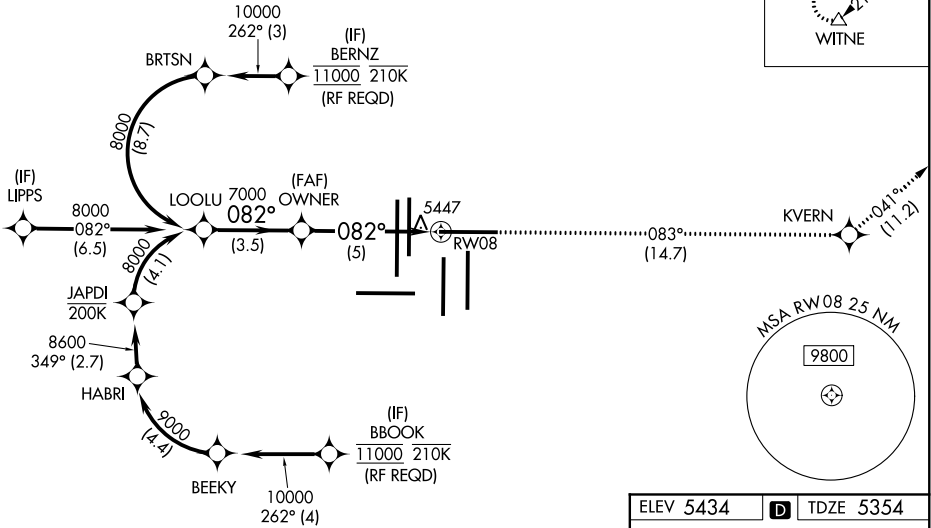
GPS required. For inoperative MALSR, increase RNP 0.10 all Cats visibility to RVR 6000 and RNP 0.30 all Cats visibility to 1 $\frac{3}{8}$ mile. Simultaneous approach authorized with Rwy 7, except for arrivals at BERNZ and BBOOK. Use of FD or AP providing RNAV track guidance required during simultaneous operations. For uncompensated Baro-VNAV systems, procedure NA below -25°C (-13°F) or above 47°C (117°F).

MALSR

MISSED APPROACH:
 Climb to 10000 on track 083° to KVERN and on track 041° to WITNE and hold.

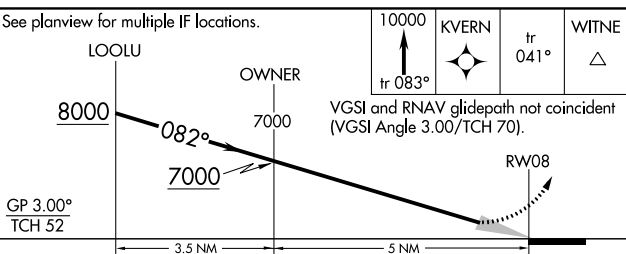
D-ATIS	DENVER APP CON	DENVER TOWER	GND CON	CLNC DEL	CPDLC
ARR 125.6 379.9	119.3 307.3 (NORTH)	120.35 379.3 (SOUTH)	132.35 239.275	121.85 377.1	
DEP 134.025				118.75	

RADAR REQUIRED



SW-1, 25 APR 2019 to 23 MAY 2019

SW-1, 25 APR 2019 to 23 MAY 2019



CATEGORY	A	B	C	D
RNP 0.10 DA		5727/40	373 (300-34)	
RNP 0.30 DA		5777/50	423 (400-1)	

AUTHORIZATION REQUIRED

ELEV 5434 **D** TDZE 5354

082° to RW08

HIRL all Rwys
 TDZ/CL Rwys 7, 16L, 16R, 17R, 26, 34L, 34R, 35L, 35R