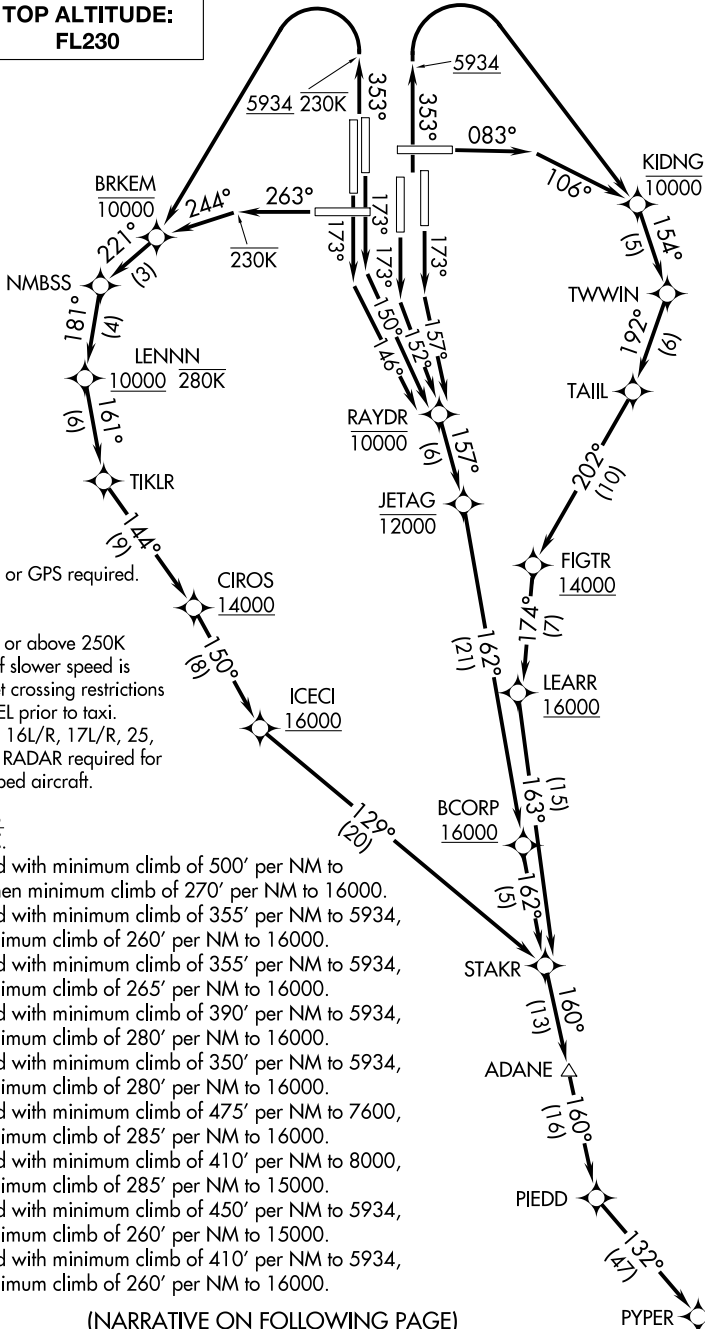


D-ATIS DEP
134.025
CLNC DEL
118.75
CPDLC
DENVER DEP CON
128.45 251.075

**TOP ALTITUDE:
FL230**



- NOTE: DME/DME/IRU or GPS required.
- NOTE: RNAV 1.
- NOTE: Turbojets only.
- NOTE: Accelerate to at or above 250K above 10000. If slower speed is required to meet crossing restrictions advise CLNC DEL prior to taxi.
- NOTE: Takeoff Rwy 8, 16L/R, 17L/R, 25, 34L/R, 35L/R - RADAR required for non-GPS equipped aircraft.

TAKEOFF MINIMUMS

Rwys 7, 26: NA-ATC.

- Rwy 8: Standard with minimum climb of 500' per NM to 5934, then minimum climb of 270' per NM to 16000.
- Rwy 16L: Standard with minimum climb of 355' per NM to 5934, then minimum climb of 260' per NM to 16000.
- Rwy 16R: Standard with minimum climb of 355' per NM to 5934, then minimum climb of 265' per NM to 16000.
- Rwy 17L: Standard with minimum climb of 390' per NM to 5934, then minimum climb of 280' per NM to 16000.
- Rwy 17R: Standard with minimum climb of 350' per NM to 5934, then minimum climb of 280' per NM to 16000.
- Rwy 25: Standard with minimum climb of 475' per NM to 7600, then minimum climb of 285' per NM to 16000.
- Rwys 34L/R: Standard with minimum climb of 410' per NM to 8000, then minimum climb of 285' per NM to 15000.
- Rwy 35L: Standard with minimum climb of 450' per NM to 5934, then minimum climb of 260' per NM to 15000.
- Rwy 35R: Standard with minimum climb of 410' per NM to 5934, then minimum climb of 260' per NM to 16000.

NOTE: Chart not to scale.

(NARRATIVE ON FOLLOWING PAGE)

SW-1, 25 APR 2019 to 23 MAY 2019

SW-1, 25 APR 2019 to 23 MAY 2019