

WAHUU TWO ARRIVAL (RNAV) Transition Routes

SW-1, 25 APR 2019 to 23 MAY 2019

NOTE: RADAR required.

NOTE: RNAV 1.

NOTE: DME/DME/IRU or GPS required.

NOTE: Turbojet aircraft only.

NOTE: Expect runway assignment on initial contact with Denver TRACON.

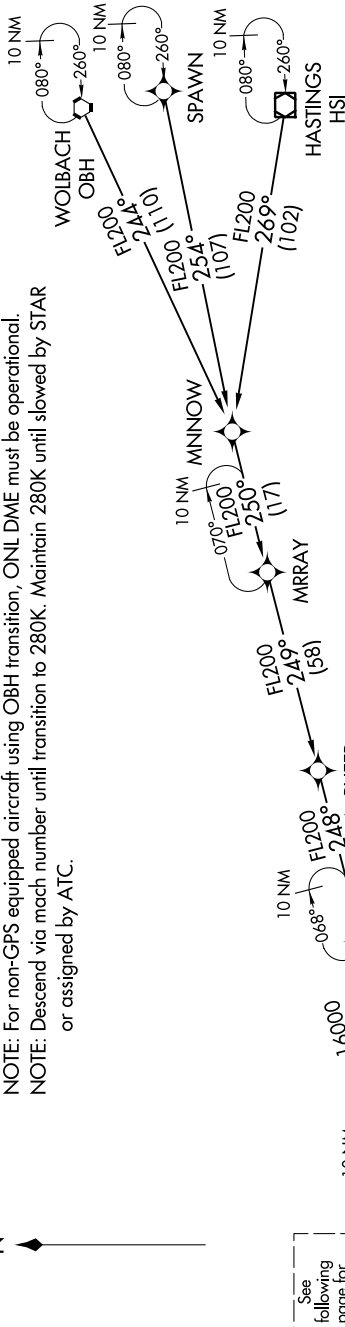
NOTE: The corresponding RNAV STAR is KOHOE. Expect KOHOE when DEN is landing north.

NOTE: For non-GPS equipped aircraft, BJC DME must be operational.

NOTE: For non-GPS equipped aircraft using OBH transition, ONL DME must be operational.

NOTE: Descend via mach number until transition to 280K. Maintain 280K until slowed by STAR or assigned by ATC.

DENVER APP CON
124.95 346.4
D-ATIS ARR
125.6 379.9



See following page for Arrival Route.

16000
+6900
16000
+6600
16000
+6000
17000

SAYGE 17000
SIMON (5)
KOHOE (40)
PIEKE (40)
PUFFR (21)
MURRAY (58)
MNNOW (17)
WOLBACH (OBH)
SPAWN
HASTINGS (HSI)

HASTINGS TRANSITION (HSI.WAHUU2)
SPAWN TRANSITION (SPAWN.WAHUU2)
WOLBACH TRANSITION (OBH.WAHUU2)

(CONTINUED ON FOLLOWING PAGE)

NOTE: Chart not to scale.

WAHUU TWO ARRIVAL (RNAV) Transition Routes

SW-1, 25 APR 2019 to 23 MAY 2019