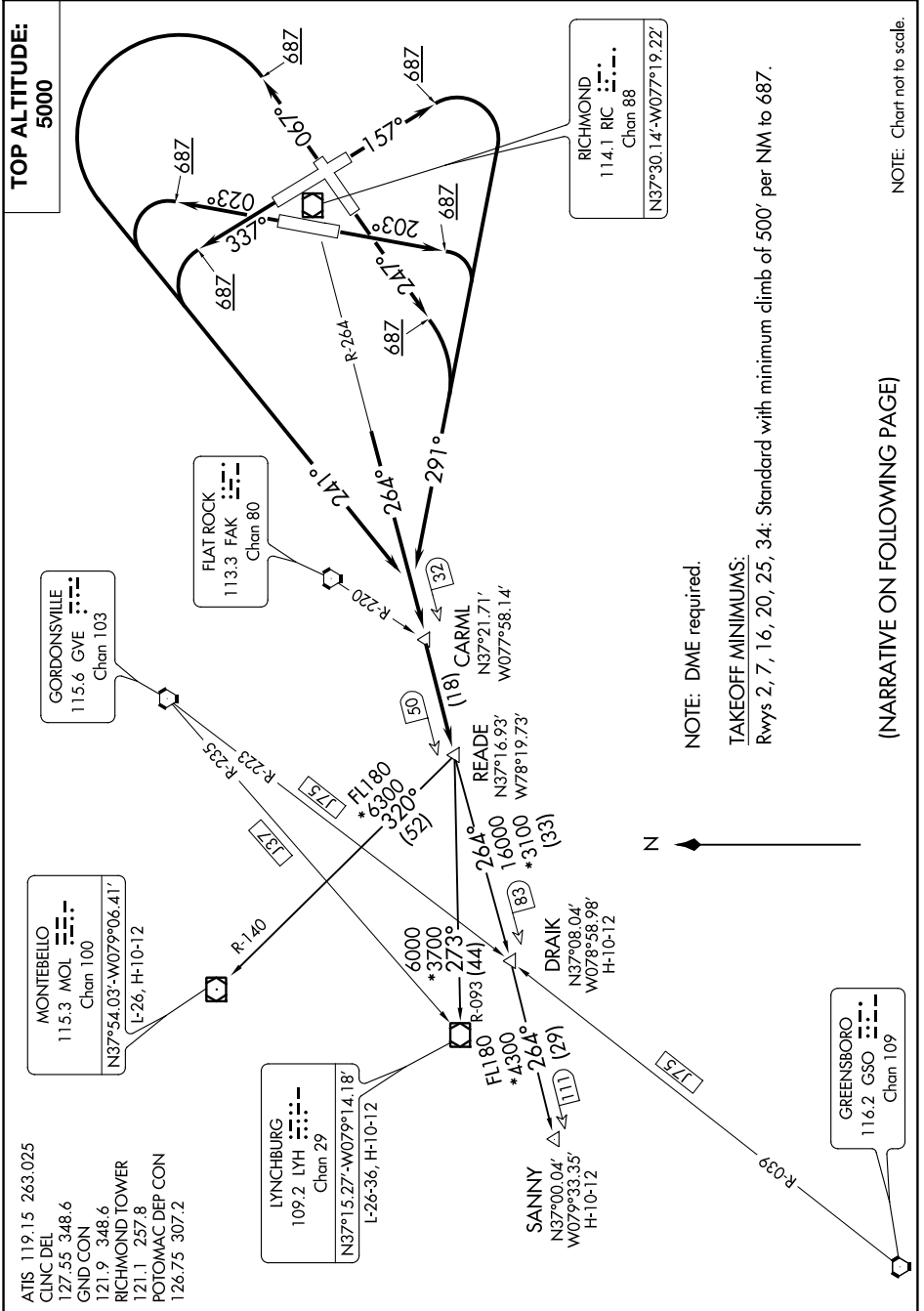


# READE SIX DEPARTURE

NE-3, 15 AUG 2019 to 12 SEP 2019



ATIS 119.15 263.025  
 CLNC DEL 127.55 348.6  
 GND CON 121.9 348.6  
 RICHMOND TOWER 121.1 257.8  
 POTOMAC DEP CON 126.75 307.2

NOTE: DME required.

**TAKEOFF MINIMUMS:**  
 Rwy's 2, 7, 16, 20, 25, 34: Standard with minimum climb of 500' per NM to 687.

(NARRATIVE ON FOLLOWING PAGE)

NOTE: Chart not to scale.

NE-3, 15 AUG 2019 to 12 SEP 2019