

# RNAV (GPS) Z RWY 16

RICHMOND INTL (RIC)

WAAS CH <b>72720</b> W16A	APP CRS <b>157°</b>	Rwy Idg TDZE Apt Elev	<b>9003</b> <b>167</b> <b>168</b>
---------------------------------	------------------------	-----------------------------	---

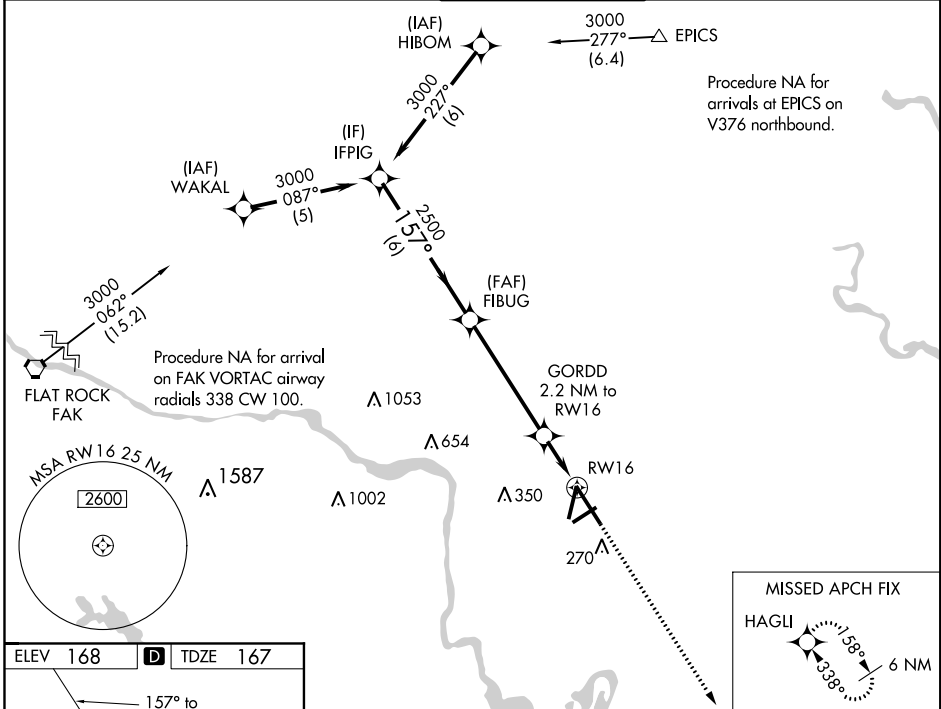
RNP APCH

▼ For uncompensated Baro-VNAV systems, LNAV/VNAV NA below -11°C (13°F) or above 54°C (130°F). For inop ALS increase LNAV/VNAV all Cats visibility to RVR 5400. \*\* RVR 1800 authorized with use of FD or AP or HUD to DA.



MISSED APPROACH:  
Climb to 2500 direct  
HAGLI and hold.

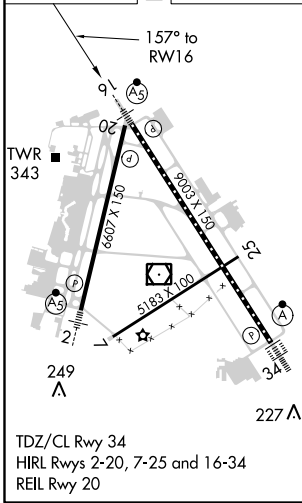
ATIS <b>119.15 263.025</b>	POTOMAC APP CON <b>126.4 282.375</b> (001°-185°) <b>126.75 307.2</b> (186°-360°)	RICHMOND TOWER <b>121.1 257.8</b>	GND CON <b>121.9 348.6</b>	CLNC DEL <b>127.55 348.6</b>
-------------------------------	--	--------------------------------------	-------------------------------	---------------------------------



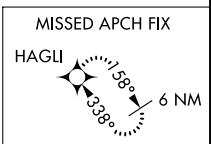
NE-3, 15 AUG 2019 to 12 SEP 2019

NE-3, 15 AUG 2019 to 12 SEP 2019

ELEV <b>168</b>	<b>D</b> TDZE <b>167</b>
-----------------	--------------------------



TDZ/CL Rwy 34  
HIRL Rwy 2-20, 7-25 and 16-34  
REIL Rwy 20



VGSi and RNAV glidepath not coincident (VGSi Angle 3.00/TCH 71). IFPIG 3000 157° FIBUG 2500 GORDD 2.2 NM to RWY 16 *1.2 NM to RWY 16 RWY 16 GP 3.00° TCH 54 6 NM   5 NM   1 NM   1.2 NM	2500	HAGLI		
	↑	✧		
	*LNAV only.			
CATEGORY LPV DA ** LNAV/VNAV DA LNAV MDA CIRCLING	A 367/24 504/31 600/24 660-1	B 200 (200-½) 337 (400-¾) 433 (500-½) 492 (500-1)	C 700 (200-½) 532 (600-1½)	D 720-2 552 (600-2)