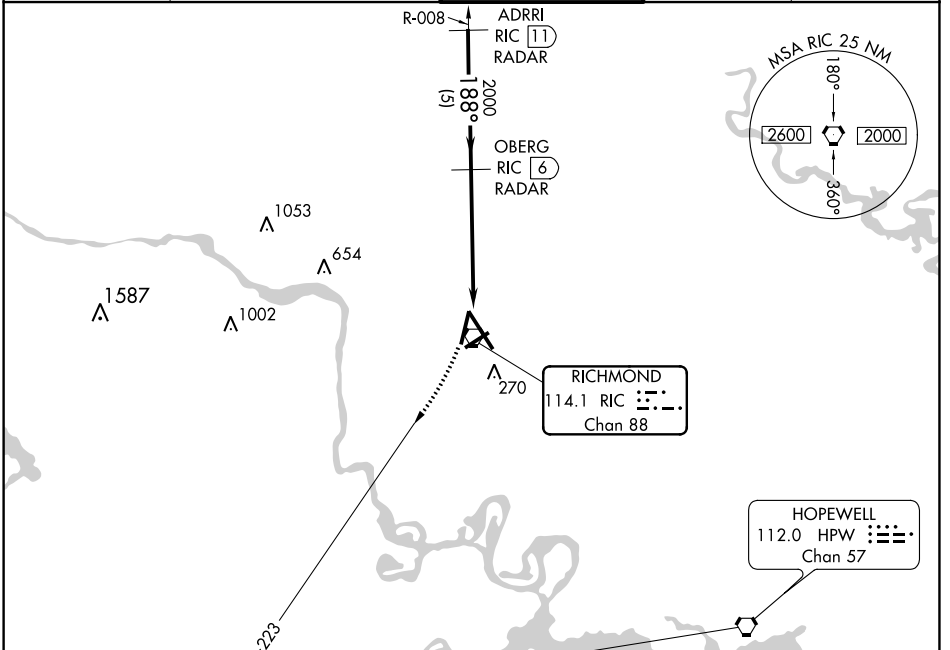


VORTAC RIC <b>114.1</b> Chan <b>88</b>	APP CRS <b>188°</b>	Rwy Idg TDZE <b>167</b> Apt Elev <b>167</b>	<b>6607</b>
--	------------------------	---	-------------

# VOR RWY 20

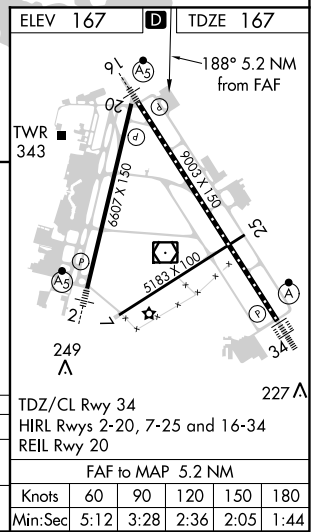
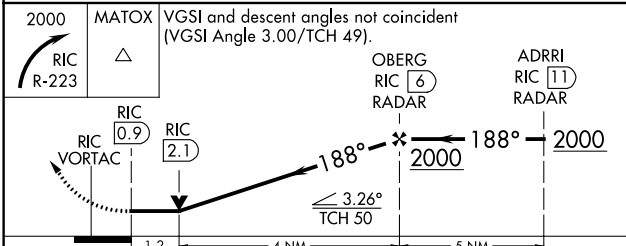
RICHMOND INTL (RIC)

<p><b>▼ DME or RADAR REQUIRED.</b> Visibility reduction by helicopters NA.</p>		<p>MISSED APPROACH: Climbing right turn to 2000 via RIC R-223 to MATOX INT/ RIC 16.3 DME and hold.</p>	
<p>ATIS <b>119.15 263.025</b></p>	<p>POTOMAC APP CON <b>126.4 282.375</b> (001°-185°) <b>126.75 307.2</b> (186°-360°)</p>	<p>RICHMOND TOWER <b>121.1 257.8</b></p>	<p>GND CON <b>121.9 348.6</b></p> <p>CLNC DEL <b>127.55 348.6</b></p>



NE-3, 15 AUG 2019 to 12 SEP 2019

NE-3, 15 AUG 2019 to 12 SEP 2019



2000	MATOX	VGSIs and descent angles not coincident (VGSIs Angle 3.00/TCH 49).	
RIC R-223	△	OBERG RIC (6) RADAR	ADRR1 RIC (11) RADAR
RIC (0.9) VORTAC	RIC (2.1)	2000	2000
1.2	4 NM	5 NM	

CATEGORY	A	B	C	D
S-20	640-1 473 (500-1)		640-1½ 473 (500-1½)	640-1½ 473 (500-1½)
CIRCLING	660-1 493 (500-1)		660-1½ 493 (500-1½)	720-2 553 (600-2)

TWZ/CL Rwy 34	
HIRL Rwy 2-20, 7-25 and 16-34	
REIL Rwy 20	
FAF to MAP 5.2 NM	
Knots	60 90 120 150 180
Min:Sec	5:12 3:28 2:36 2:05 1:44