

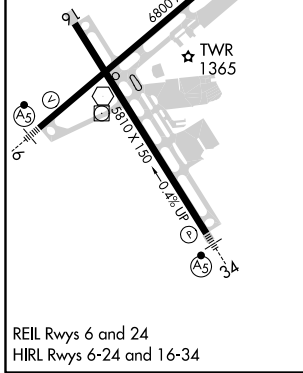
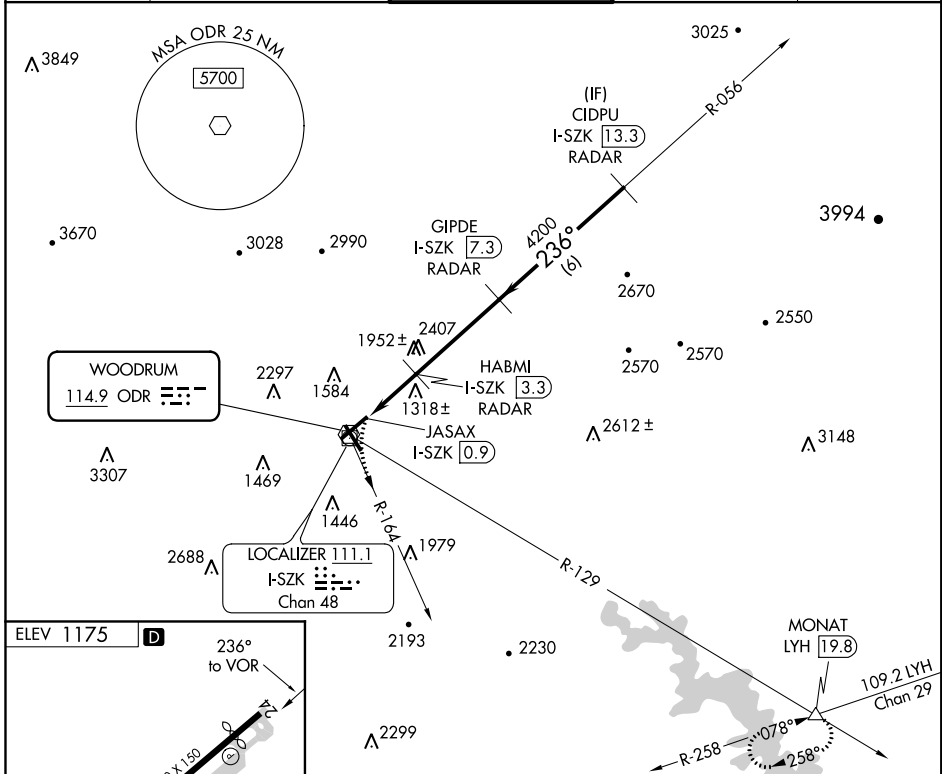
VOR ODR 114.9	APP CRS 236°	Rwy ldg TDZE Apt Elev N/A 1175
-------------------------	------------------------	---

VOR/DME-A

ROANOKE-BLACKSBURG RGNL/WOODRUM FIELD (R.O.A)

RADAR required.		MISSED APPROACH: Climbing left turn to 4000 on ODR VOR R-164 and LYH VOR/DME R-258 to MONAT/LYH 19.8 DME and hold.		
		Circling NA northwest of Rwy 6-24. DME from I-SZK LDA. Simultaneous reception of ODR VOR and I-SZK DME required.		
-13°C				

ATIS 132.375	ROANOKE APP CON 126.9 339.8	ROANOKE TOWER 118.3 257.8	GND CON 121.9 257.8	CLNC DEL 119.7
------------------------	---------------------------------------	-------------------------------------	-------------------------------	--------------------------



4000 ODR R-164	LYH R-258	MONAT	GIPDE I-SZK 7.3 RADAR	CIDPU I-SZK 13.3 RADAR
JASAX I-SZK 0.9		HABMI I-SZK 3.3 RADAR		
2.4 NM		4 NM		6 NM
CATEGORY	A	B	C	D
CIRCLING	1740-1	565 (600-1)	2420-3 1245 (1300-3)	2800-3 1625 (1700-3)

NE-3, 15 AUG 2019 to 12 SEP 2019

NE-3, 15 AUG 2019 to 12 SEP 2019

VOR/DME-A