

# NUMMY THREE ARRIVAL

WASHINGTON, DC

NE-3, 15 AUG 2019 to 12 SEP 2019

## ARRIVAL ROUTE DESCRIPTION

**BUCKO TRANSITION (BUCKO.NUMMY3):** From over BUCKO on ESL R-282 to ESL VOR/DME, then on ESL R-103 to DRUZZ, then on AML R-297 to AML VOR/DME.

**Landing DCA Rwy 1, 4, 33, ADW Rwys 1L, 1R, and DAA:** From over AML VOR/DME on AML VOR/DME R-130 to cross NUMMY at 6000, then on heading 187°, expect radar vectors to final approach course.

**Landing DCA Rwys 15, 19, 22 and ADW Rwys 19L, 19R:** Depart AML VOR/DME on heading 070°, expect radar vectors to final approach course.

POTOMAC APP CON  
118.675 323.175  
RONALD REAGAN  
WASHINGTON NATIONAL  
D-ATIS 132.65  
JOINT BASE ANDREWS D-ATIS  
133.675 251.05  
DAVISON AAF ATIS  
128.175

MORGANTOWN  
111.6 MGW  
Chan 53

KESSEL  
110.8 ESL  
Chan 45  
FL230  
N39°13.53'-W78°59.37'

MARTINSBURG  
112.1 MRB  
Chan 58

BUCKO  
N39°17.63'  
W79°49.50'  
H-10-12  
FL310

HONINR  
N39°14.78'  
W79°14.15'  
FL260

EKINS  
114.2 EKN  
Chan 89

WEWIL  
N39°06.10'  
W78°06.86'  
14000

SEPII  
N39°00.55'  
W77°45.23'  
11000

DRUZZ  
N39°09.80'  
W78°21.48'  
15000

NEWR  
N39°04.22'  
W77°59.50'  
12000

FORGT  
N39°02.12'  
W77°51.32'

ALWYZ  
N38°59.01'  
W77°39.28'

ARMEL  
113.5 AML  
Chan 82  
N38°56.08'-W77°28.00'

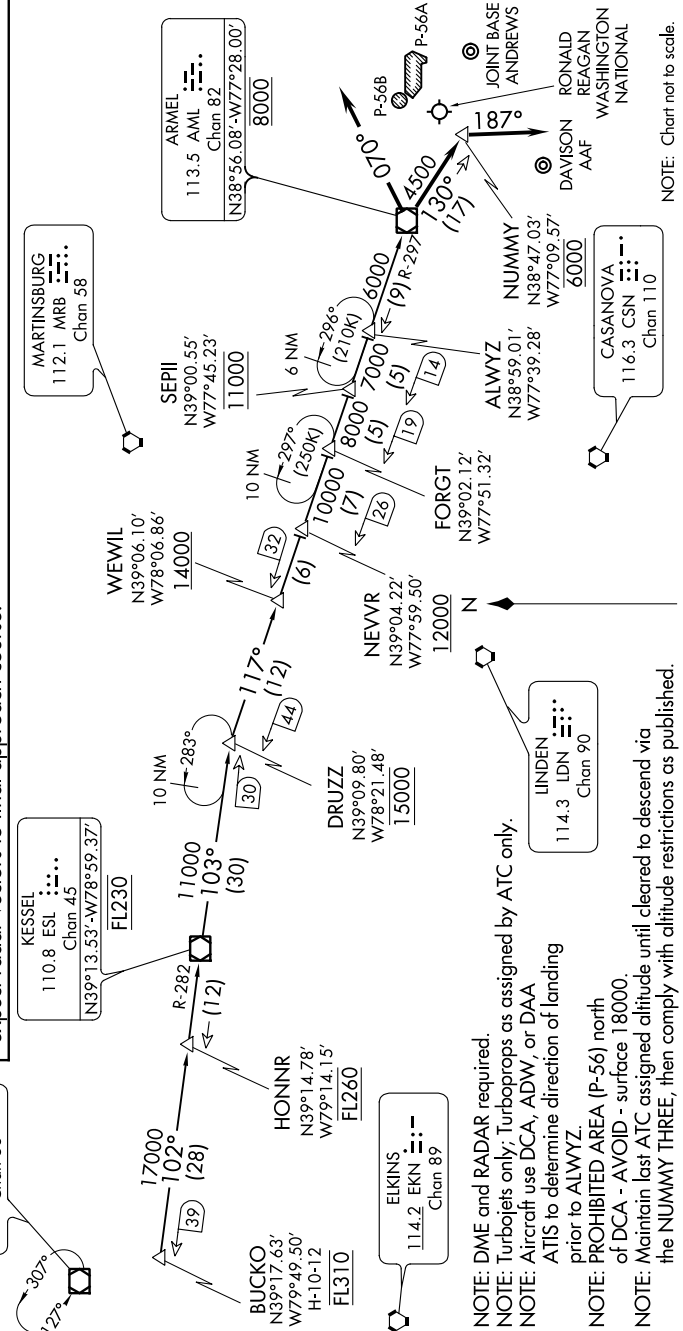
NUMMY  
N38°47.03'  
W77°09.57'  
6000

DAVISON  
AAF  
RONALD  
REAGAN  
WASHINGTON  
NATIONAL

JOINT BASE  
ANDREWS

LINDEN  
114.3 LDN  
Chan 90

CASANOVA  
116.3 CSN  
Chan 110



NOTE: DME and RADAR required.  
NOTE: Turboprops only; Turboprops as assigned by ATC only.  
NOTE: Aircraft use DCA, ADW, or DAA ATIS to determine direction of landing prior to ALWYZ.  
NOTE: PROHIBITED AREA (P-56) north of DCA - AVOID - surface 18000.  
NOTE: Maintain last ATC assigned altitude until cleared to descend via the NUMMY THREE, then comply with altitude restrictions as published.

NOTE: Chart not to scale.

# NUMMY THREE ARRIVAL

WASHINGTON, DC

NE-3, 15 AUG 2019 to 12 SEP 2019