

| | | |
|-------------|----------|-------------|
| APP CRS | Rwy Idg | 6869 |
| 007° | TDZE | 14 |
| | Apt Elev | 14 |

RNAV (RNP) RWY 1

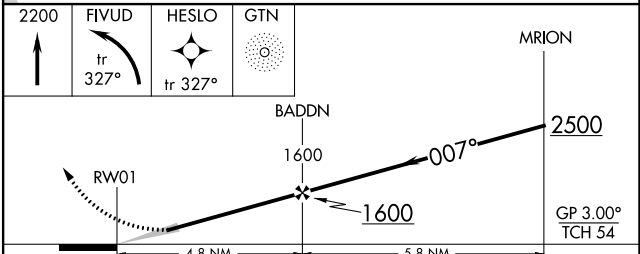
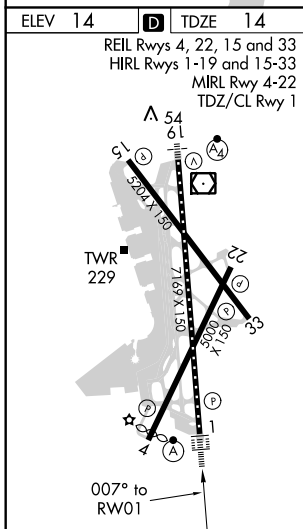
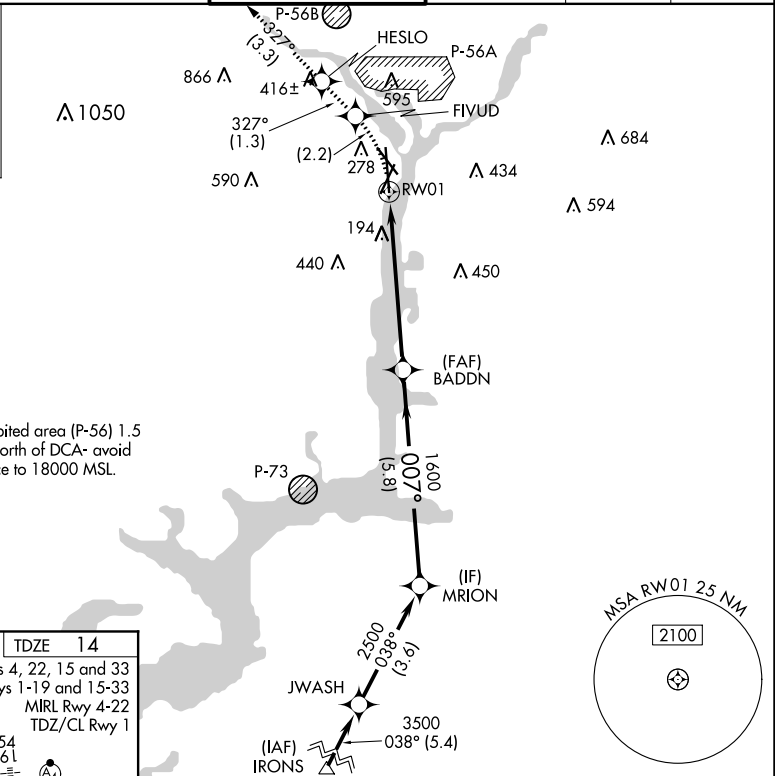
RONALD REAGAN WASHINGTON NATIONAL (DCA)

▽ For uncompensated Baro-VNAV systems, procedure NA below -10°C (14°F) or above 48°C (120°F). RF required. GPS required. Missed approach requires RNP less than 1.0. For inop ALS, increase RNP 0.30 all Cats visibility to 1¼ mile.

ALSF-2

MISSED APPROACH: (Do not exceed 185K until FIVUD) Climb to 2200 left turn to FIVUD and on track 327° to HESLO and on track 327° to GTN NDB and hold.

| | | | | | |
|---------------|--|--------------------|--------------------|---------------|-------|
| D-ATIS | POTOMAC APP CON | WASHINGTON TOWER | GND CON | CLNC DEL | CPDLC |
| 132.65 | 119.85 239.25 (WEST/SOUTH) 124.2 360.8 (EAST) | 119.1 257.6 | 121.7 257.6 | 128.25 | |



| | | | | |
|-------------|--------|---|--------------|---|
| CATEGORY | A | B | C | D |
| RNP 0.30 DA | 552/60 | | 538 (600-1¼) | |

AUTHORIZATION REQUIRED