

LOC/DME I-LEI 108.5 Chan 22	APP CRS 234°	Rwy Idg 7500 TDZE 435 Apt Elev 435
---	------------------------	---

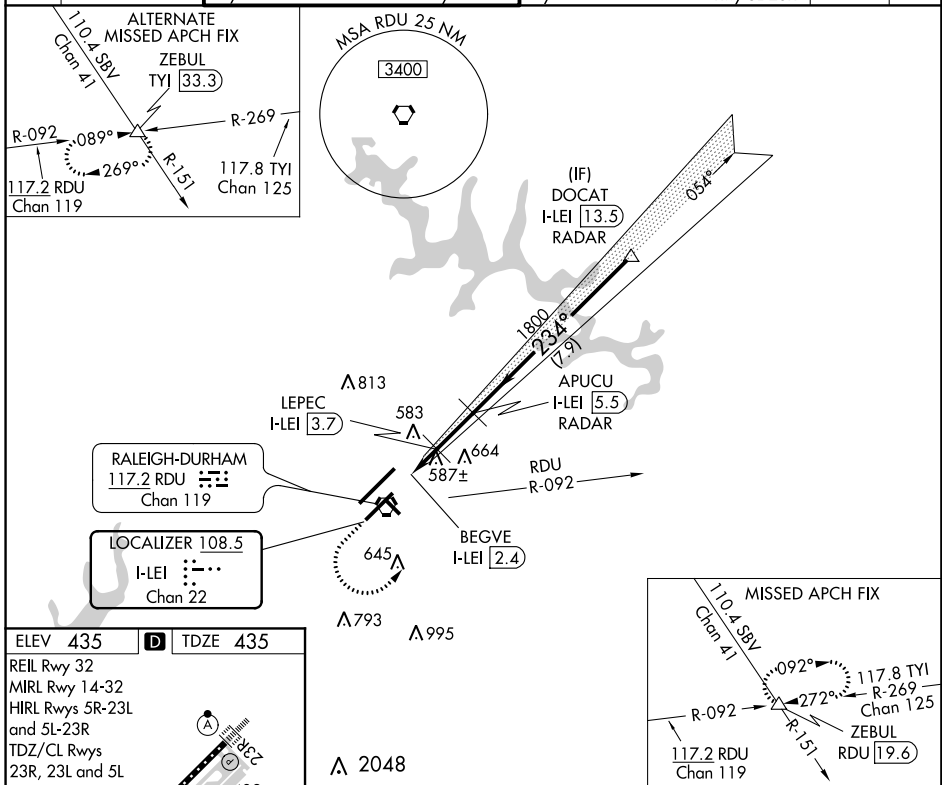
ILS or LOC RWY 23L

RALEIGH-DURHAM INTL (RDU)

RADAR required for procedure entry. DME required for LOC only.

<p>Simultaneous approach authorized. For inop ALS, increase S-ILS 23L all Cats visibility to RVR 5500. For inop ALS, increase S-LOC-23L Cat C/D visibility to 2½ SM. Localizer unusable for coupled approaches below 1100 or within 2 NM of threshold.</p>	MALSR 	MISSED APPROACH: Climb to 1100 then climbing left turn to 2600 on heading 050° and RDU VORTAC R-092 to ZEBUL INT and hold.

D-ATIS	RALEIGH APP CON	(EAST) RALEIGH TOWER (WEST)	(EAST) GND CON	(WEST)	CLNC DEL	CPDLC
123.8	128.3 307.9	127.45 257.8 Rwys 5R-23L and 14-32	119.3 257.8 Rwy 5L-23R	121.9 348.6 Rwys 5R-23L and 14-32	121.7 348.6 Rwy 5L-23R	120.1



ELEV 435	D	TDZE 435
REIL Rwy 32		
MIRL Rwy 14-32		
HIRL Rwys 5R-23L and 5L-23R		
TDZ/CL Rwys 23R, 23L and 5L		

1100	2600	RDU R-092	ZEBUL	APUCU I-LEI [5.5] RADAR	Localizer unusable from 1 NM from threshold.	DOCAT I-LEI [3.5] RADAR																				
*LOC only.																										
		LEPEC I-LEI [3.7]	BEGVE I-LEI [2.4]	1800	234°	4000																				
<table border="1"> <tr> <th>CATEGORY</th> <th>A</th> <th>B</th> <th>C</th> <th>D</th> </tr> <tr> <td>S-ILS 23L</td> <td colspan="4">806/35 371 (400-¾)</td> </tr> <tr> <td>S-LOC 23L</td> <td colspan="4">840/40 405 (500-¾)</td> </tr> <tr> <td>C CIRCLING</td> <td>960-1¼</td> <td>525 (600-1¼)</td> <td>1040-1¾ 605 (700-1¾)</td> <td>1180-2½ 745 (800-2½)</td> </tr> </table>							CATEGORY	A	B	C	D	S-ILS 23L	806/35 371 (400-¾)				S-LOC 23L	840/40 405 (500-¾)				C CIRCLING	960-1¼	525 (600-1¼)	1040-1¾ 605 (700-1¾)	1180-2½ 745 (800-2½)
CATEGORY	A	B	C	D																						
S-ILS 23L	806/35 371 (400-¾)																									
S-LOC 23L	840/40 405 (500-¾)																									
C CIRCLING	960-1¼	525 (600-1¼)	1040-1¾ 605 (700-1¾)	1180-2½ 745 (800-2½)																						