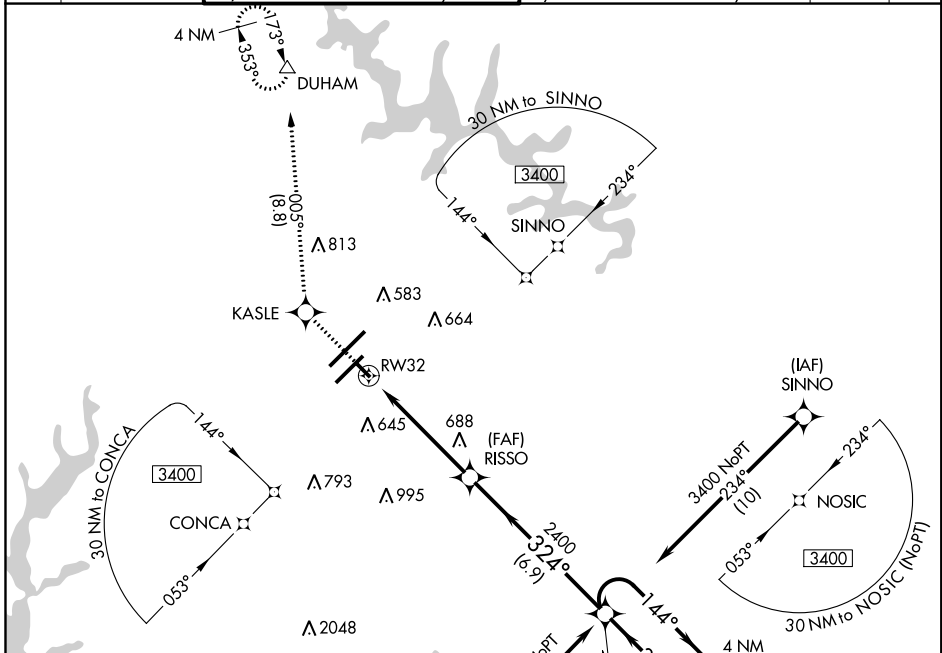


APP CRS	Rwy Idg	<b>3570</b>
<b>324°</b>	TDZE	<b>429</b>
	Apt Elev	<b>435</b>

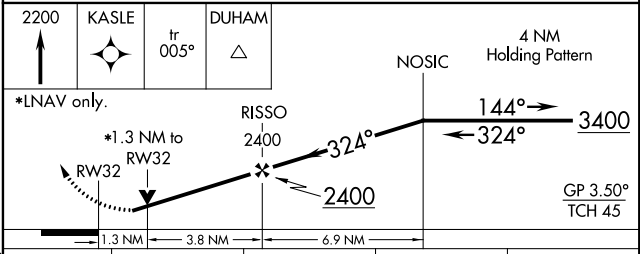
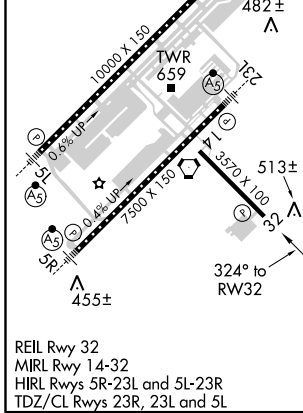
# RNAV (GPS) RWY 32

RALEIGH-DURHAM INTL (RDU)

RNP APCH.		Rwy 32 helicopter visibility reduction below 3/4 SM NA. Baro-VNAV NA below -1.5°C (5°F) or above 48°C (118°F).		MISSED APPROACH: Climb to 2200 direct KASLE and on track 005° to DUHAM and hold.			
D-ATIS	RALEIGH APP CON	(EAST) RALEIGH TOWER	(WEST)	(EAST) GND CON	(WEST)	CLNC DEL	CPDLC
<b>123.8</b>	<b>128.3 307.9</b>	<b>127.45 257.8</b>	<b>119.3 257.8</b>	<b>121.9 348.6</b>	<b>121.7 348.6</b>	<b>120.1</b>	
		Rwys 5R-23L and 14-32	Rwy 5L-23R	Rwys 5R-23L and 14-32	Rwy 5L-23R		



ELEV	<b>435</b>	<b>D</b>	TDZE	<b>429</b>
------	------------	----------	------	------------



CATEGORY	A	B	C	D
LNAV/VNAV	DA	820-1¼ 391 (400-1¼)		NA
LNAV MDA	1000-1	571 (600-1)	1000-1½ 571 (600-1½)	NA
<b>C</b> CIRCLING	1000-1¼	565 (600-1¼)	1040-1¾ 605 (700-1¾)	NA

SE-2, 15 AUG 2019 to 12 SEP 2019

SE-2, 15 AUG 2019 to 12 SEP 2019