

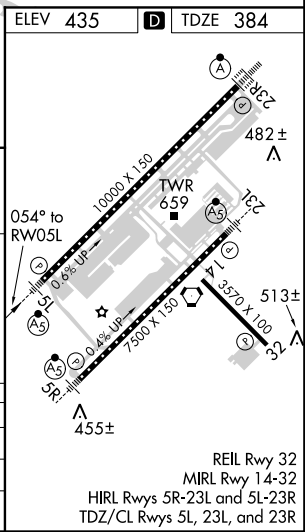
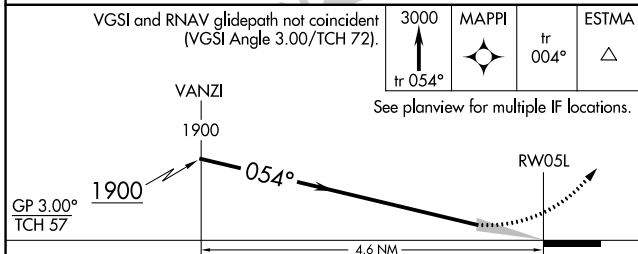
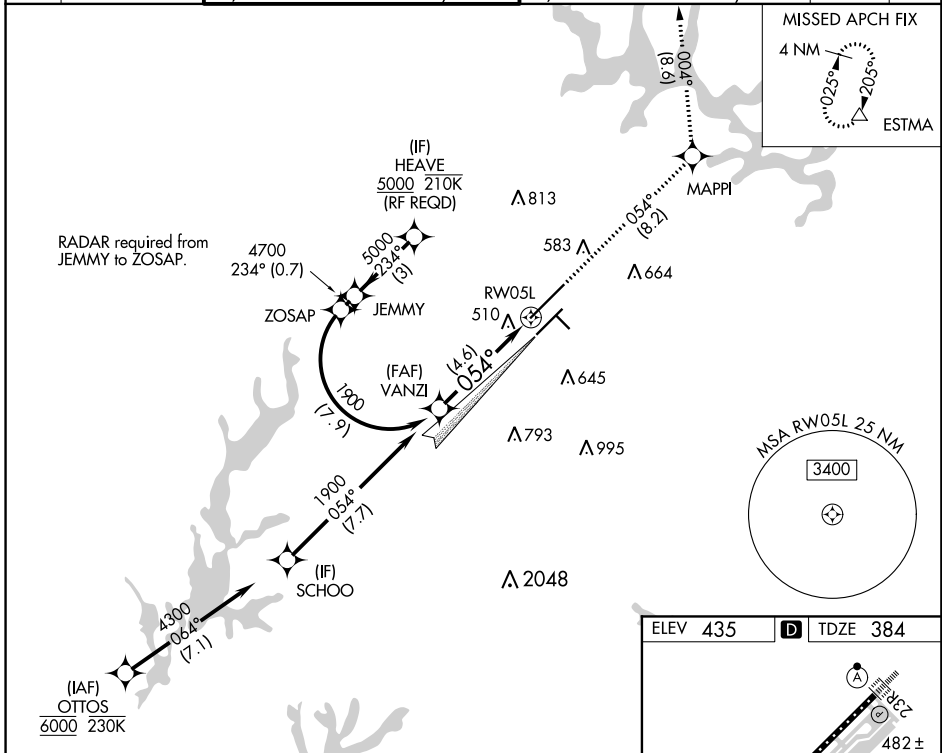
| | | |
|-------------|----------|--------------|
| APP CRS | Rwy Idg | 10000 |
| 054° | TDZE | 384 |
| | Apt Elev | 435 |

RNAV (RNP) Z RWY 5L

RALEIGH-DURHAM INTL (RDU)

| | | |
|--|-------|---|
| RNP AR APCH. | MALSR | MISSED APPROACH: Climb to 3000 on track 054° to MAPPI and on track 004° to ESTMA and hold. |
| ▼ For uncompensated Baro-VNAV systems, LNAV/VNAV NA below -9°C or above 47°C. Simultaneous approach authorized. Use of FD or AP providing RNAV track guidance required during simultaneous operations. For inop ALS, increase RNP 0.10 all Cats visibility to RVR 6000 and RNP 0.30 all Cats visibility to 1%. | | |

| | | | | | | |
|--------------|--------------------|--|----------------------------------|---|----------------------------------|--------------|
| D-ATIS | RALEIGH APP CON | (EAST) RALEIGH TOWER (WEST) | (EAST) GND CON | (WEST) | CLNC DEL | CPDLC |
| 123.8 | 128.3 307.9 | 127.45 257.8 Rwys 5R-23L and 14-32 | 119.3 257.8 Rwy 5L-23R | 121.9 348.6 Rwys 5R-23L and 14-32 | 121.7 348.6 Rwy 5L-23R | 120.1 |



| CATEGORY | A | B | C | D |
|-------------|---|--------|--------------|---|
| RNP 0.10 DA | | 727/30 | 343 (300-5%) | |
| RNP 0.30 DA | | 821/50 | 437 (400-1) | |

AUTHORIZATION REQUIRED

SE-2, 15 AUG 2019 to 12 SEP 2019

SE-2, 15 AUG 2019 to 12 SEP 2019