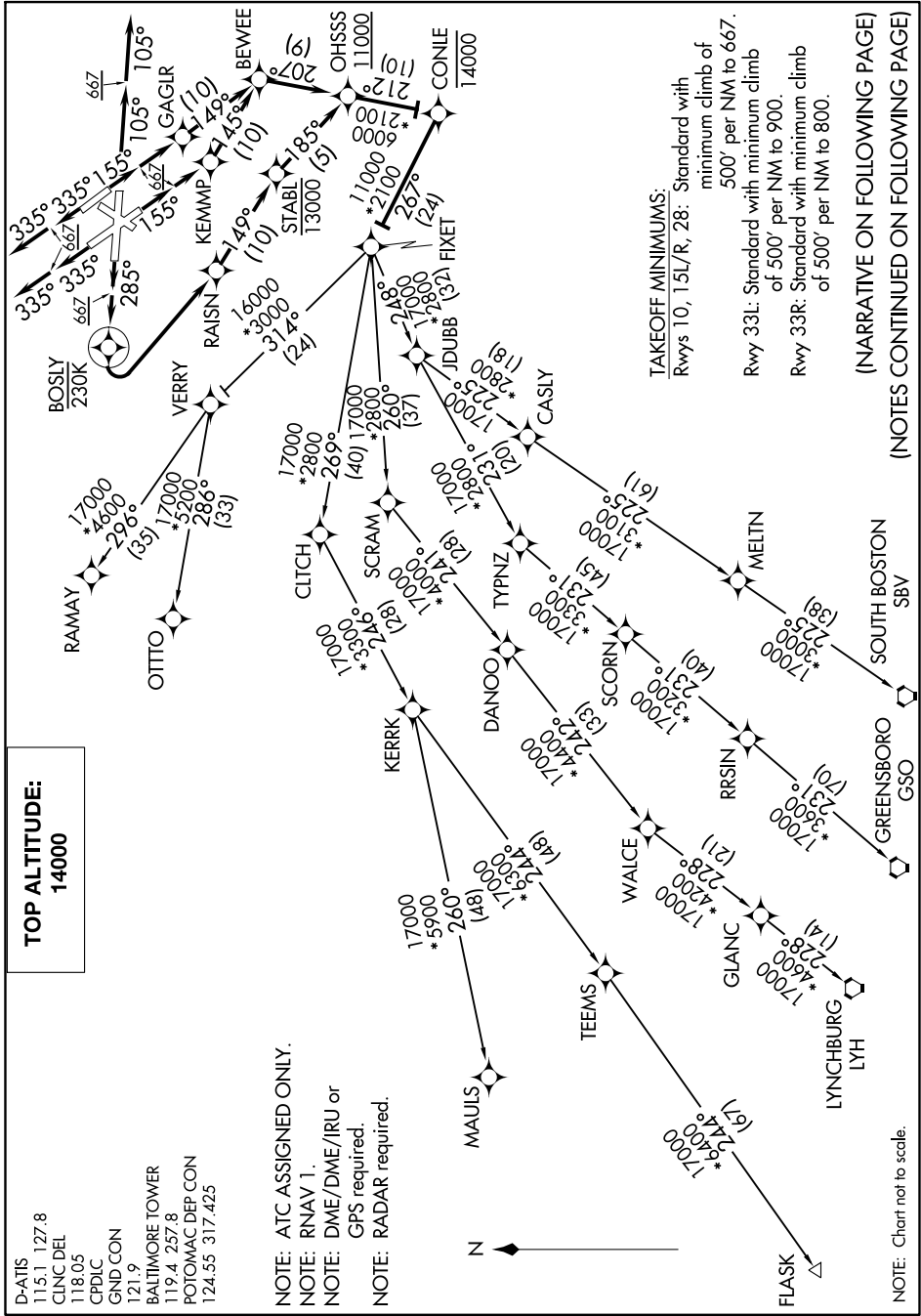


# FIXET TWO DEPARTURE (RNAV)

NE-3: 15 AUG 2019 to 12 SEP 2019



**TOP ALTITUDE:**  
14000

D-ATIS 115.1 127.8  
 CLNC DEL 118.05  
 CPDLC  
 GND CON 121.9  
 BALTIMORE TOWER 119.4 257.8  
 POTOMAC DEP CON 124.55 317.425

NOTE: ATC ASSIGNED ONLY.  
 NOTE: RNAV 1.  
 NOTE: DME/DME/IRU or GPS required.  
 NOTE: RADAR required.

TAKEOFF MINIMUMS:  
 Rwy 10, 15L/R, 28: Standard with minimum climb of 500' per NM to 667.  
 Rwy 33L: Standard with minimum climb of 500' per NM to 900.  
 Rwy 33R: Standard with minimum climb of 500' per NM to 800.

(NARRATIVE ON FOLLOWING PAGE)  
 (NOTES CONTINUED ON FOLLOWING PAGE)

NE-3: 15 AUG 2019 to 12 SEP 2019

NOTE: Chart not to scale.