


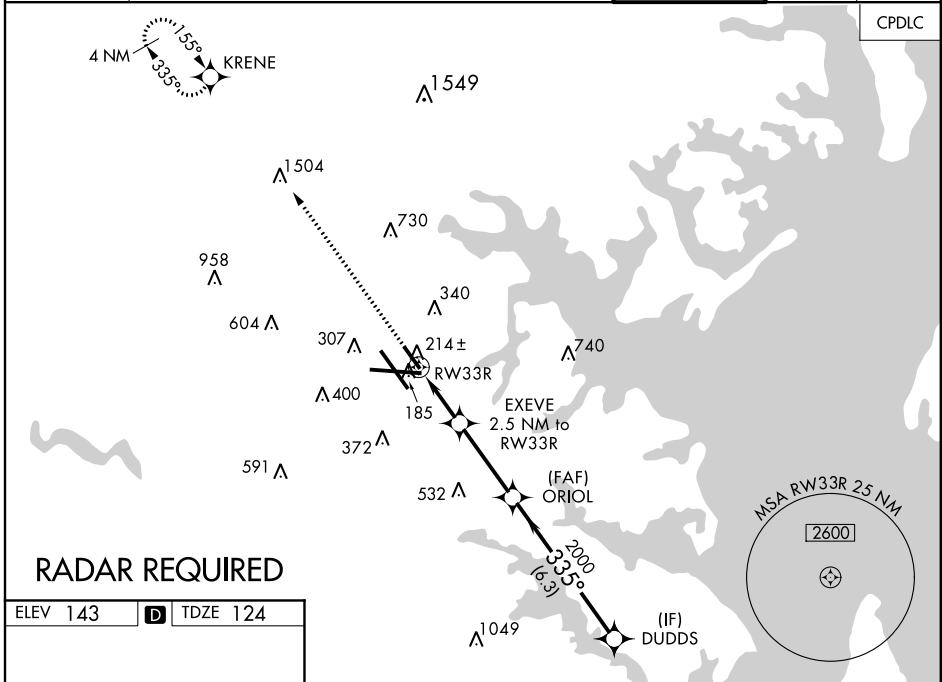
WAAS CH 69208 W33B	APP CRS 335°	Rwy Idg TDZE 124 Apt Elev 143	5000
--	------------------------	---	-------------

BALTIMORE/ **RNAV (GPS) RWY 33R**
WASHINGTON INTL THURGOOD MARSHALL (BWI)

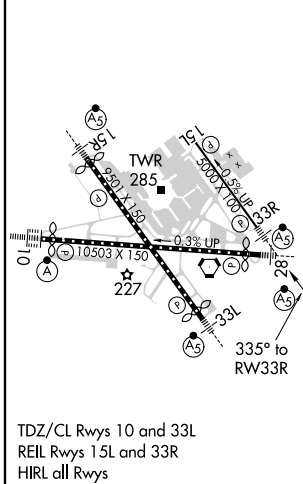
▼ For uncompensated Baro-VNAV systems, LNAV/VNAV NA below -13°C (-9°F) or above 54°C (130°F). DME/DME RNP-0.3 NA. For inoperative MALSR, increase LNAV/VNAV all Cats visibility to RVR 5000 and LNAV all Cats visibility to RVR 5500. Simultaneous approach authorized. Use of FD or AP providing RNAV track guidance required during simultaneous operations. LNAV procedure NA during simultaneous operations. Helicopter visibility reduction below RVR 4000 NA. Inoperative table does not apply to LPV, all Cats.

MALSR  MISSED APPROACH: Climb to 3000 direct KRENE and hold.

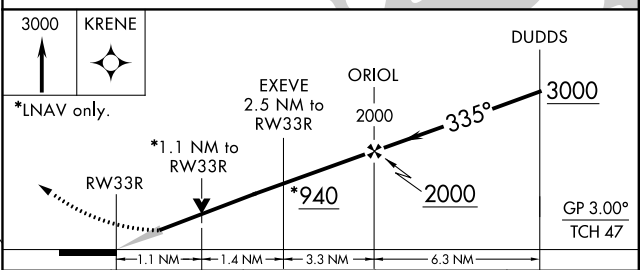
D-ATIS 115.1 127.8	POTOMAC APP CON (020°-100°) 119.0 282.275 (101°-130°) 124.55 317.425	119.7 290.475 (131°-180°) 128.7 307.9 (181°-019°)	BALTIMORE TOWER 119.4 257.8	GND CON 121.9	CLNC DEL 118.05
------------------------------	--	--	--	-------------------------	---------------------------



ELEV 143	D	TDZE 124
----------	----------	----------



BALTIMORE, MARYLAND
Amdt 4A 26MAY16



CATEGORY	A	B	C	D
LPV DA	333/40	209 (200-¾)		NA
LNAV/VNAV DA	406/40	282 (300-¾)		NA
LNAV MDA	520/40	396 (400-¾)		NA
C CIRCLING	640-1 497 (500-1)	660-1 517 (600-1)		NA

BALTIMORE/WASHINGTON INTL THURGOOD MARSHALL (BWI)
39°11'N-76°40'W
RNAV (GPS) RWY 33R

NE-3, 15 AUG 2019 to 12 SEP 2019

NE-3, 15 AUG 2019 to 12 SEP 2019