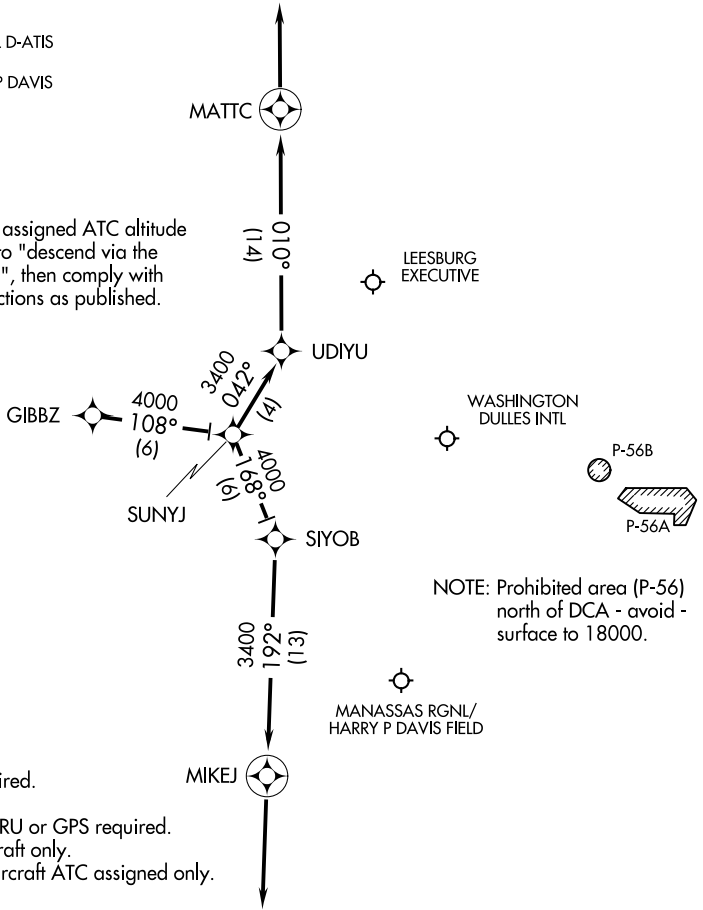


# GIBBZ THREE ARRIVAL (RNAV) Arrival Routes

WASHINGTON, DC

POTOMAC APP CON  
120.45 306.925  
WASHINGTON DULLES INTL D-ATIS  
134.85  
MANASSAS RGNL/HARRY P DAVIS  
FIELD ATIS 125.175

NOTE: Maintain last assigned ATC altitude until cleared to "descend via the GIBBZ THREE", then comply with altitude restrictions as published.



- NOTE: RADAR required.
- NOTE: RNAV 1.
- NOTE: DME/DME/IRU or GPS required.
- NOTE: Turbojet aircraft only.
- NOTE: Turboprop aircraft ATC assigned only.

NOTE: Chart not to scale.

## ARRIVAL ROUTE DESCRIPTION

LANDING IAD RUNWAYS 19C, 19L, 19R: From GIBBZ on track 108° to SUNYJ, then on track 042° to UDIYU, then on track 010° to MATTC. Expect radar vectors to final approach course.

LANDING IAD RUNWAYS 1C, 1L, 1R, 30: From over GIBBZ on track 108° to SUNYJ, then on track 168° to SIYOB, then on track 192° to MIKEJ. Expect radar vectors to final approach course.

NE-3, 15 AUG 2019 to 12 SEP 2019

NE-3, 15 AUG 2019 to 12 SEP 2019