

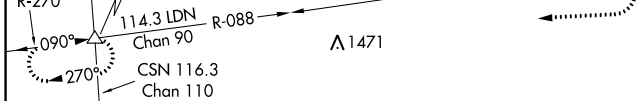
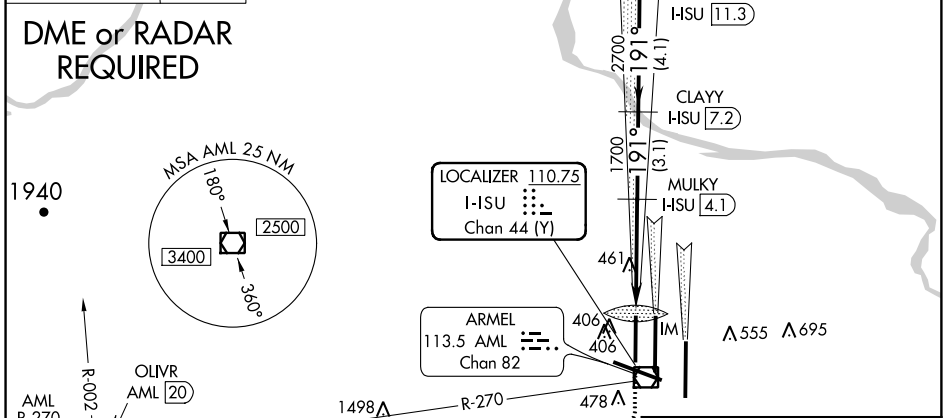
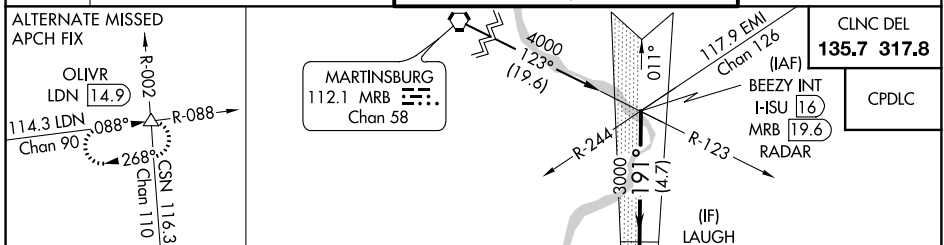
LOC/DME I-HSU <b>110.75</b> Chan <b>44 (Y)</b>	APP CRS <b>191°</b>	Rwy Idg TDZE Apt Elev <b>9400</b> <b>278</b> <b>312</b>
--	------------------------	--

# ILS or LOC/DME RWY 19R

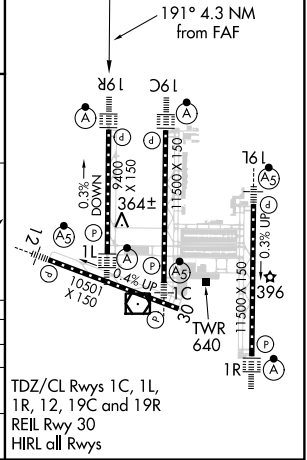
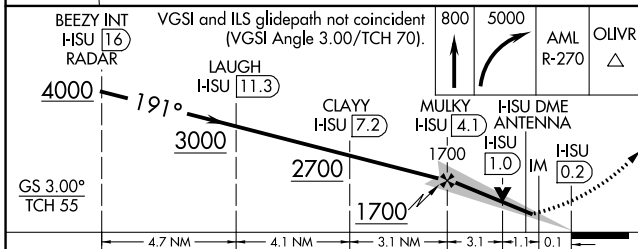
WASHINGTON DULLES INTL (IAD)

**Simultaneous approach authorized with ILS or LOC/DME** ALSF-2  
**Rwy 19C, ILS Rwy 19C (Cat II), ILS Rwy 19C (Cat III), Rwy 19L.** MISSED APPROACH: Climb to 800 then climbing right turn to 5000 via AML VOR/DME R-270 to OLIVR INT/AML 20 DME and hold, continue climb-in-hold to 5000.

D-ATIS <b>134.85</b>	POTOMAC APP CON <b>120.45 306.925</b> (241°-330°) <b>128.525 306.925</b> (091°-240°) <b>126.1 338.25</b> (331°-090°)	DULLES TOWER <b>120.1 317.8</b> (Rwy 1R/19L) <b>120.25 348.6</b> (Rwy 1C/19C) <b>134.425 348.6</b> (Rwys 1L/19R and 12/30)	GND CON <b>121.9 317.8</b> (EAST) <b>121.625 348.6</b> (WEST)
-------------------------	---	---	---



ELEV 312	TDZE 278
----------	----------



CATEGORY	A	B	C	D
S-ILS 19R	478/18 200 (200-½)			
S-LOC 19R	720/24 442 (500-½)	720/40 442 (500-¾)	720/50 442 (500-1)	
CIRCLING	940-1 628 (700-1)	940-1¾ 628 (700-1¾)	940-2 628 (700-2)	

TDZ/CL Rwys 1C, 1L, 1R, 12, 19C and 19R  
 REIL Rwy 30  
 HIRL all Rwys

NE-3, 15 AUG 2019 to 12 SEP 2019

NE-3, 15 AUG 2019 to 12 SEP 2019