

LOC/DME I-OIU 110.75 Chan 44 (Y)	APP CRS 011°	Rwy Idg TDZE Apt Elev	9400 296 312
---	------------------------	-----------------------------	---

I LS or LOC/DME RWY 1L

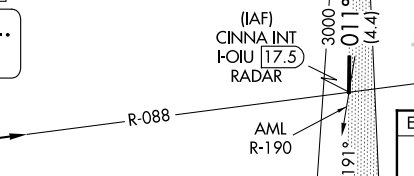
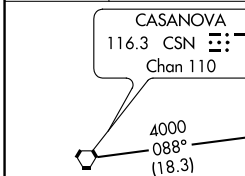
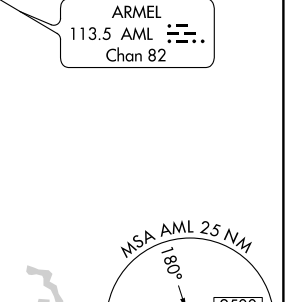
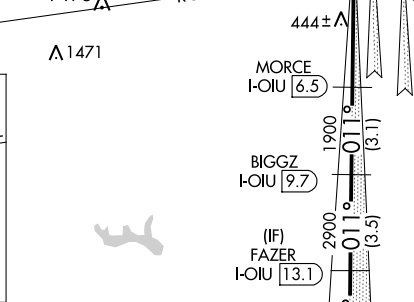
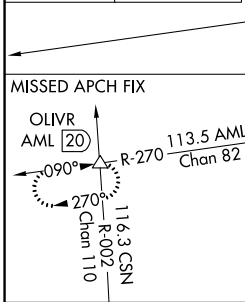
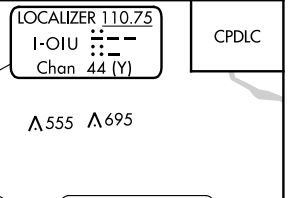
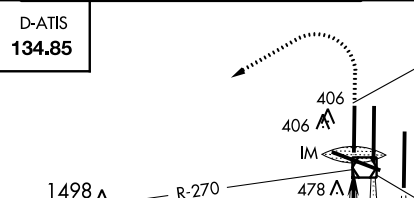
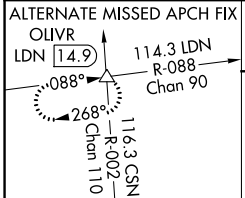
WASHINGTON DULLES INTL (IAD)

Simultaneous approach authorized with ILS or LOC/DME Rwy 1C, ILS Rwy 1C (Cat II), RNAV (GPS) Y Rwy 1C, ILS or LOC Rwy 1R, ILS Rwy 1R (Cat II), ILS Rwy 1R (Cat III), RNAV (GPS) Y Rwy 1R.

ALSF-2

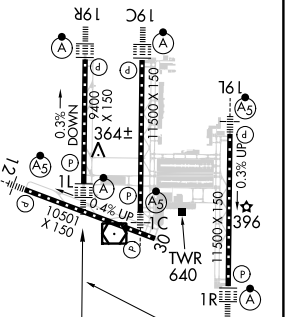
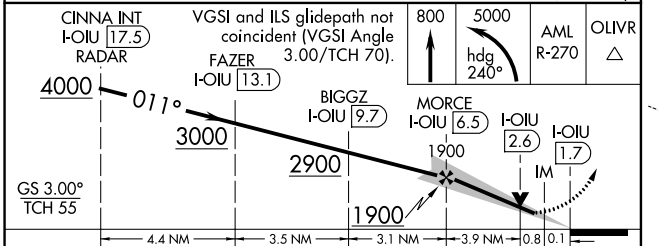
MISSED APPROACH: Climb to 800 then climbing left turn to 5000 via heading 240° and AML VOR/DME R-270 to OLVR INT/AML 20 DME and hold, continue climb-in-hold to 5000.

POTOMAC APP CON 120.45 306.925 (241°-330°) 128.525 306.925 (091°-240°) 126.1 338.25 (331°-090°)	DULLES TOWER 120.1 317.8 (Rwy 1R/19L) 120.525 348.6 (Rwy 1C/19C) 134.425 348.6 (Rwys 1L/19R and 12/30)	GND CON 121.9 317.8 (EAST) 121.625 348.6 (WEST)	CLNC DEL 135.7 317.8
---	--	---	--------------------------------



ELEV	312	TDZE	296
------	-----	------	-----

DME or RADAR REQUIRED



CINNA INT I-OIU 17.5 RADAR	VGSI and ILS glidepath not coincident (VGSI Angle FAZER 3.00/TCH 70). I-OIU 13.1	800	5000	AML R-270	OLVR
4000	3000	2900	1900	1700	
GS 3.00° TCH 55					
CATEGORY	A	B	C	D	
S-ILS 1L	496/18 200 (200-½)				
S-LOC 1L	660/24 364 (400-½)		660/40 364 (400-¾)		
CIRCLING	940-1 628 (700-1)	940-1¾ 628 (700-1¾)	940-2 628 (700-2)		

NE-3, 15 AUG 2019 to 12 SEP 2019

NE-3, 15 AUG 2019 to 12 SEP 2019