

19171
AIRPORT DIAGRAM

AL-347 (FAA)

RICHMOND INTL (RIC)
 RICHMOND, VIRGINIA

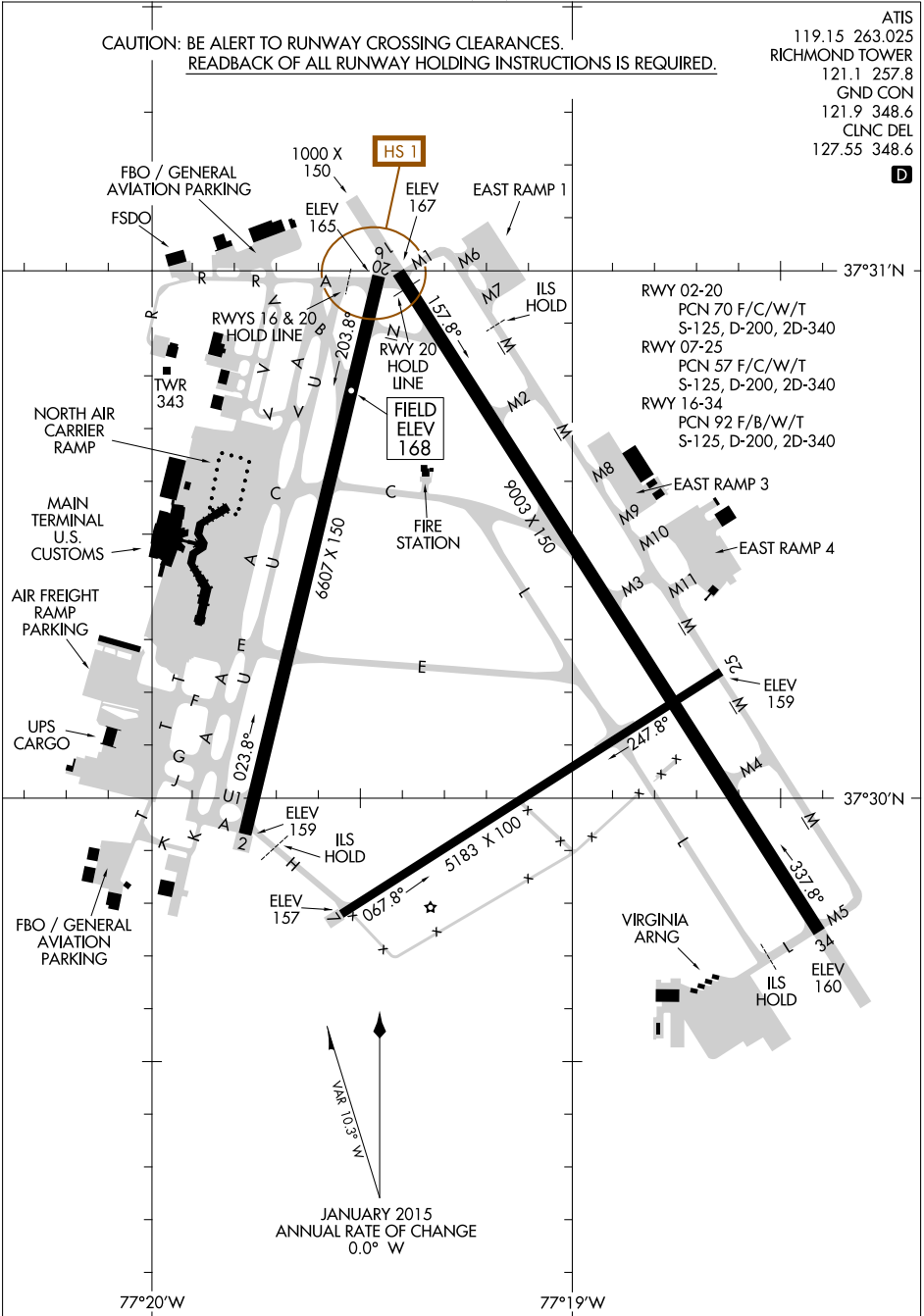
**CAUTION: BE ALERT TO RUNWAY CROSSING CLEARANCES.
 READBACK OF ALL RUNWAY HOLDING INSTRUCTIONS IS REQUIRED.**

ATIS
 119.15 263.025
 RICHMOND TOWER
 121.1 257.8
 GND CON
 121.9 348.6
 CLNC DEL
 127.55 348.6



NE-3, 10 OCT 2019 to 07 NOV 2019

NE-3, 10 OCT 2019 to 07 NOV 2019



RWY 02-20
 PCN 70 F/C/W/T
 S-125, D-200, 2D-340
 RWY 07-25
 PCN 57 F/C/W/T
 S-125, D-200, 2D-340
 RWY 16-34
 PCN 92 F/B/W/T
 S-125, D-200, 2D-340

JANUARY 2015
 ANNUAL RATE OF CHANGE
 0.0° W

AIRPORT DIAGRAM
 19171

RICHMOND, VIRGINIA
RICHMOND INTL (RIC)