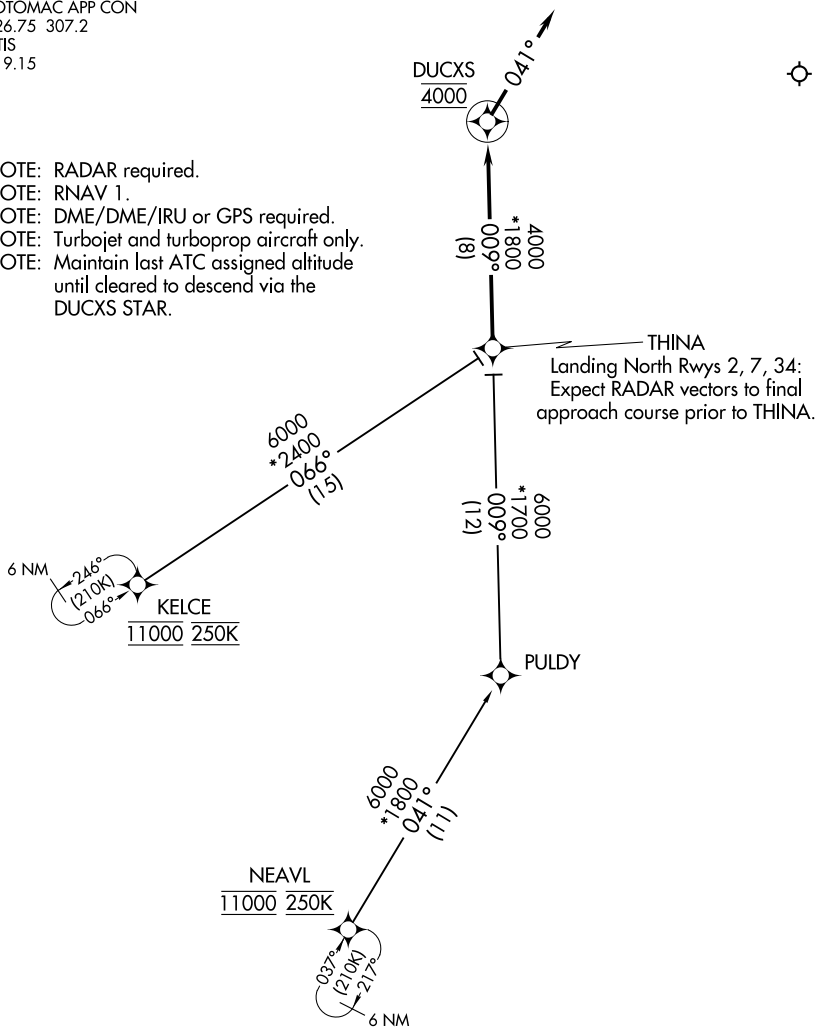


DUCXS FOUR ARRIVAL (RNAV)

POTOMAC APP CON
126.75 307.2
ATIS
119.15

- NOTE: RADAR required.
- NOTE: RNAV 1.
- NOTE: DME/DME/IRU or GPS required.
- NOTE: Turbojet and turboprop aircraft only.
- NOTE: Maintain last ATC assigned altitude until cleared to descend via the DUCXS STAR.



NOTE: Chart not to scale.

ARRIVAL ROUTE DESCRIPTION

KELCE TRANSITION (KELCE.DUCXS4):
NEAVL TRANSITION (NEAVL.DUCXS4):

From THINA on track 009° to cross DUCXS at 4000, then on heading 041° or as assigned by ATC. Expect RADAR vectors to final approach course.