

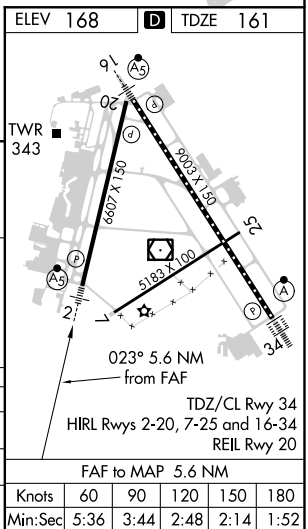
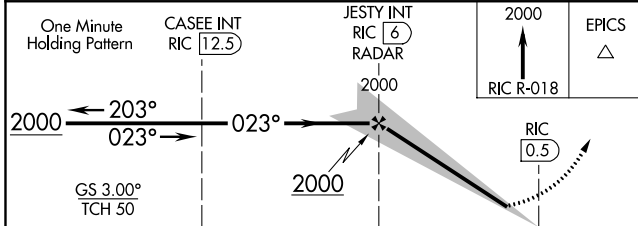
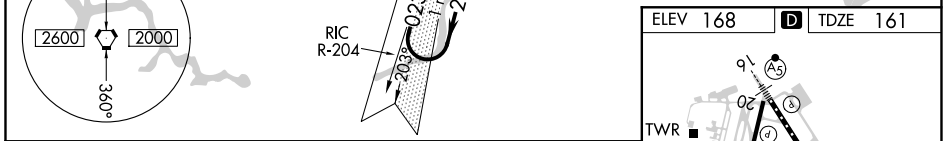
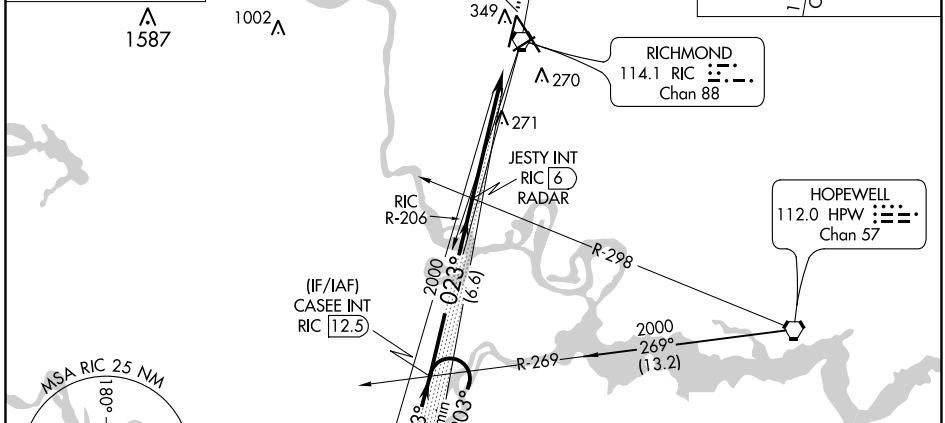
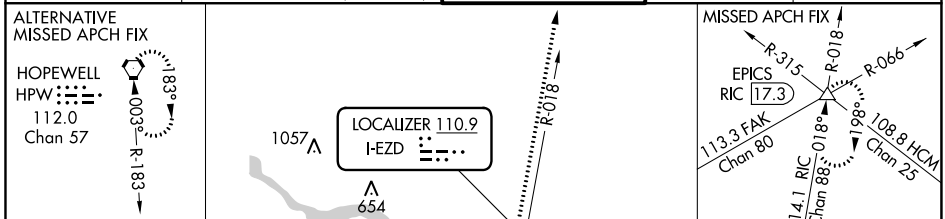
LOC I-EZD 110.9	APP CRS 023°	Rwy Idg TDZE Apt Elev	6607 161 168
---------------------------	------------------------	-----------------------------	---

ILS or LOC RWY 2

RICHMOND INTL (RIC)

<p>▼ Rwy 2 helicopter visibility reduction below 3/4 SM NA. For inop ALS, increase S-LOC 2 Cats A and B visibility to 1 SM, and Cats C and D visibility to 1 1/2 SM.</p>	<p>MALSRR</p>	<p>MISSED APPROACH: Climb to 2000 on RIC VORTAC R-018 to EPICS INT/RIC 17.3 DME and hold.</p>
---	---------------	---

<p>ATIS 119.15 263.025</p>	<p>POTOMAC APP CON 126.4 282.375 (001°-185°) 126.75 307.2 (186°-360°)</p>	<p>RICHMOND TOWER 121.1 257.8</p>	<p>GND CON 121.9 348.6</p>	<p>CLNC DEL 127.55 348.6</p>
---------------------------------------	---	--	---------------------------------------	---



CATEGORY	A	B	C	D
S-ILS 2		457-3/4	296 (300-3/4)	
S-LOC 2		540-3/4	379 (400-3/4)	
C CIRCLING	660-1	492 (500-1)	700-1 1/2 532 (600-1 1/2)	720-2 552 (600-2)

FAF to MAP 5.6 NM					
Knots	60	90	120	150	180
Min:Sec	5:36	3:44	2:48	2:14	1:52