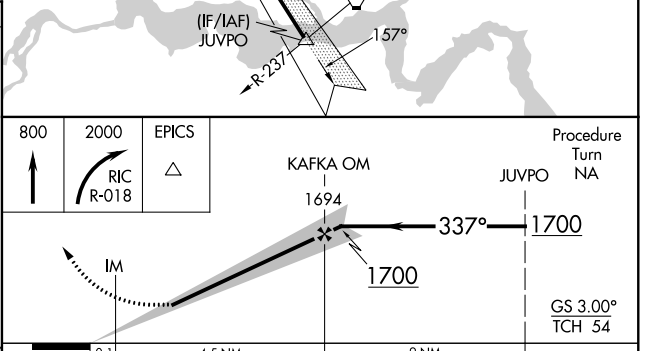
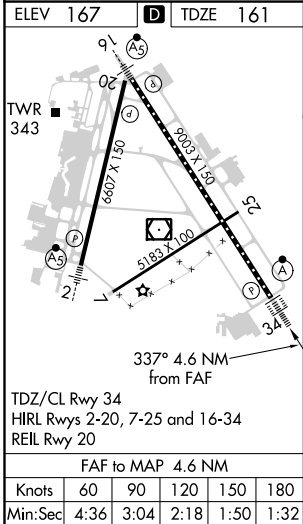
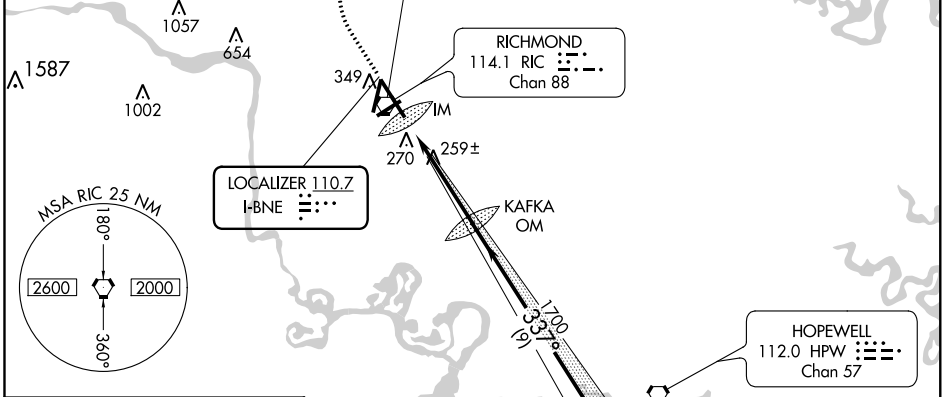
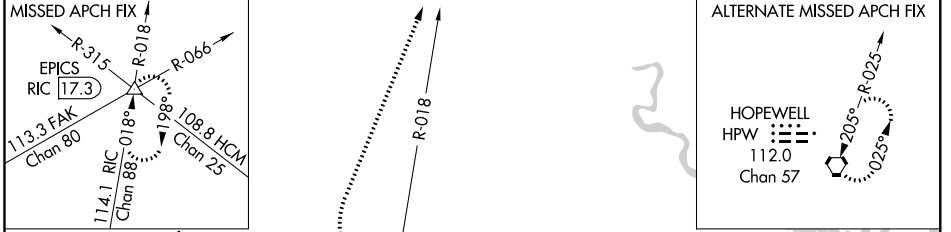


LOC I-BNE <b>110.7</b>	APP CRS <b>337°</b>	Rwy Idg TDZE Apt Elev	<b>9003</b> <b>161</b> <b>167</b>
---------------------------	------------------------	-----------------------------	-----------------------------------------

# ILS or LOC RWY 34

RICHMOND INTL (RIC)

For inoperative ALSF-2, increase S-ILS 34 Cat E visibility to RVR 4000 and S-LOC 34 Cats C, D, and E visibility to RVR 5500.		ALSF-2 	MISSED APPROACH: Climb to 800 then climbing right turn to 2000 via RIC VORTAC R-018 to EPICS INT/RIC 17.3 DME and hold.	
ATIS <b>119.15 263.025</b>	POTOMAC APP CON <b>126.4 282.375</b> (001°-185°) <b>126.75 307.2</b> (186°-360°)	RICHMOND TOWER <b>121.1 257.8</b>	GND CON <b>121.9 348.6</b>	CLNC DEL <b>127.55 348.6</b>



CATEGORY	A	B	C	D	E
S-ILS 34	361/18		200 (200-½)		361/24 200 (200-½)
S-LOC 34	520/24	359 (400-½)	520/30 359 (400-¾)		
CIRCLING	660-1 493 (500-1)		660-1½ 493 (500-1½)	720-2 553 (600-2)	740-2 573 (600-2)

NE-3, 10 OCT 2019 to 07 NOV 2019

NE-3, 10 OCT 2019 to 07 NOV 2019