

KALLI FIVE DEPARTURE (RNAV)

TOP ALTITUDE:
5000

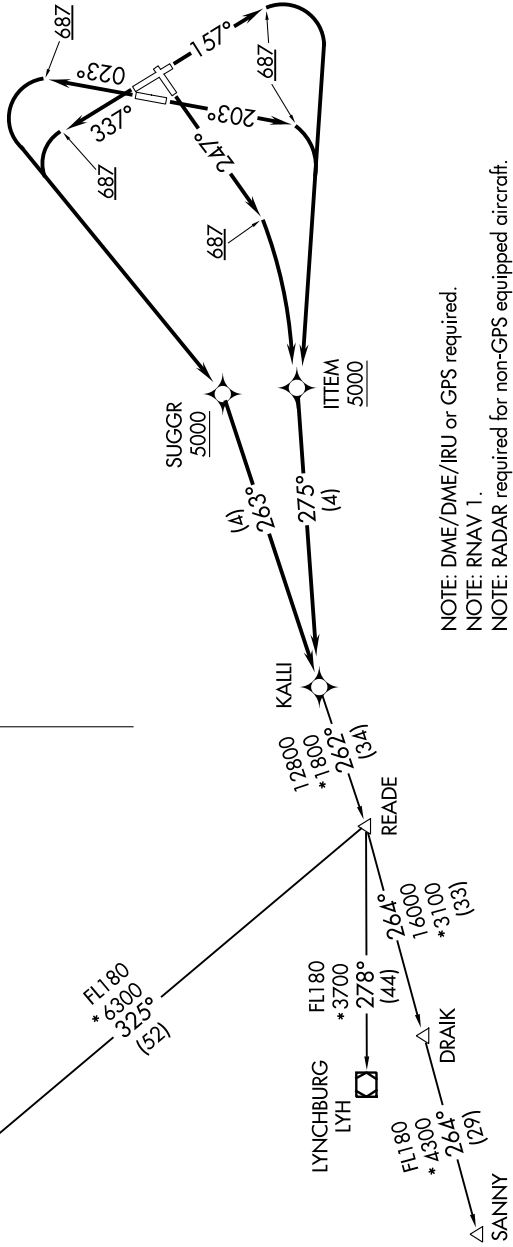
TAKEOFF MINIMUMS

Rwys 2, 16, 20, 25, 34: Standard with minimum climb of 500' per NM to 687.

Rwy 7: NA-ATC.

ATIS 119.15 263.025
CLNC DEL 127.55 348.6
GND CON 121.9 348.6
RICHMOND TOWER 121.1 257.8
POTOMAC DEP CON 126.75 307.2

MONTEBELLO
MOL



NOTE: DME/DME/IRU or GPS required.
NOTE: RNAV 1.
NOTE: RADAR required for non-GPS equipped aircraft.

NOTE: Chart not to scale.

(NARRATIVE ON FOLLOWING PAGE)

KALLI FIVE DEPARTURE (RNAV)

(KALLI5.KALLI) 03JAN19