

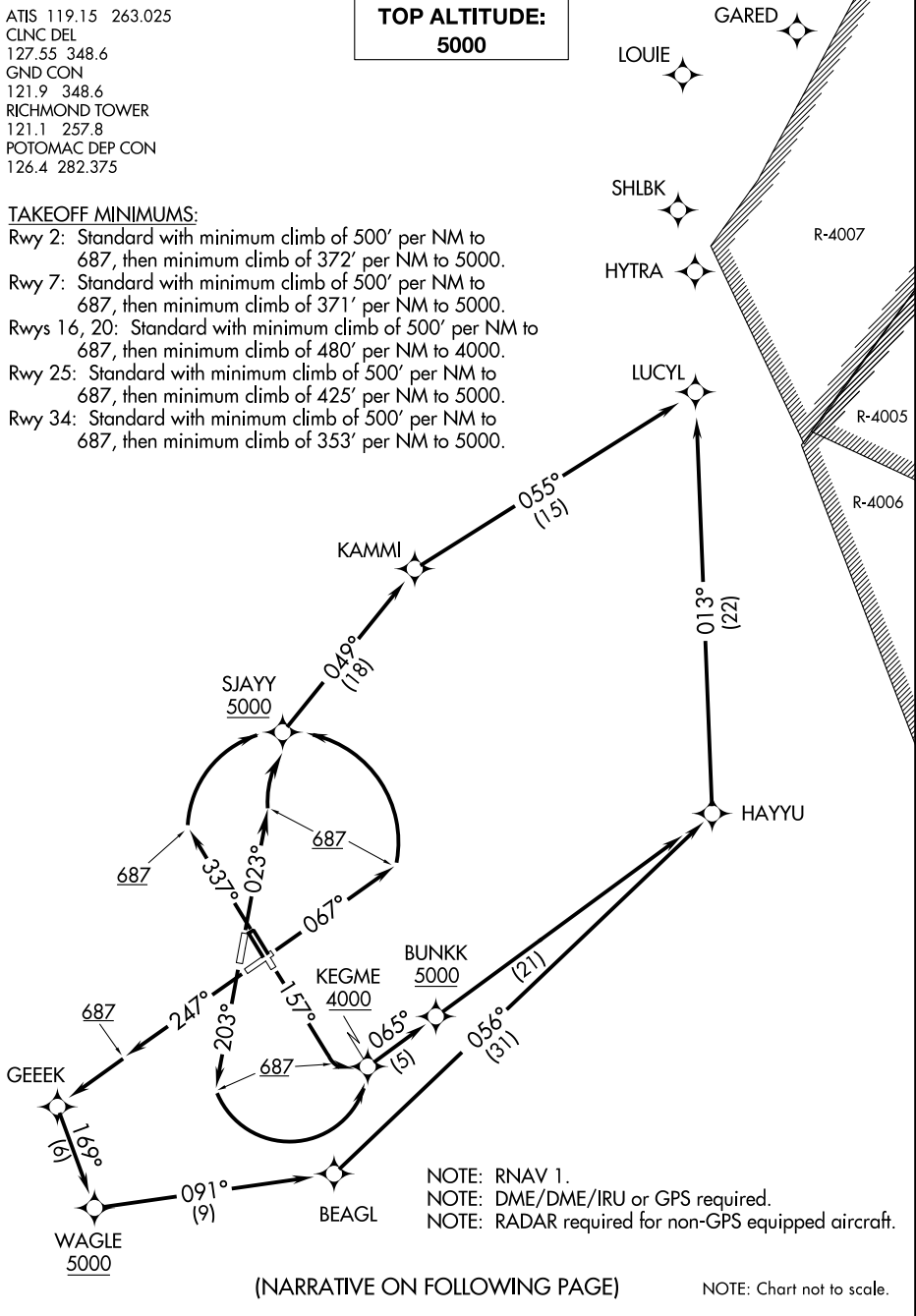
# LUCYL FIVE DEPARTURE (RNAV)

ATIS 119.15 263.025  
CLNC DEL  
127.55 348.6  
GND CON  
121.9 348.6  
RICHMOND TOWER  
121.1 257.8  
POTOMAC DEP CON  
126.4 282.375

**TOP ALTITUDE:  
5000**

### TAKEOFF MINIMUMS:

- Rwy 2: Standard with minimum climb of 500' per NM to 687, then minimum climb of 372' per NM to 5000.
- Rwy 7: Standard with minimum climb of 500' per NM to 687, then minimum climb of 371' per NM to 5000.
- Rwys 16, 20: Standard with minimum climb of 500' per NM to 687, then minimum climb of 480' per NM to 4000.
- Rwy 25: Standard with minimum climb of 500' per NM to 687, then minimum climb of 425' per NM to 5000.
- Rwy 34: Standard with minimum climb of 500' per NM to 687, then minimum climb of 353' per NM to 5000.



NE-3, 10 OCT 2019 to 07 NOV 2019

NE-3, 10 OCT 2019 to 07 NOV 2019

(NARRATIVE ON FOLLOWING PAGE)

NOTE: Chart not to scale.

# LUCYL FIVE DEPARTURE (RNAV)