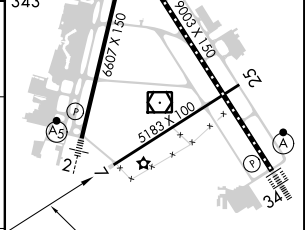
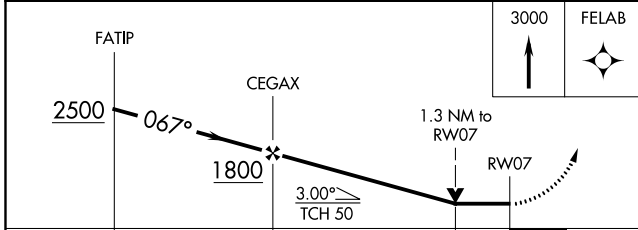
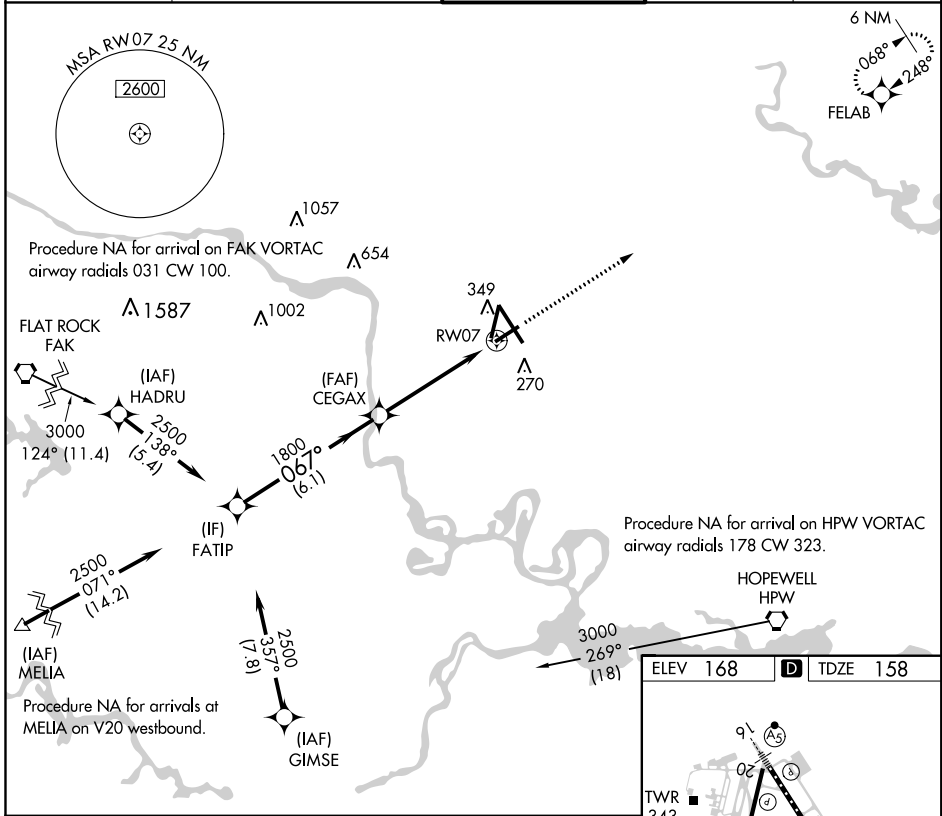


APP CRS	Rwy Idg	5183
067°	TDZE	158
	Apt Elev	168

RNAV (GPS) RWY 7

RICHMOND INTL (RIC)

RNP APCH		MISSED APPROACH: Climb to 3000 direct FELAB and hold.			
<p>▼ Rwy 7 helicopter visibility reduction below 3/4 SM NA.</p>					
ATIS	POTOMAC APP CON		RICHMOND TOWER	GND CON	CLNC DEL
119.15 263.025	126.4 282.375	(001°-185°) 126.75 307.2	121.1 257.8	121.9 348.6	127.55 348.6
		(186°-360°)			



	6.1 NM		3.7 NM		1.3 NM
CATEGORY	A	B	C	D	
LNVA MDA	620-1	462 (500-1)	620-1 3/8	462 (500-1 3/8)	
C CIRCLING	660-1	492 (500-1)	700-1 1/2	720-2	
			532 (600-1 1/2)	552 (600-2)	

ELEV 168	D TDZE 158
<p>TW01 91 TW02 90 TW03 89 TW04 88 TW05 87 TW06 86 TW07 85 TW08 84 TW09 83 TW10 82 TW11 81 TW12 80 TW13 79 TW14 78 TW15 77 TW16 76 TW17 75 TW18 74 TW19 73 TW20 72 TW21 71 TW22 70 TW23 69 TW24 68 TW25 67 TW26 66 TW27 65 TW28 64 TW29 63 TW30 62 TW31 61 TW32 60 TW33 59 TW34 58 TW35 57 TW36 56 TW37 55 TW38 54 TW39 53 TW40 52 TW41 51 TW42 50 TW43 49 TW44 48 TW45 47 TW46 46 TW47 45 TW48 44 TW49 43 TW50 42 TW51 41 TW52 40 TW53 39 TW54 38 TW55 37 TW56 36 TW57 35 TW58 34 TW59 33 TW60 32 TW61 31 TW62 30 TW63 29 TW64 28 TW65 27 TW66 26 TW67 25 TW68 24 TW69 23 TW70 22 TW71 21 TW72 20 TW73 19 TW74 18 TW75 17 TW76 16 TW77 15 TW78 14 TW79 13 TW80 12 TW81 11 TW82 10 TW83 9 TW84 8 TW85 7 TW86 6 TW87 5 TW88 4 TW89 3 TW90 2 TW91 1 TW92 0 TW93 0 TW94 0 TW95 0 TW96 0 TW97 0 TW98 0 TW99 0 TW100 0</p>	
<p>TDZ/CL Rwy 34 HIRL Rwy 2-20, 7-25 and 16-34 REIL Rwy 20</p>	

NE-3, 10 OCT 2019 to 07 NOV 2019

NE-3, 10 OCT 2019 to 07 NOV 2019