


APP CRS	Rwy Idg	<b>9003</b>
<b>157°</b>	TDZE	<b>167</b>
	Apt Elev	<b>168</b>

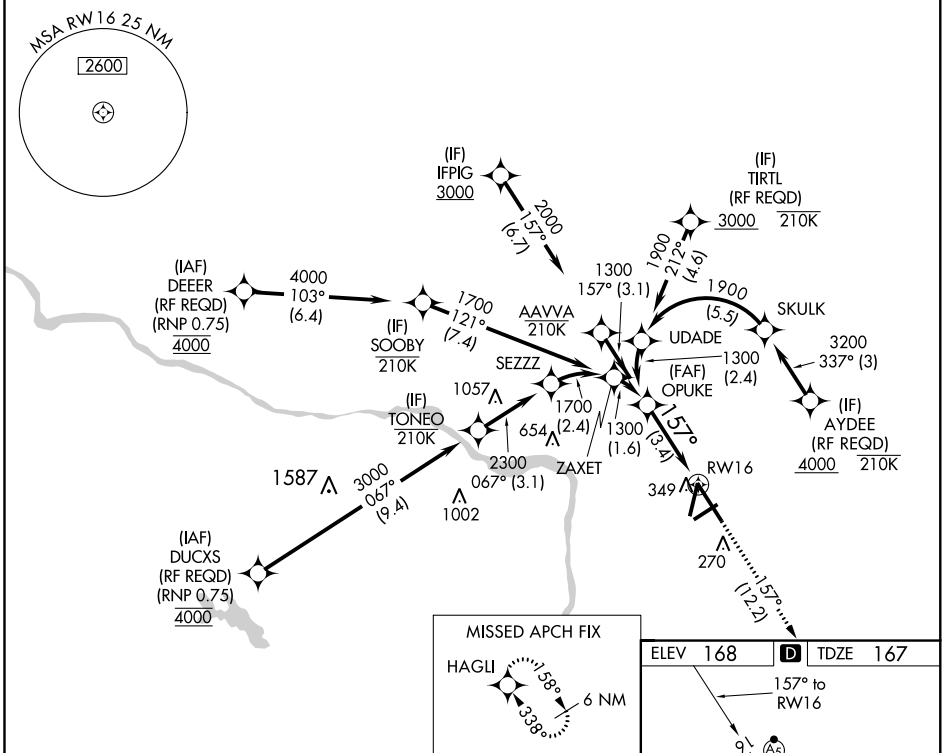
# RNAV (RNP) Y RWY 16

RICHMOND INTL (RIC)

**RNP AR APCH**  
 For uncompensated Baro-VNAV systems, procedure NA below -11°C (13°F) or above 54°C (130°F). For inop ALS, increase RNP 0.11 all Cats visibility to RVR 5500 and RNP 0.30 all Cats visibility to 1½ SM.

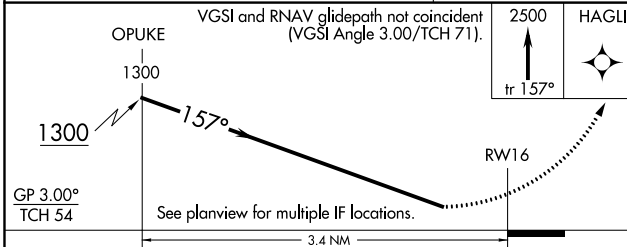
**MALSR**  
  
**MISSED APPROACH:**  
 Climb to 2500 on track  
 157° to HAGLI and hold.

ATIS	POTOMAC APP CON	RICHMOND TOWER	GND CON	CLNC DEL
<b>119.15 263.025</b>	<b>126.4 282.375</b> (001°-185°) <b>126.75 307.2</b> (186°-360°)	<b>121.1 257.8</b>	<b>121.9 348.6</b>	<b>127.55 348.6</b>

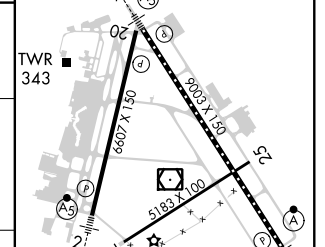


NE-3, 10 OCT 2019 to 07 NOV 2019

NE-3, 10 OCT 2019 to 07 NOV 2019



ELEV	168	<b>D</b>	TDZE	167
------	-----	----------	------	-----



CATEGORY	A	B	C	D
RNP 0.11 DA		506/40	339 (400-¾)	
RNP 0.30 DA		606/50	439 (500-1)	

TDZ/CL Rwy 34  
 HIRL Rwy 2-20, 7-25 and 16-34  
 REIL Rwy 20

## AUTHORIZATION REQUIRED