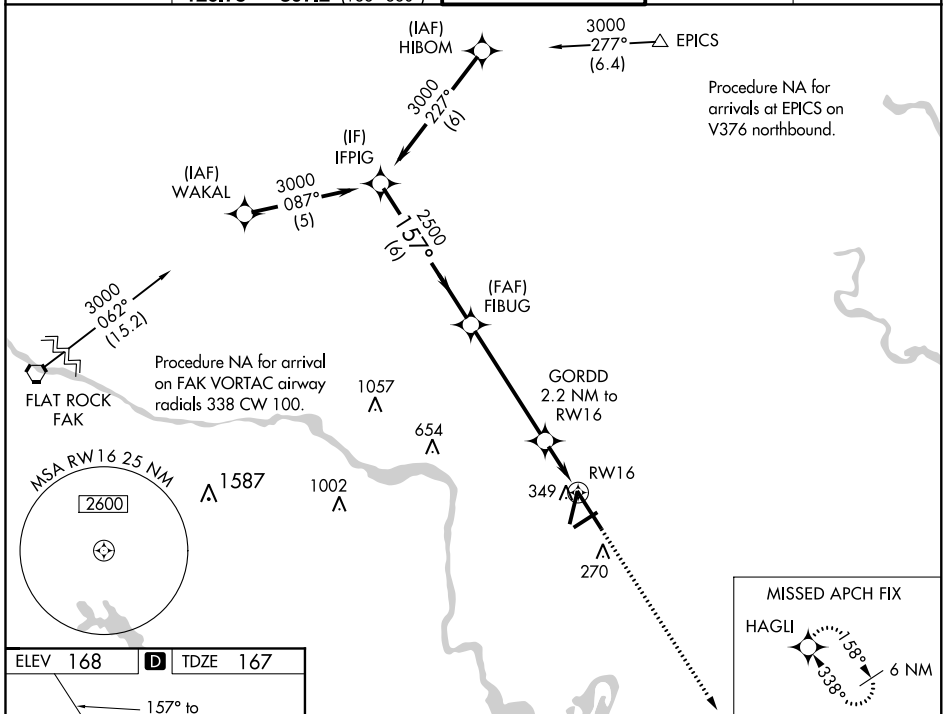


WAAS CH 72720 W16A	APP CRS 157°	Rwy Idg TDZE Apt Elev	9003 167 168
--	------------------------	-----------------------------	---

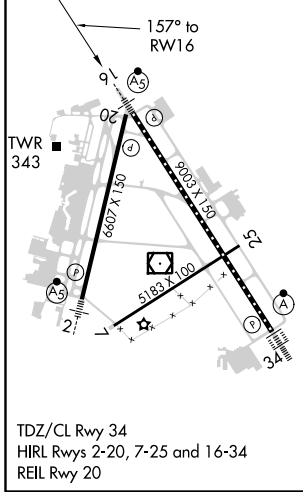
RNAV (GPS) Z RWY 16

RICHMOND INTL (RIC)

RNP APCH: ▼ For uncompensated Baro-VNAV systems, LNAV/VNAV NA below -11°C (13°F) or above 54°C (130°F). For inop ALS increase LNAV/VNAV all Cats visibility to RVR 5400. ** RVR 1800 authorized with use of FD or AP or HUD to DA.		MALSR 	MISSED APPROACH: Climb to 2500 direct HAGLI and hold.	
ATIS 119.15 263.025	POTOMAC APP CON 126.4 282.375 (001°-185°) 126.75 307.2 (186°-360°)	RICHMOND TOWER 121.1 257.8	GND CON 121.9 348.6	CLNC DEL 127.55 348.6



ELEV 168	D TDZE 167
----------	-------------------



	VGSi and RNAV glidepath not coincident (VGSi Angle 3.00/TCH 71).			2500	HAGLI
	IFPIG	FIBUG	GORDD	2.2 NM to RWY 16	
	3000	2500	920*	*1.2 NM to RWY 16	
	GP 3.00° TCH 54				
	6 NM	5 NM	1 NM	1.2 NM	
CATEGORY	A	B	C	D	
LPV DA **	367/24 200 (200-½)				
LNAV/VNAV DA	504/31 337 (400-¾)				
LNAV MDA	600/24	433 (500-½)	600/40	433 (500-¾)	
C CIRCLING	660-1	492 (500-1)	700-1½ 532 (600-1½)	720-2 552 (600-2)	

*LNAV only.

NE-3, 10 OCT 2019 to 07 NOV 2019

NE-3, 10 OCT 2019 to 07 NOV 2019