

# SPIDR THREE ARRIVAL (RNAV)

NE-3, 10 OCT 2019 to 07 NOV 2019

POTOMAC APP CON  
126.75 307.2  
ATIS  
119.15

MONTEBELLO  
MOL



ARRIVAL ROUTE DESCRIPTION  
MONTEBELLO TRANSITION (MOL.SPIDR3)  
LANDING NORTH RWYS 2, 7, 34: From SPIDR on track 149° to DUCXS, then on heading 151° or as assigned by ATC. Expect RADAR vectors to final approach course.  
LANDING SOUTH RWYS 16, 20, 25: From SPIDR on track 105° to DEEER, then on heading 081° or as assigned by ATC. Expect RADAR vectors to final approach course.

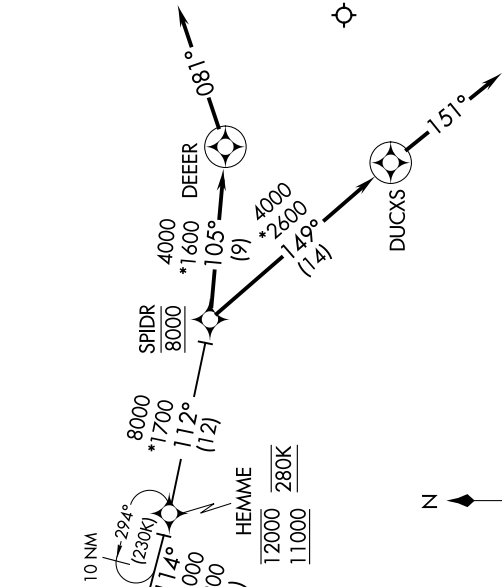
NOTE: RADAR required.

NOTE: RNAV 1.

NOTE: DME/DME/IRU or GPS required.

NOTE: Turbojet aircraft only.

NOTE: Maintain last ATC assigned altitude until cleared to "descend via the SPIDR STAR".  
ARTCC will issue landing direction assignment (north or south) and Potomac TRACON will issue runway assignments.



NOTE: Chart not to scale.

# SPIDR THREE ARRIVAL (RNAV)

NE-3, 10 OCT 2019 to 07 NOV 2019