

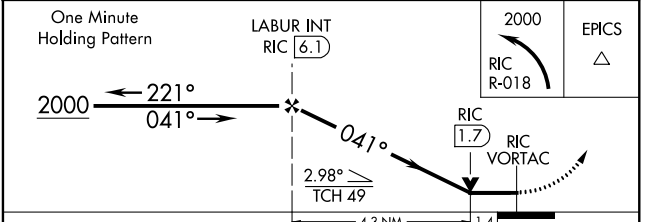
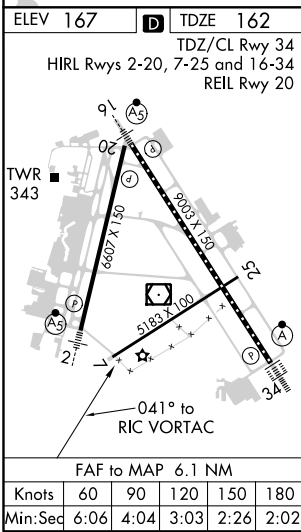
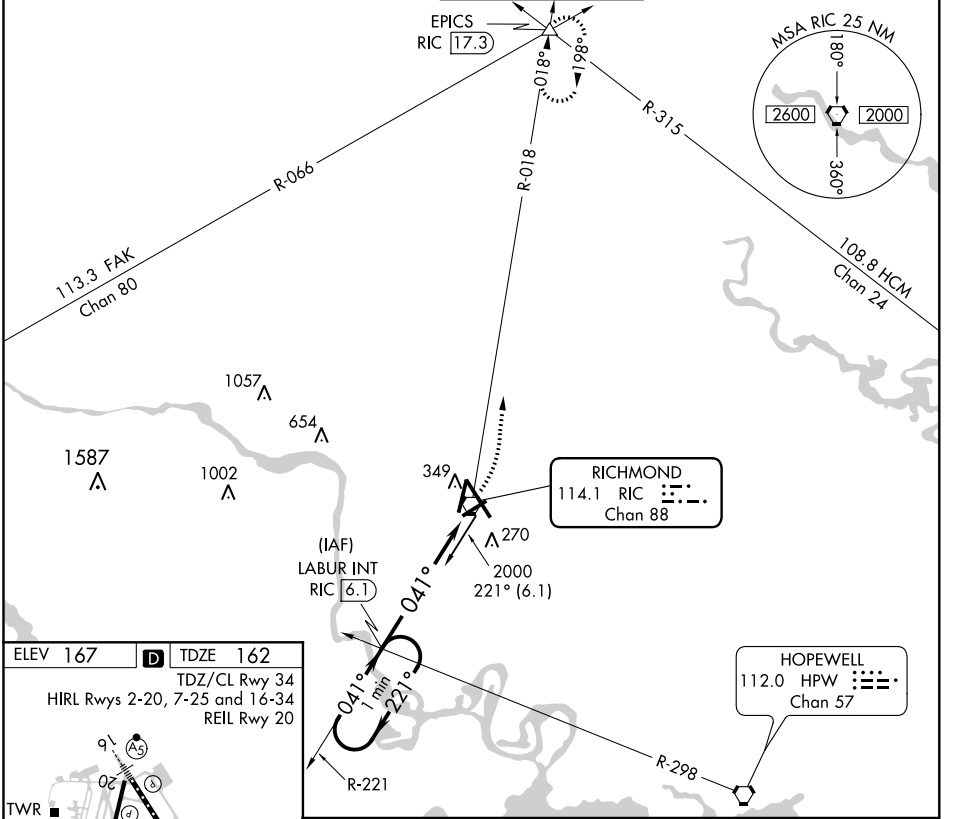
VORTAC RIC <b>114.1</b> Chan <b>88</b>	APP CRS <b>041°</b>	Rwy Idg TDZE <b>162</b> Apt Elev <b>167</b>	<b>6607</b>
--	------------------------	---	-------------

# VOR RWY 2

RICHMOND INTL (RIC)

<p>For inoperative MALSR, increase S-2 Cats A and B visibility to 1 mile, and Cats C and D visibility to 1/2 mile. Helicopter visibility reduction below 3/4 SM NA.</p>	<p>MALSR</p>	<p>MISSED APPROACH: Climbing left turn to 2000 on RIC VORTAC R-018 to EPICS INT/RIC 17.3 DME and hold.</p>
---	--------------	--

<p>ATIS <b>119.15 263.025</b></p>	<p>POTOMAC APP CON <b>126.4 282.375</b> (001°-185°) <b>126.75 307.2</b> (186°-360°)</p>	<p>RICHMOND TOWER <b>121.1 257.8</b></p>	<p>GND CON <b>121.9 348.6</b></p>	<p>CLNC DEL <b>127.55 348.6</b></p>
---------------------------------------	---	--	---------------------------------------	---



CATEGORY	A	B	C	D
S-2	640-3/4	478 (500-3/4)	640-1	478 (500-1)
CIRCLING	660-1	493 (500-1)	660-1 1/2 493 (500-1 1/2)	720-2 553 (600-2)

NE-3, 10 OCT 2019 to 07 NOV 2019

NE-3, 10 OCT 2019 to 07 NOV 2019