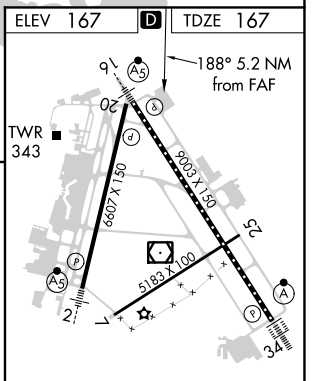
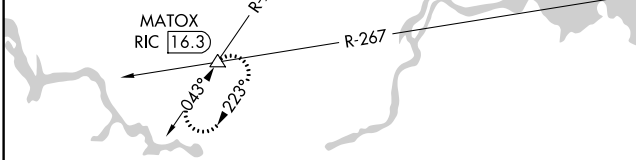
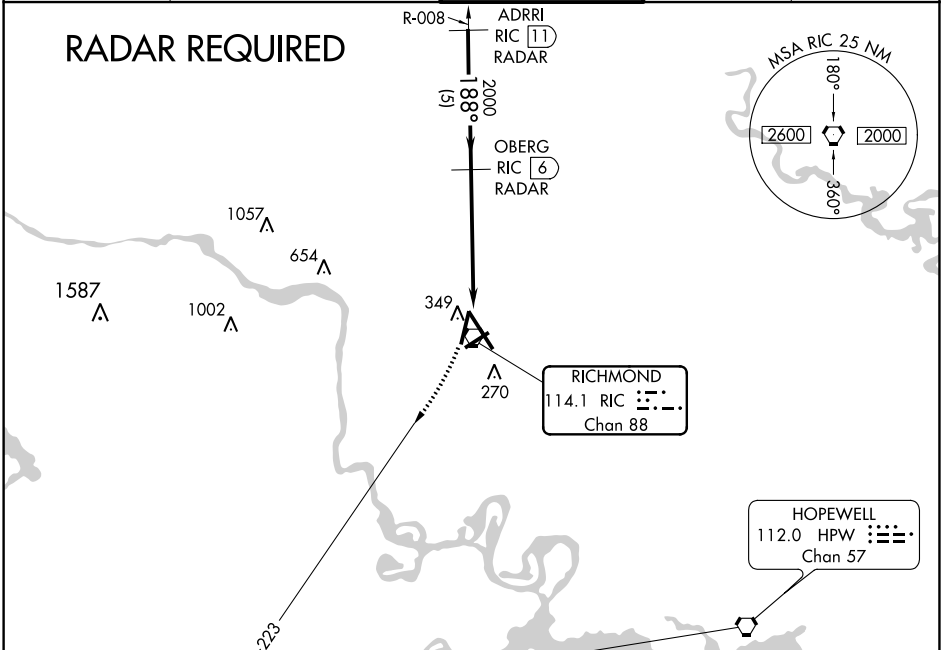


VORTAC RIC <b>114.1</b> Chan <b>88</b>	APP CRS <b>188°</b>	Rwy Idg TDZE <b>167</b> Apt Elev <b>167</b>	<b>6607</b>
--	------------------------	---	-------------

# VOR RWY 20

RICHMOND INTL (RIC)

<p><b>▼ DME or RADAR REQUIRED.</b> Visibility reduction by helicopters NA.</p>		<p>MISSED APPROACH: Climbing right turn to 2000 via RIC R-223 to MATOX INT/ RIC 16.3 DME and hold.</p>		
<p>ATIS <b>119.15 263.025</b></p>	<p>POTOMAC APP CON <b>126.4 282.375</b> (001°-185°) <b>126.75 307.2</b> (186°-360°)</p>	<p>RICHMOND TOWER <b>121.1 257.8</b></p>	<p>GND CON <b>121.9 348.6</b></p>	<p>CLNC DEL <b>127.55 348.6</b></p>



2000	MATOX	VGSIs and descent angles not coincident (VGSIs Angle 3.00/TCH 49).		
RIC R-223	△	OBERG RIC (6) RADAR	ADRI RIC (11) RADAR	2000
CATEGORY	A	B	C	D
S-20	640-1	473 (500-1)	640-1¼ 473 (500-1¼)	640-1½ 473 (500-1½)
CIRCLING	660-1	493 (500-1)	660-1½ 493 (500-1½)	720-2 553 (600-2)
TDZ/CL Rwy 34 HIRL Rwys 2-20, 7-25 and 16-34 REIL Rwy 20				
FAF to MAP 5.2 NM				
Knots	60	90	120	150
Min:Sec	5:12	3:28	2:36	2:05
			1:44	

NE-3, 10 OCT 2019 to 07 NOV 2019

NE-3, 10 OCT 2019 to 07 NOV 2019