

VORTAC RIC <b>114.1</b> Chan <b>88</b>	APP CRS <b>254°</b>	Rwy Idg TDZE <b>160</b> Apt Elev <b>167</b>	<b>5183</b>
--	------------------------	---	-------------

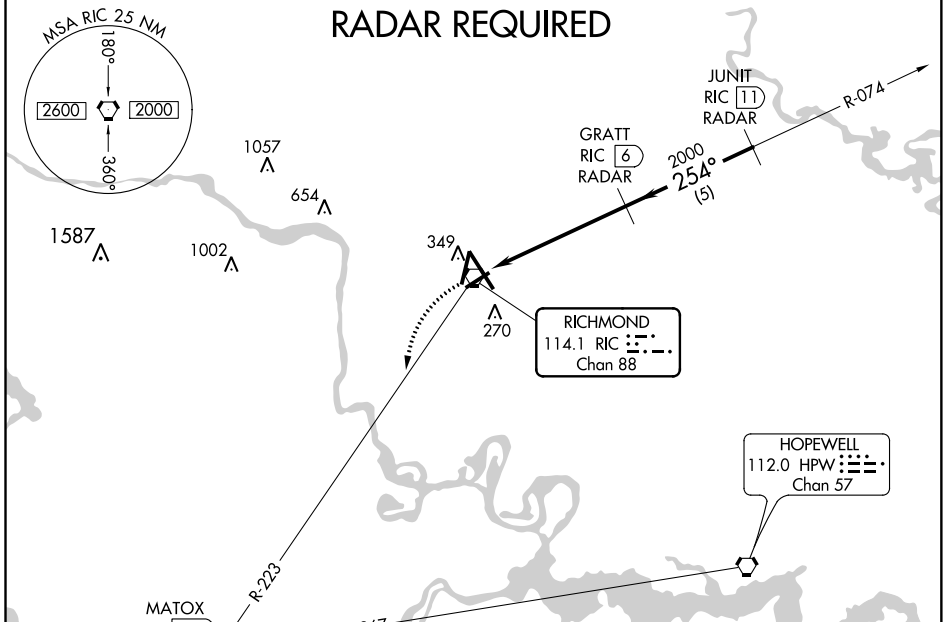
# VOR RWY 25

RICHMOND INTL (RIC)

**▼** DME or RADAR REQUIRED. Visibility reduction by helicopters NA. MISSED APPROACH: Climbing left turn to 2000 via RIC R-223 to MATOX INT and hold.

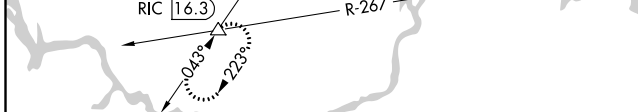
ATIS <b>119.15 263.025</b>	POTOMAC APP CON <b>126.4 282.375</b> (001°-185°) <b>126.75 307.2</b> (186°-360°)	RICHMOND TOWER <b>121.1 257.8</b>	GND CON <b>121.9 348.6</b>	CLNC DEL <b>127.55 348.6</b>
-------------------------------	--	--------------------------------------	-------------------------------	---------------------------------

## RADAR REQUIRED

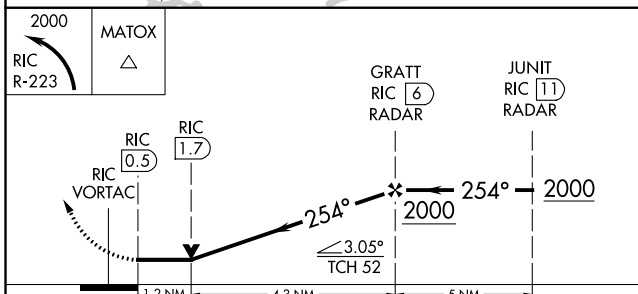
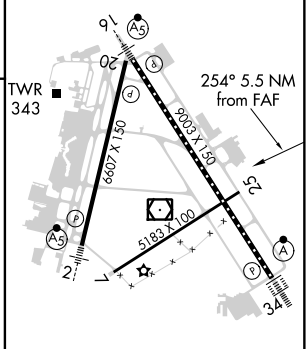


NE-3, 10 OCT 2019 to 07 NOV 2019

NE-3, 10 OCT 2019 to 07 NOV 2019



ELEV 167	<b>D</b>	TDZE 160
----------	----------	----------



CATEGORY	A	B	C	D
S-25	600-1 440 (500-1)		600-1¼ 440 (500-1¼)	600-1½ 440 (500-1½)
CIRCLING	660-1 493 (500-1)		660-1½ 493 (500-1½)	720-2 553 (600-2)

FAF to MAP 5.5 NM					
Knots	60	90	120	150	180
Min:Sec	5:30	3:40	2:45	2:12	1:50