

LOC/DME I-ORF 109.1 Chan 28	APP CRS 047°	Rwy Idg TDZE 26 Apt Elev 27	7809
--	------------------------	---	-------------

ILS or LOC RWY 5

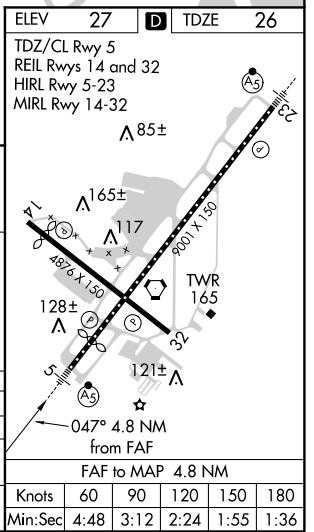
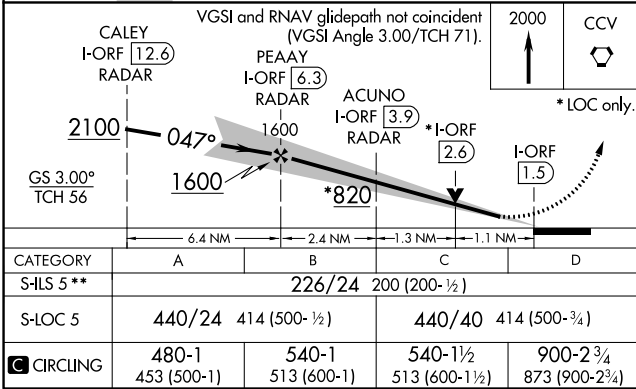
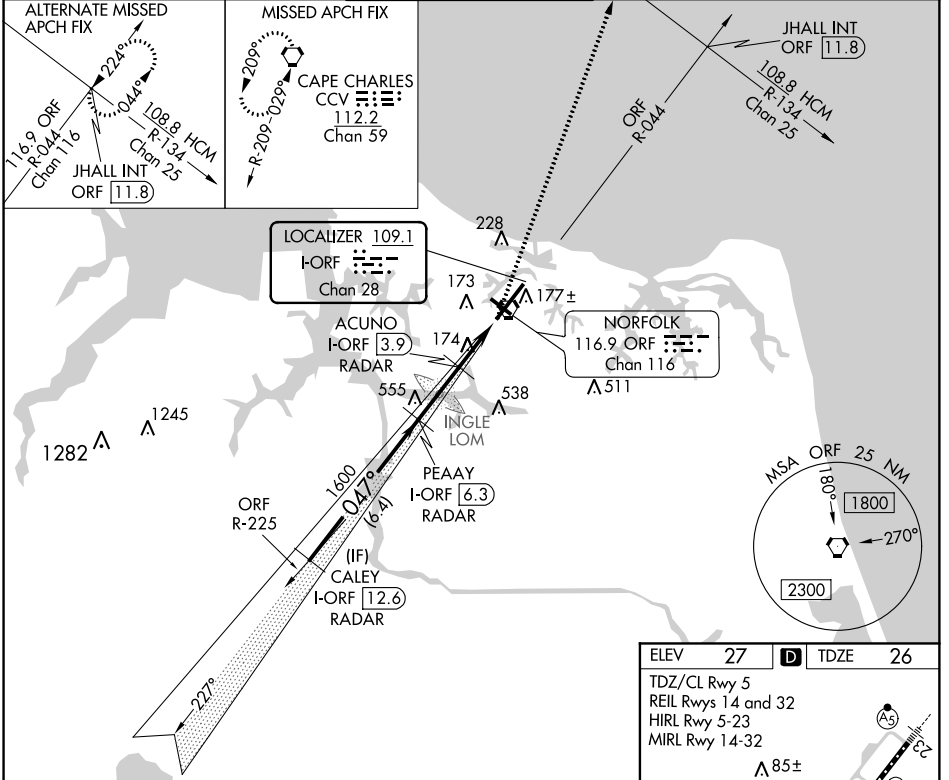
NORFOLK INTL (ORF)

DME or RADAR required. RADAR required for procedure entry.

Autopilot coupled approach NA below 744. For inop ALS, increase S-LOC 5 Cat C and D visibility to RVR 6000. ** RVR 1800 authorized with use of FD or AP or HUD to DA.

MALS R MISSED APPROACH: Climb to 2000 direct CCV VORTAC and hold.

ATIS 127.15	NORFOLK APP CON 118.9 353.7	NORFOLK TOWER 120.8 257.8	GND CON 121.9	CLNC DEL 118.5
-----------------------	---------------------------------------	-------------------------------------	-------------------------	--------------------------



CATEGORY	A	B	C	D
	S-ILS 5**	226/24		200 (200-½)
S-LOC 5	440/24	414 (500-½)	440/40	414 (500-¾)
CIRCLING	480-1	540-1	540-1½	900-2¾
	453 (500-1)	513 (600-1)	513 (600-1½)	873 (900-2¾)

NE-3, 26 MAR 2020 to 23 APR 2020

NE-3, 26 MAR 2020 to 23 APR 2020