

RNAV (GPS) RWY 32

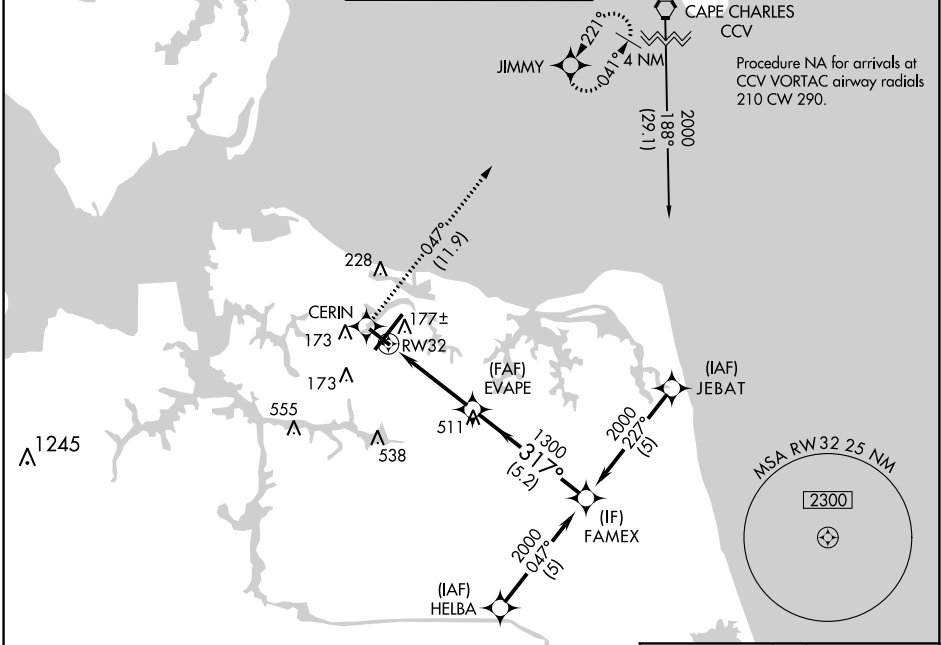
NORFOLK INTL (ORF)

APP CRS 317°	Rwy Idg TDZE Apt Elev	3900 25 27
------------------------	-----------------------------	---------------------------------------

▽ DME/DME RNP-0.3 NA. Helicopter visibility reduction below 3/4 SM NA.

MISSED APPROACH: Climb to 2000 direct CERIN and on track 047° to JIMMY and hold.

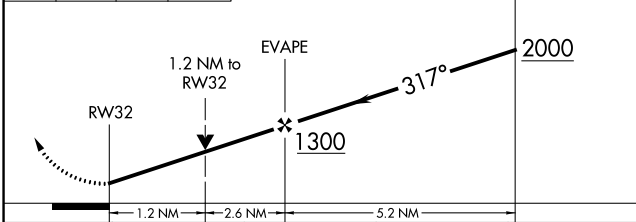
ATIS 127.15	NORFOLK APP CON 118.9 353.7	NORFOLK TOWER 120.8 257.8	GND CON 121.9	CLNC DEL 118.5
-----------------------	---------------------------------------	-------------------------------------	-------------------------	--------------------------



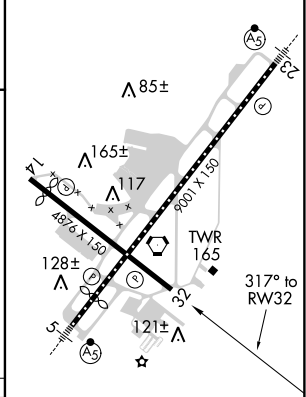
Procedure NA for arrivals at SUNNS on V139 southwest bound.

SUNNS Δ 2000 056° (23.7)

2000	CERIN	tr 047°	JIMMY	Visual Segment - Obstacles.
------	-------	---------	-------	-----------------------------



ELEV 27	D TDZE 25
---------	------------------



CATEGORY	A	B	C	D
LNVA MDA	440-1	415 (500-1)	440-1 1/8	415 (500-1 1/8)
CIRCLING	520-1	493 (500-1)	540-1 1/2	580-2
			513 (600-1 1/2)	553 (600-2)

TDZ/CL Rwy 5
REIL Rwy 14 and 32
HIRL Rwy 5-23
MIRL Rwy 14-32

NE-3, 26 MAR 2020 to 23 APR 2020

NE-3, 26 MAR 2020 to 23 APR 2020