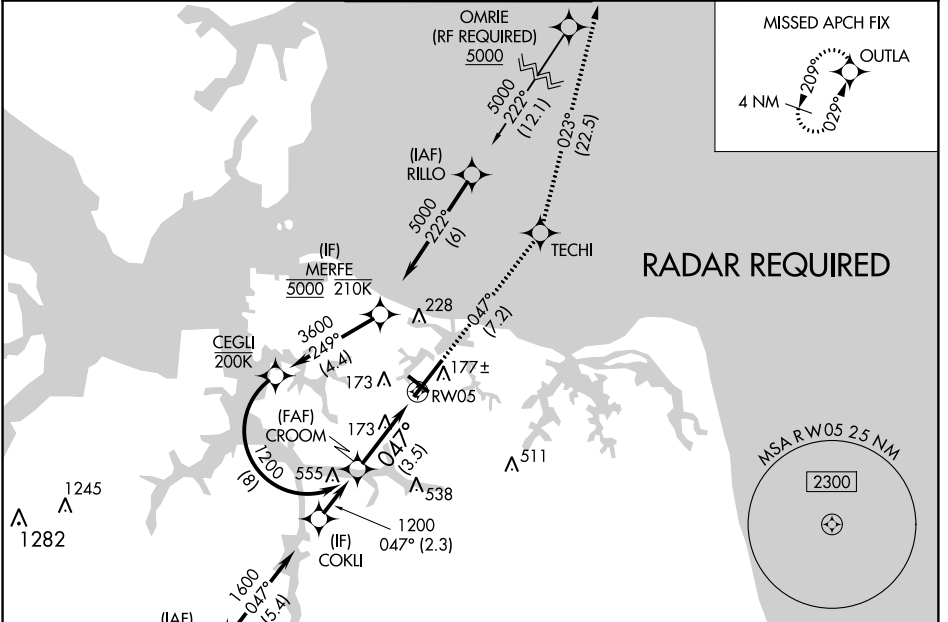


APP CRS	Rwy Idg	<b>7809</b>
<b>047°</b>	TDZE	<b>26</b>
	Apt Elev	<b>27</b>

# RNAV (RNP) Y RWY 5

NORFOLK INTL (ORF)

<p>▼ For uncompensated Baro-VNAV systems, LNAV/VNAV NA below -9°C (16°F) or above 54°C (130°F). GPS required.</p>		<p>MALSR</p>	<p>MISSED APPROACH: Climb to 2000 on track 047° to TECHI and on track 023° to OUTLA and hold.</p>	
<p>ATIS</p> <p><b>127.15</b></p>	<p>NORFOLK APP CON</p> <p><b>118.9 353.7</b></p>	<p>NORFOLK TOWER</p> <p><b>120.8 257.8</b></p>	<p>GND CON</p> <p><b>121.9</b></p>	<p>CLNC DEL</p> <p><b>118.5</b></p>



NE-3, 26 MAR 2020 to 23 APR 2020

NE-3, 26 MAR 2020 to 23 APR 2020

See planview for multiple IF locations.		2000	tr 047°	TECHI	tr 023°	OUTLA
---	--	------	---------	-------	---------	-------

<p>ELEV 27</p> <p><b>D</b> TDZE 26</p>
<p>TDZ/CL Rwy 5</p> <p>REIL Rwy 14 and 32</p> <p>HIRL Rwy 5-23</p> <p>MIRL Rwy 14-32</p>

CATEGORY	A	B	C	D
RNP 0.10 DA		350/26	324 (400-½)	
RNP 0.30 DA		454/40	428 (500-¾)	

AUTHORIZATION REQUIRED