

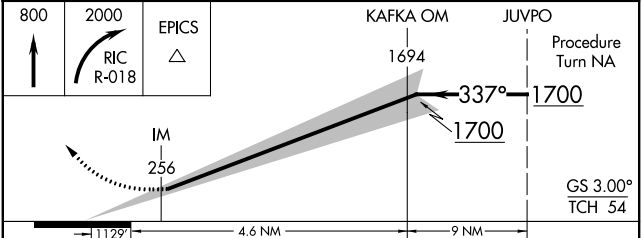
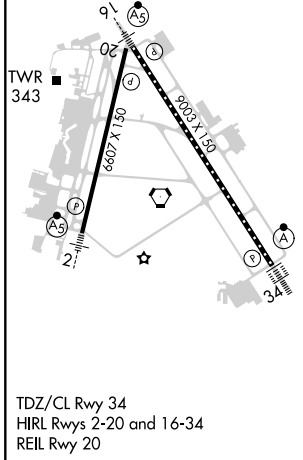
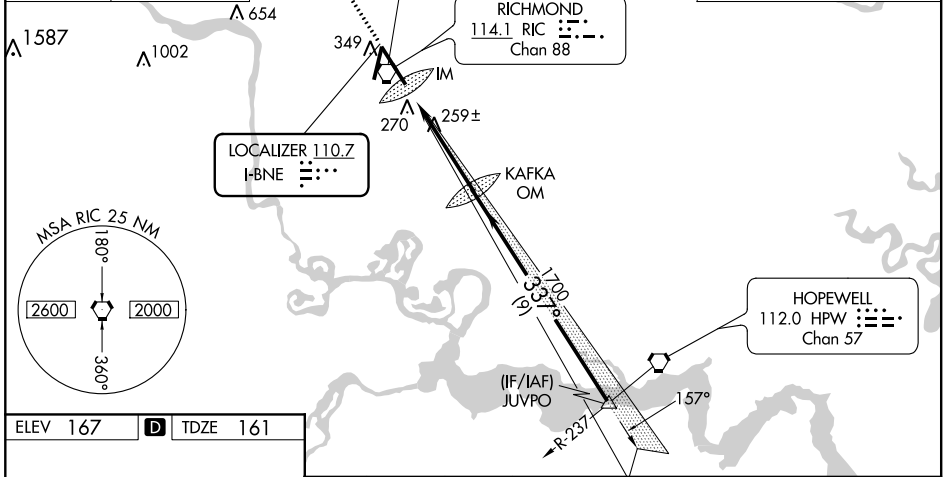
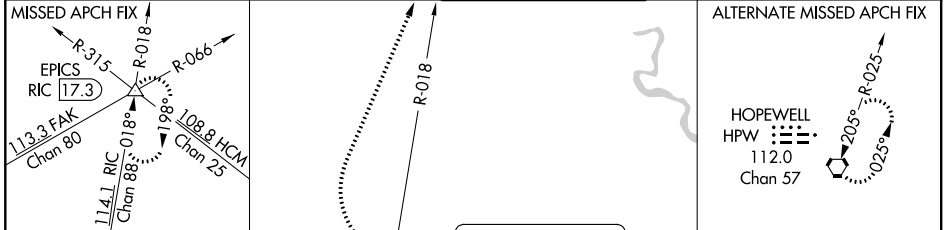
LOC I-BNE 110.7	APP CRS 337°	Rwy Idg TDZE 161 Apt Elev 167	9003
---------------------------	------------------------	---	-------------

ILS RWY 34 (CAT II & III)

RICHMOND INTL (RIC)

<p>▼ CAT II: RVR 1000 authorized with specific OPSPEC, MSPEC, or LOA approval and use of Autoland or HUD to touchdown.</p>	<p>ALSf-2</p>	<p>MISSED APPROACH: Climb to 800 then climbing right turn to 2000 via RIC VORTAC R-018 to EPICS INT/ RIC 17.3 DME and hold.</p>
---	---------------	---

<p>ATIS 119.15 263.025</p>	<p>POTOMAC APP CON 126.4 282.375 (001°-185°) 126.75 307.2 (186°-360°)</p>	<p>RICHMOND TOWER 121.1 257.8</p>	<p>GND CON 121.9 348.6</p>	<p>CLNC DEL 127.55 348.6</p>
---------------------------------------	---	--	---------------------------------------	---



CATEGORY	A	B	C	D
S-ILS 34	CAT II RA 101/12 100 DA 261			
S-ILS 34	CAT IIIa RVR 07			
S-ILS 34	CAT IIIb RVR 06			
S-ILS 34	CAT IIIc NA			

CATEGORY II & III ILS-SPECIAL AIRCREW & AIRCRAFT CERTIFICATION REQUIRED

NE-3, 26 MAR 2020 to 23 APR 2020

NE-3, 26 MAR 2020 to 23 APR 2020