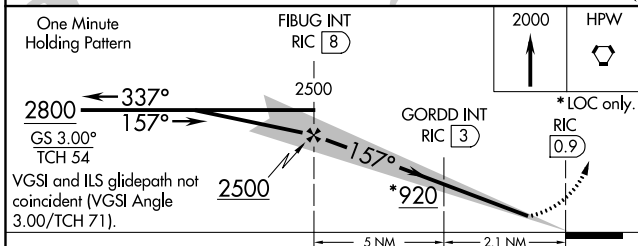
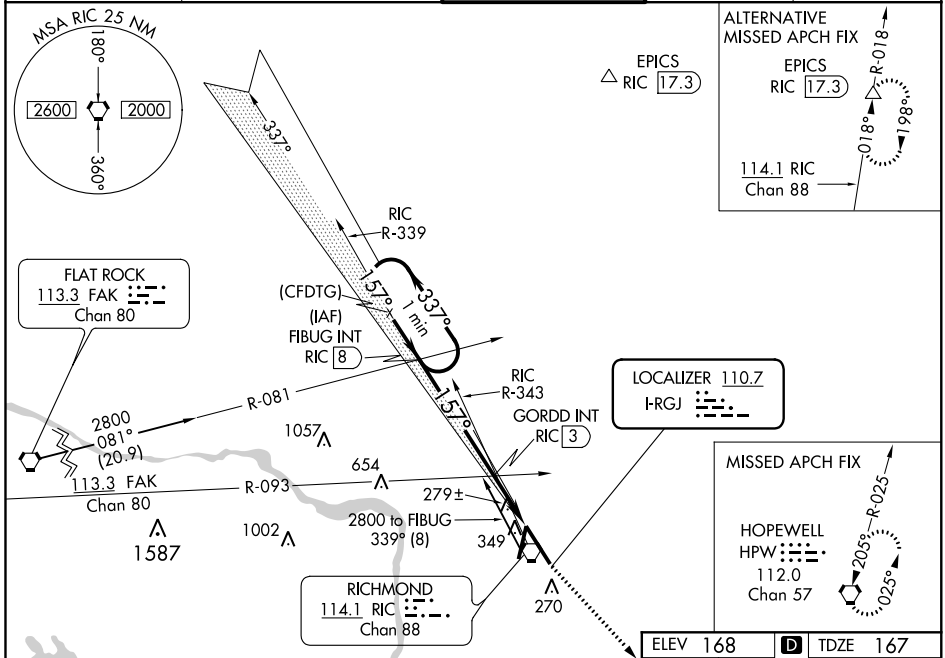


LOC I-RGJ 110.7	APP CRS 157°	Rwy Idg TDZE Apt Elev	9003 167 168
---------------------------	------------------------	-----------------------------	---

ILS or LOC RWY 16

RICHMOND INTL (RIC)

<p>▼ For inop ALS, increase S-LOC 16 Cats C and D visibility to 2 SM. GORDD Fix Minimums: for inop ALS, increase S-LOC 16 Cats C and D visibility to 1½ SM. **RVR 1800 authorized with use of FD or AP or HUD to DA. % DME from RIC VORTAC.</p>		<p>MALSR</p>	<p>MISSED APPROACH: Climb to 2000 direct HPW VORTAC and hold.</p>	
<p>ATIS 119.15 263.025</p>	<p>POTOMAC APP CON 126.4 282.375 (001°-185°) 126.75 307.2 (186°-360°)</p>	<p>RICHMOND TOWER 121.1 257.8</p>	<p>GND CON 121.9 348.6</p>	<p>CLNC DEL 127.55 348.6</p>



ELEV 168	TDZE 167
<p>TWR 343</p> <p>157° 7.2 NM from FAF</p> <p>9003 X 150</p> <p>6607 X 150</p> <p>34</p>	
<p>TDZ/CL Rwy 34</p> <p>HIRL Rvys 2-20 and 16-34</p> <p>REIL Rwy 20</p>	
<p>FAF to MAP 7.2 NM</p>	
Knots	60 90 120 150 180
Min:Sec	7:12 4:48 3:36 2:53 2:24

CATEGORY	A	B	C	D
S-ILS 16 **	367/24		200 (200-½)	
S-LOC 16	920/24 753 (800-½)	920/40 753 (800-¾)	920-1¾	753 (800-1¾)
C CIRCLING	920-1 752 (800-1)	920-1¼ 752 (800-1¼)	920-2½	752 (800-2½)
GORDD FIX MINIMUMS %				
S-LOC 16	580/24	413 (500-½)	580/40	413 (500-¾)
C CIRCLING	660-1	492 (500-1)	700-1½ 532 (600-1½)	720-2 552 (600-2)

NE-3, 26 MAR 2020 to 23 APR 2020

NE-3, 26 MAR 2020 to 23 APR 2020