


LOC I-EZD <b>110.9</b>	APP CRS <b>023°</b>	Rwy Idg TDZE Apt Elev	<b>6607</b> <b>161</b> <b>168</b>
---------------------------	------------------------	-----------------------------	---

# ILS or LOC RWY 2

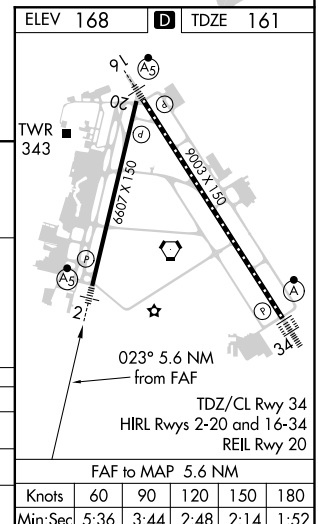
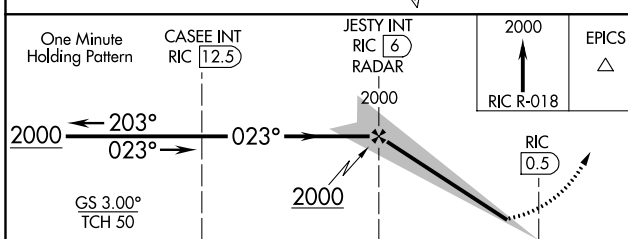
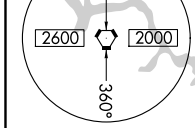
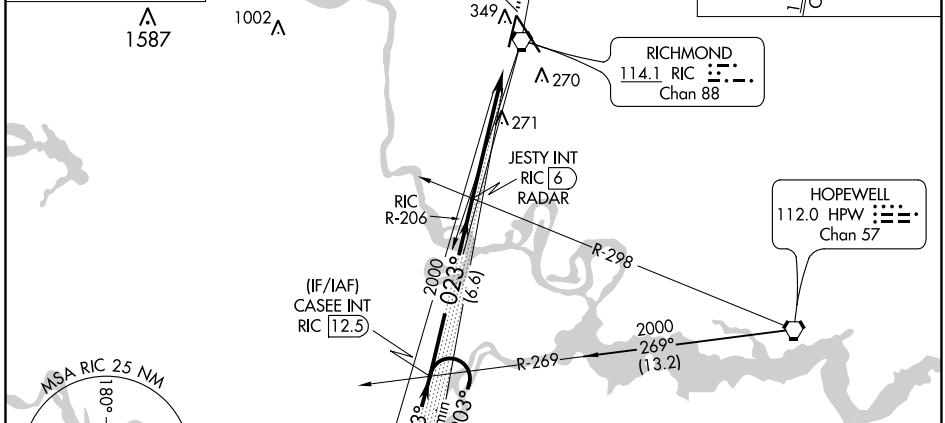
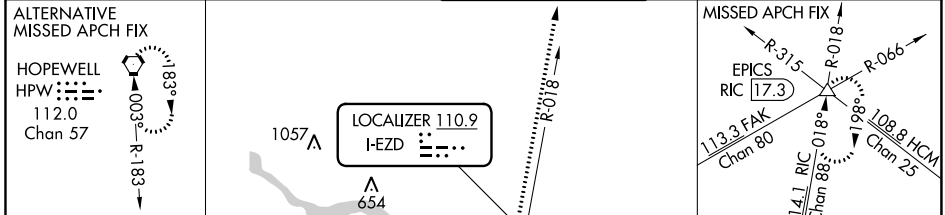
RICHMOND INTL (RIC)

**▼** Rwy 2 helicopter visibility reduction below 3/4 SM NA. For inop ALS, increase S-LOC 2 Cats A and B visibility to 1 SM, and Cats C and D visibility to 1 1/2 SM.

MALSRR 

MISSED APPROACH: Climb to 2000 on RIC VORTAC R-018 to EPICS INT/ RIC 17.3 DME and hold.

ATIS <b>119.15 263.025</b>	POTOMAC APP CON <b>126.4 282.375</b> (001°-185°) <b>126.75 307.2</b> (186°-360°)	RICHMOND TOWER <b>121.1 257.8</b>	GND CON <b>121.9 348.6</b>	CLNC DEL <b>127.55 348.6</b>
-------------------------------	--	--------------------------------------	-------------------------------	---------------------------------



CATEGORY	A	B	C	D
S-ILS 2		457-3/4	296 (300-3/4)	
S-LOC 2		540-3/4	379 (400-3/4)	
<b>C</b> CIRCLING	660-1	492 (500-1)	700-1 1/2 532 (600-1 1/2)	720-2 552 (600-2)

ELEV 168	<b>D</b> TDZE 161				
TWR 343	023° X 150				
023° 5.6 NM from FAF	2003 X 150				
4607 X 150	34				
TDZ/CL Rwy 34					
HIRL Rwy 2-20 and 16-34					
REIL Rwy 20					
FAF to MAP 5.6 NM					
Knots	60	90	120	150	180
Min:Sec	5:36	3:44	2:48	2:14	1:52

NE-3, 26 MAR 2020 to 23 APR 2020

NE-3, 26 MAR 2020 to 23 APR 2020